

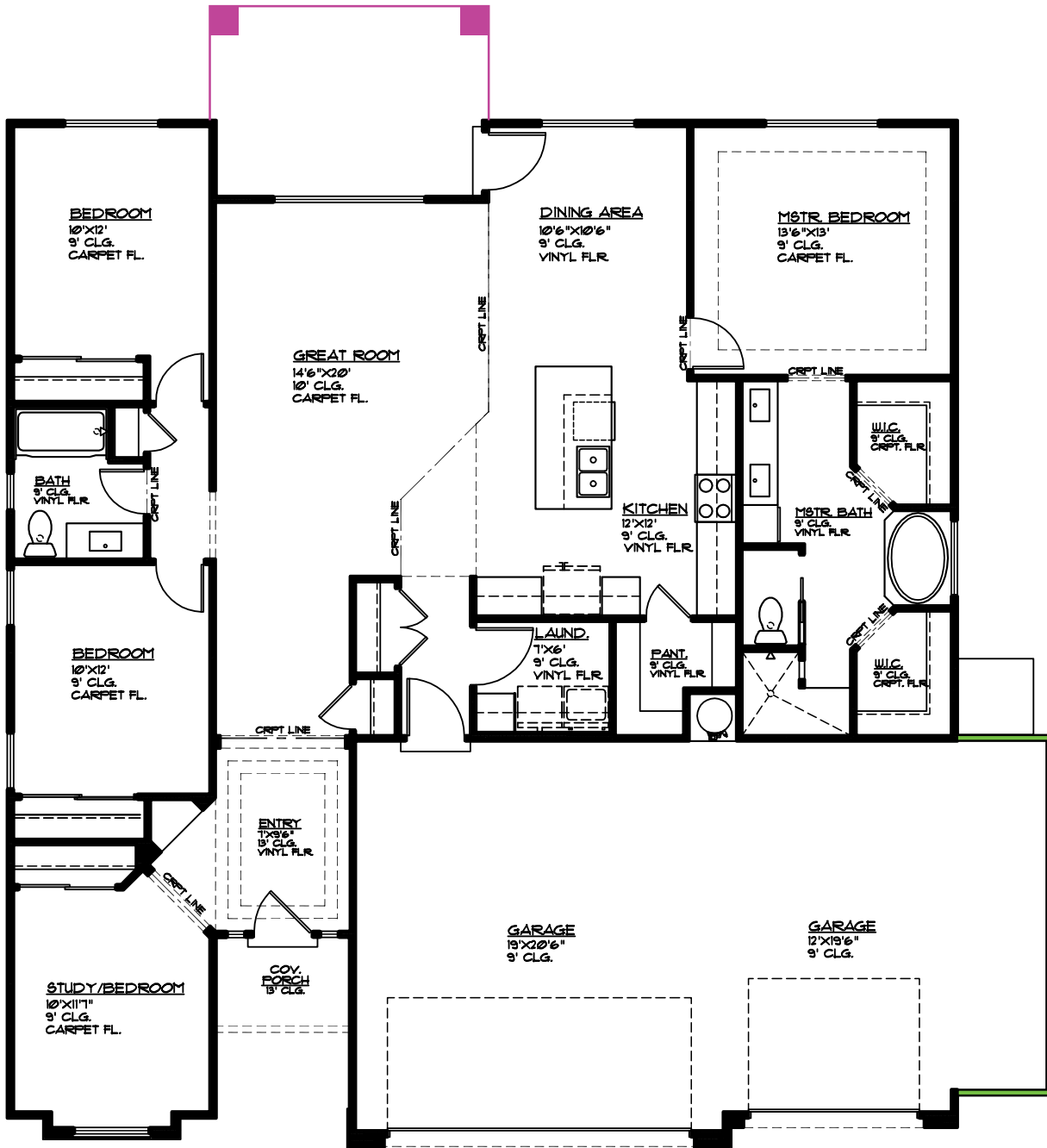


Plan 1872 OPTIONS



3215 E. 3230 S.
St. George, UT
435.652.5236

Don Leavitt 435.669.2022
Merilee Leishman 435.632.4780



- Covered Patio 14'8" x 6', 88 sq. ft.
- 5' Bump-out 5'x19', 95 sq. ft.

MAIN FLOOR PLAN

MAIN FLOOR 1872 SQ. FT.
GARAGE AREA 613 SQ. FT.
COV. PORCH 35 SQ. FT.
COV. PATIO 56 SQ. FT.
GARAGE BUMP-OUT OPT 95 SQ. FT.
COV. PATIO OPT 88 SQ. FT.