

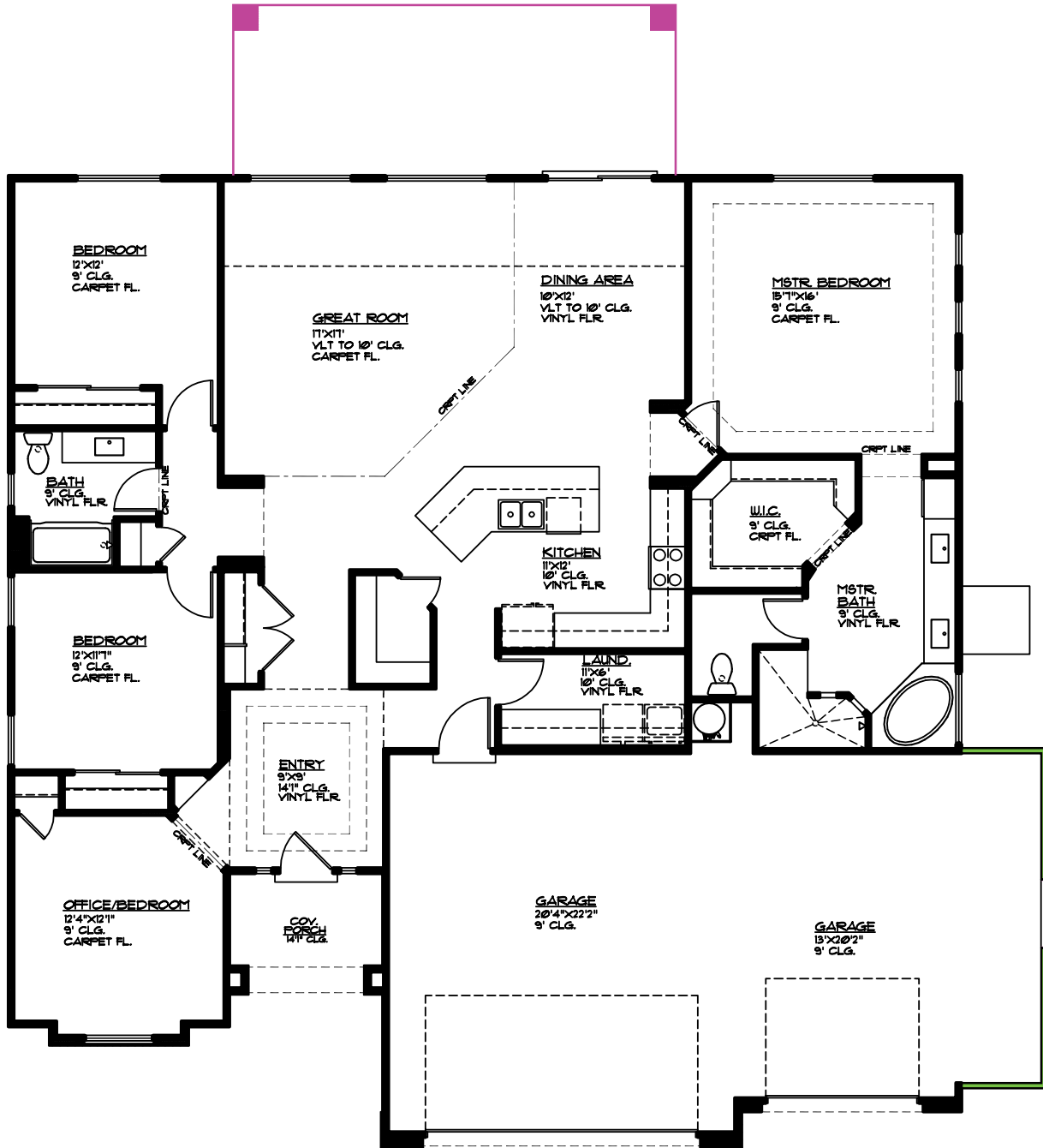


Plan 2165 OPTIONS



3215 E. 3230 S.
St. George, UT
435.652.5236

Don Leavitt 435.669.2022
Merilee Leishman 435.632.4780



- Covered Patio 26' x 10', 260 sq. ft.
- 5' Bump-out 5'x20', 100 sq. ft.

MAIN FLOOR PLAN

MAIN FLOOR = 2165 SQ. FT.
GARAGE AREA = 169 SQ. FT.
COV. PORCH = 63 SQ. FT.
GARAGE BUMP-OUT OPT 100 SQ. FT.
COV. PATIO OPT 260 SQ. FT.