

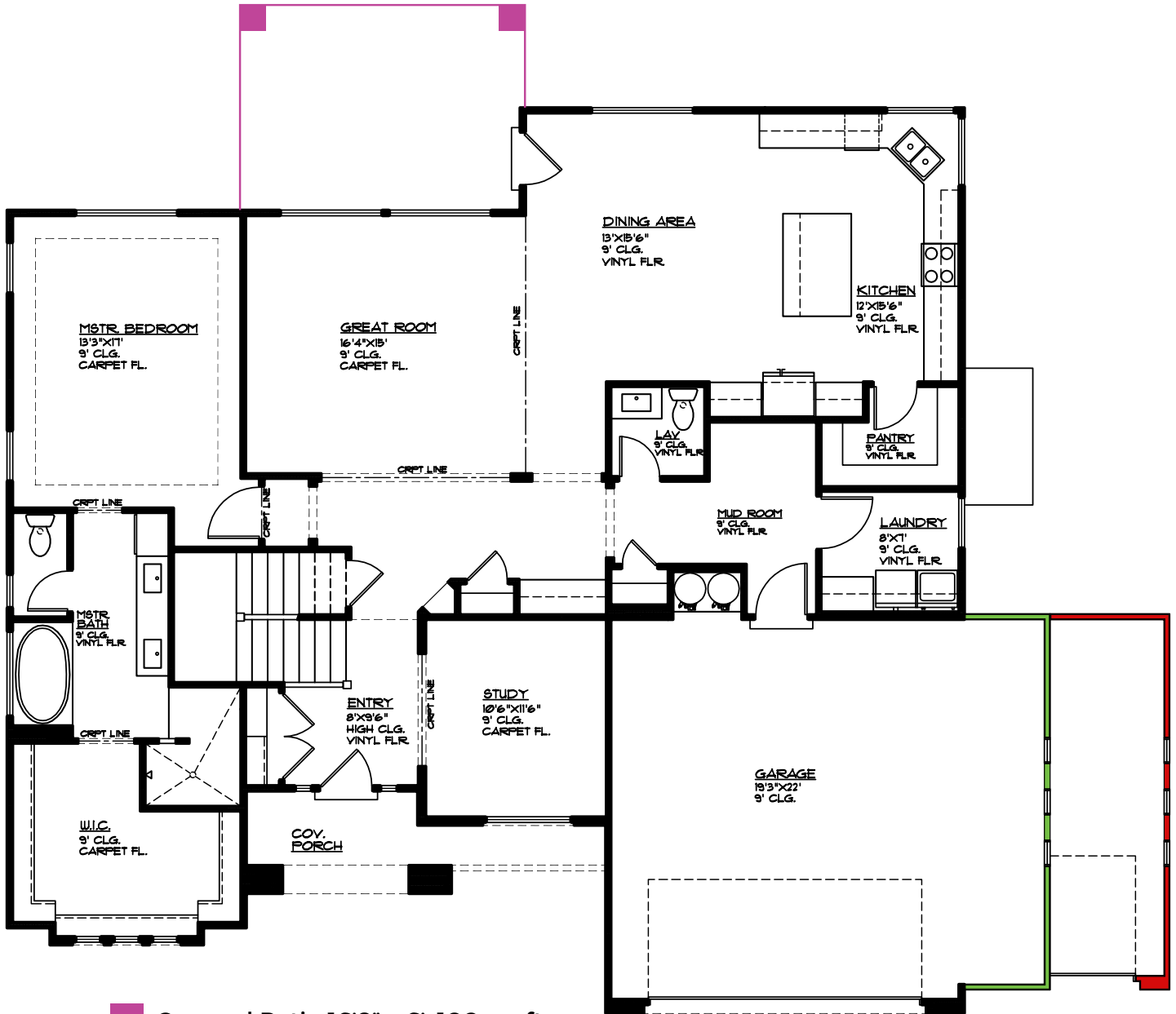


# Plan 3294 OPTIONS



3215 E. 3230 S.  
St. George, UT  
435.652.5236

Don Leavitt 435.669.2022  
Merilee Leishman 435.632.4780



- Covered Patio 16'8" x 6', 100 sq. ft.
- 5' Bump-out 5'x22', 110 sq. ft.
- 3rd Car Garage 12'x22', 264 sq. ft.

## MAIN FLOOR PLAN

MAIN FLOOR - 1916 SQ. FT.  
GARAGE AREA - 411 SQ. FT.  
COV. PORCH - 92 SQ. FT.  
COV. PATIO - 98 SQ. FT.  
GARAGE BUMP-OUT OPT 110 SQ. FT.  
3RD CAR GARAGE OPT 264 SQ. FT.  
COV. PATIO OPT 100 SQ. FT.