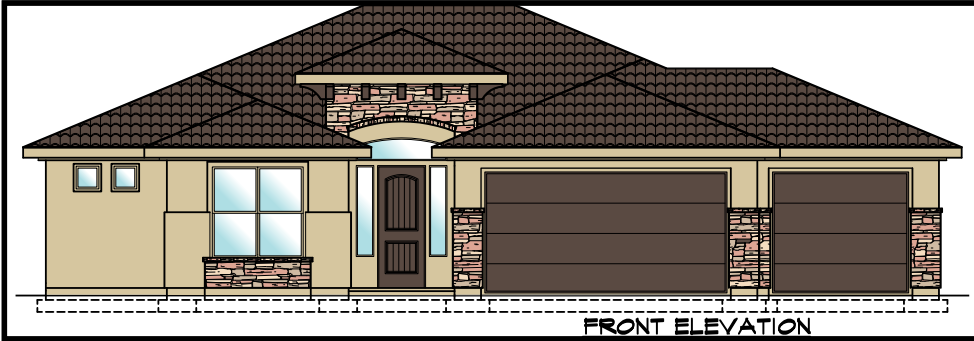




# UNDER CONSTRUCTION MOVE-IN READY



**Lot #68**

## HOMES LOCATED AT:

Riverbend Dr.  
St. George, UT

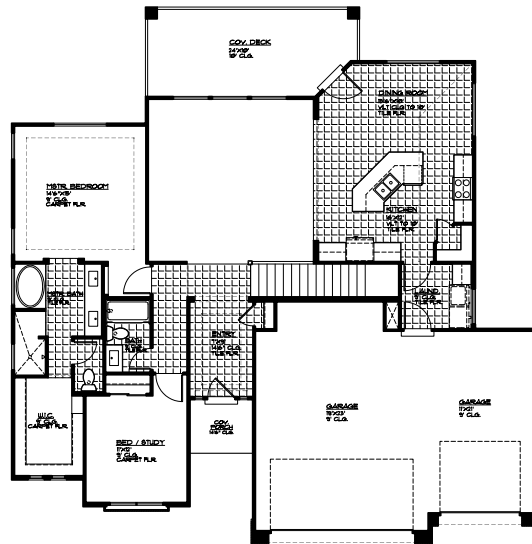
2803 Square Feet  
4 Bed | 3 Bath  
3 Car Garage

## CALL FOR PRICING

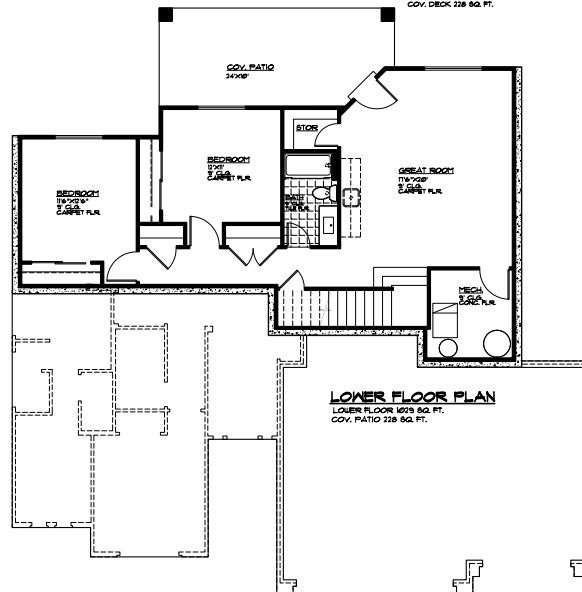
## INCLUDED FEATURES:

- Quartz Countertops
- Full Landscaping
- Tile Backsplash
- Two-Tone Paint
- 8' Tall Doors
- Water Proof Flooring
- Premium Carpet Pad
- Covered Patio

**MLS #**



**MAIN FLOOR PLAN**  
MAIN FLOOR 1714 SQ. FT.  
GARAGE AREA 111 SQ. FT.  
COV. PORCH 42 SQ. FT.  
COV. DECK 228 SQ. FT.



**LOWER FLOOR PLAN**  
LOWER FLOOR 1678 SQ. FT.  
COV. PATIO 238 SQ. FT.

**FOR FURTHER DETAILS CONTACT: 435.216.1707**

MARKETED BY ENCE REALTY - VISIT US TODAY OR GO ONLINE AT: [WWW.ENCEHOMES.COM](http://WWW.ENCEHOMES.COM)