



# Plan 2224 ELEVATIONS



879 N. Sage Crest Dr.  
Washington, UT  
435.652.5238

Shane Calder  
435.760.2009

Tuscan



Modern Prairie



European





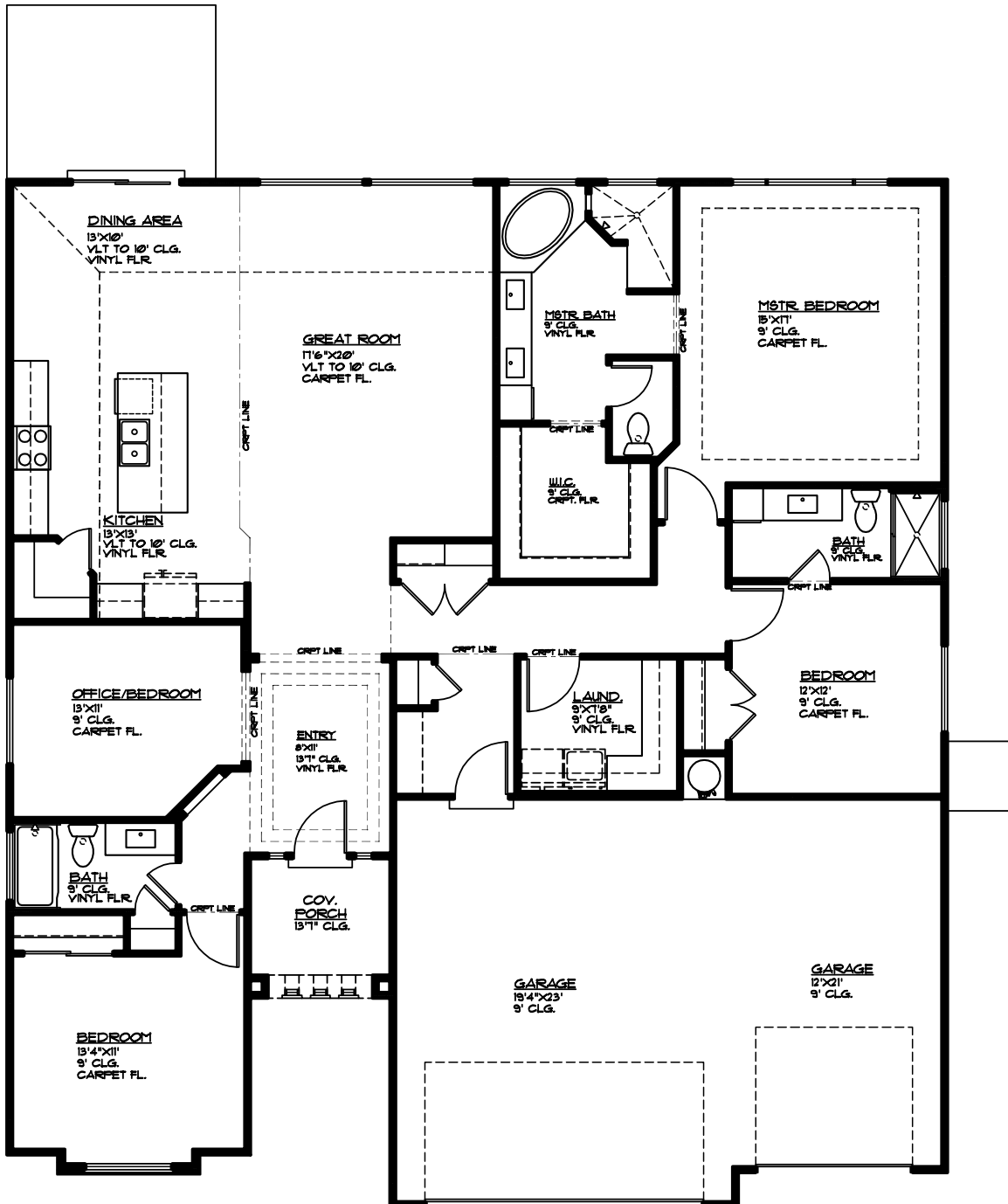
# Plan 2224 FLOOR PLAN



879 N. Sage Crest Dr.  
Washington, UT  
435.652.5238

Shane Calder  
435.760.2009

2,224 Sqft • 4 Beds • 3 Baths • 3 Garages • 54' ► x 59' ▲



### MAIN FLOOR PLAN

MAIN FLOOR - 2224 SQ. FT.  
GARAGE AREA - 130 SQ. FT.  
COV. PORCH - 49 SQ. FT.