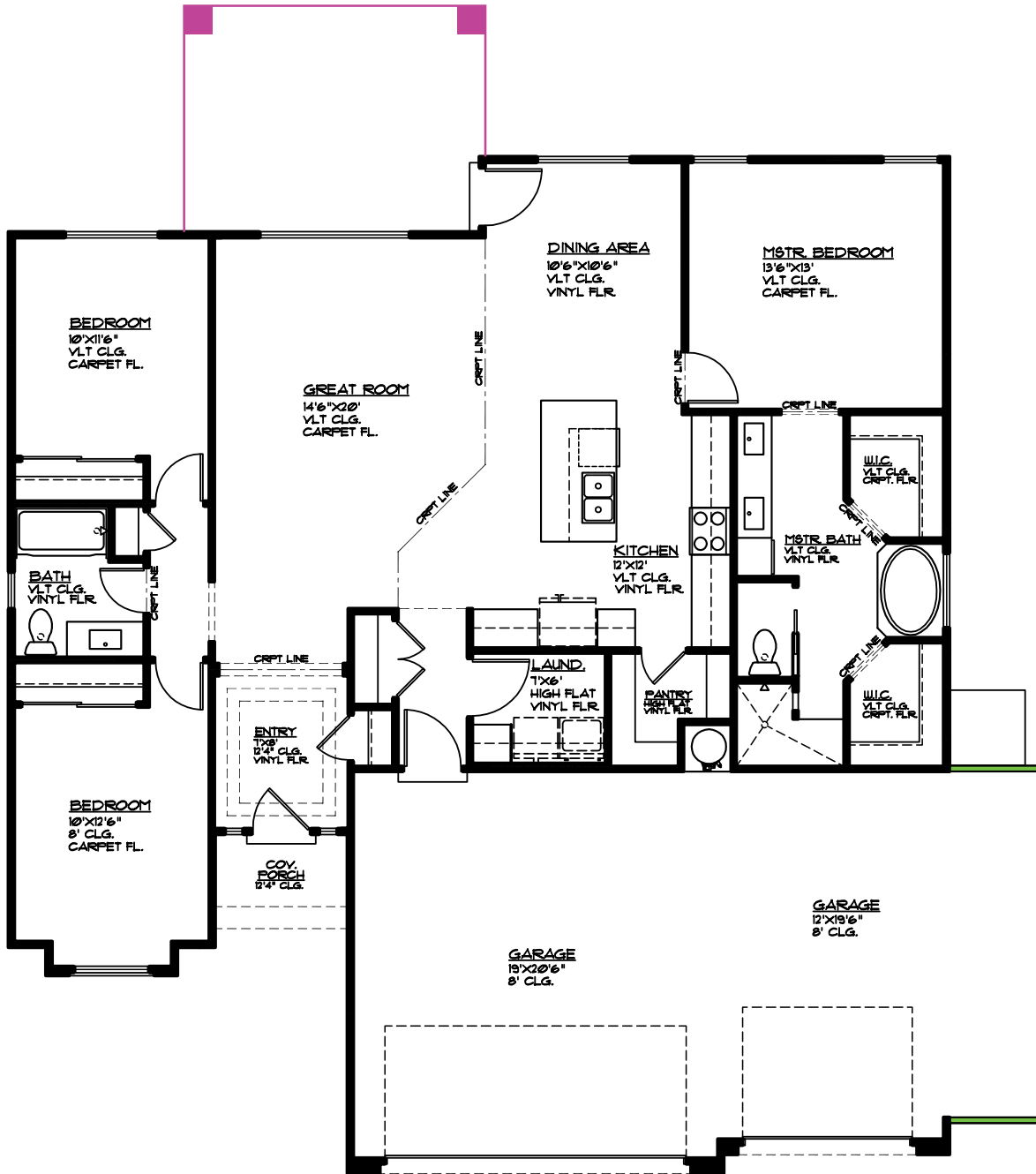




3369 E Crimson Ridge Dr.
St. George, UT
435.652.5515

Blake Bird 435.229.7866
Dan Wiarda 435.590.1260



- Covered Patio 16' x 4'6", 72 sq. ft.
- 5' Bump-out 5'x19', 95 sq. ft.

MAIN FLOOR PLAN

MAIN FLOOR 1660 SQ. FT.
GARAGE AREA 673 SQ. FT.
COV. PORCH 35 SQ. FT.
COV. PATIO 121 SQ. FT.
GARAGE BUMP-OUT OPT 95 SQ. FT.
COV. PATIO 72 SQ. FT.