

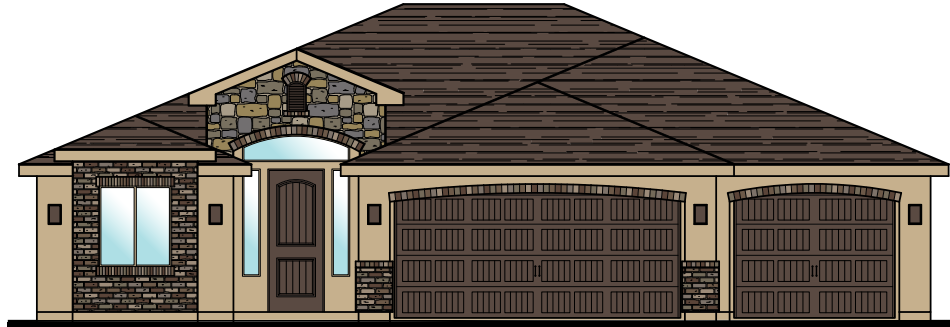


Plan 1660 ELEVATIONS

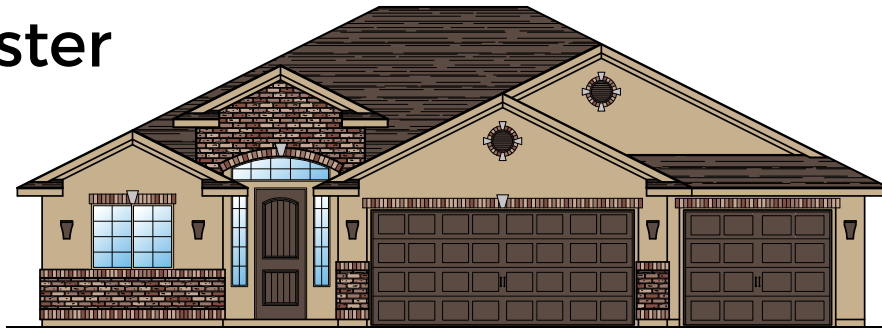


3369 E. Crimson Ridge Dr.
St. George, UT
435.652.5515

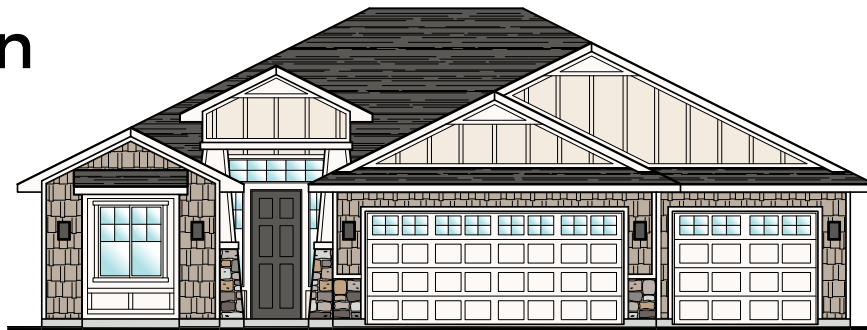
Oxford



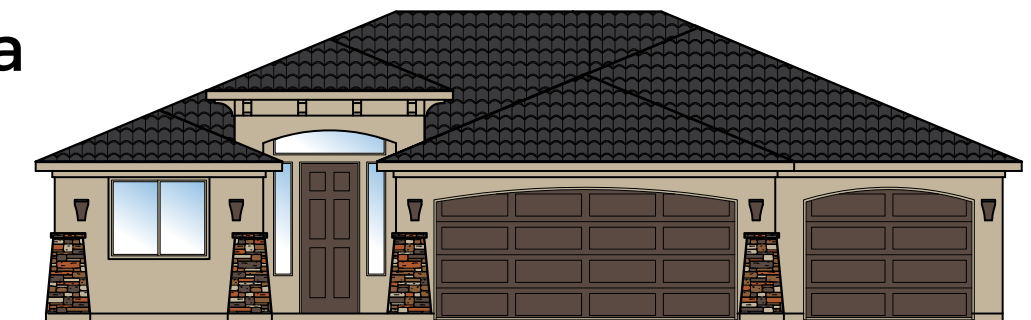
Westminster



Craftsman



Sedona





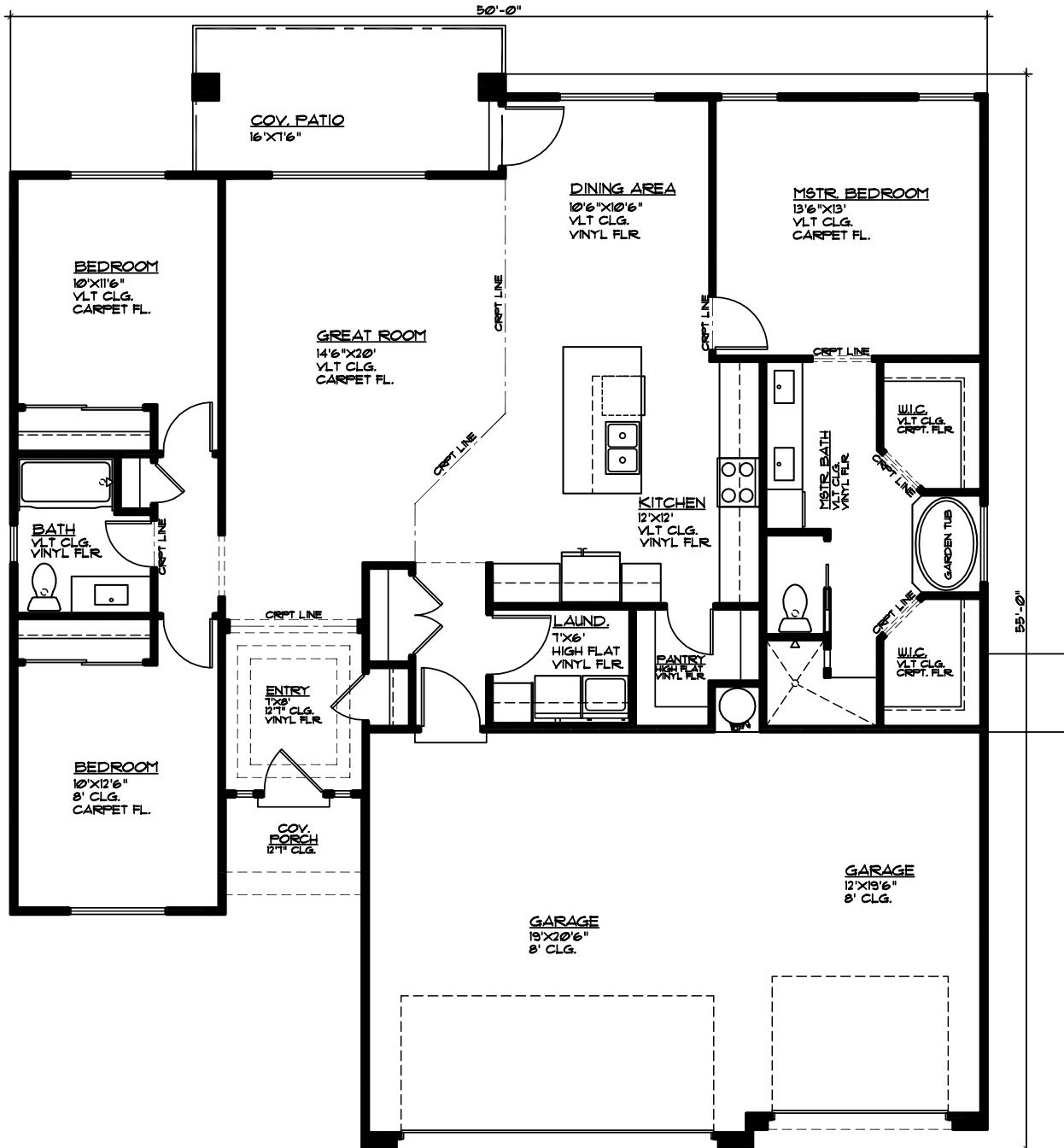
Plan 1660 FLOOR PLAN



Elmwood

3369 E. Crimson Ridge Dr.
St. George, UT
435.652.5515

1,660 Sqft • 3 Beds • 2 Baths • 3 Garages • 50' ▶ x 55' ▲



MAIN FLOOR PLAN

MAIN FLOOR 1660 SQ. FT.
GARAGE AREA 673 SQ. FT.