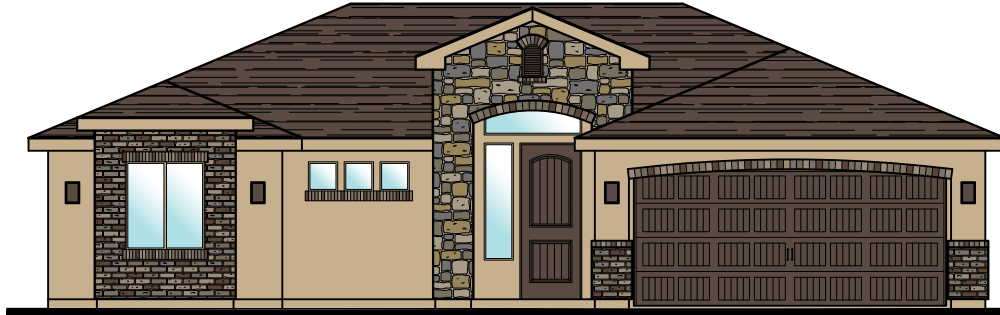




3369 E. Crimson Ridge Dr.
St. George, UT
435.652.5515

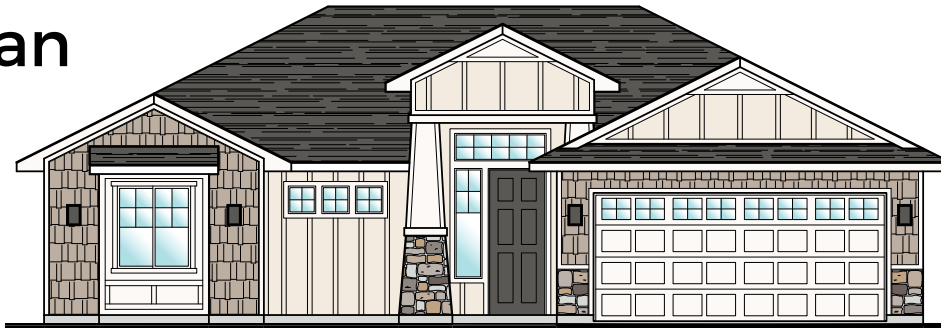
Oxford



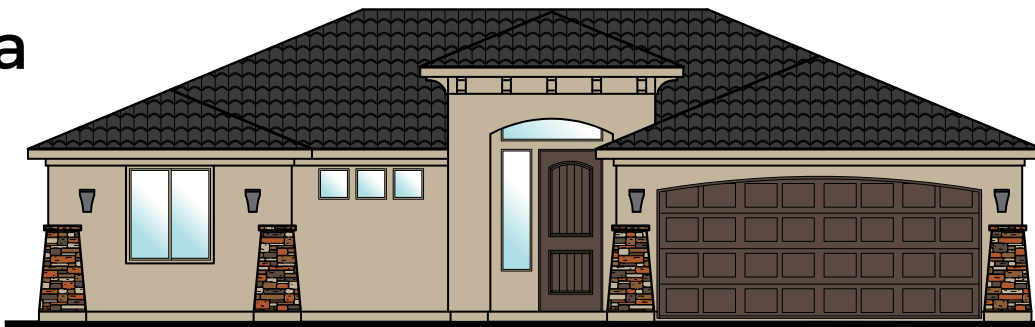
Westminster



Craftsman



Sedona





Plan 1465 FLOOR PLAN



Elmwood

3369 E. Crimson Ridge Dr.
St. George, UT
435.652.5515

1,465 Sqft • 3 Beds • 2 Baths • 2 Garages • 51' ▶ x 48' ▲

