

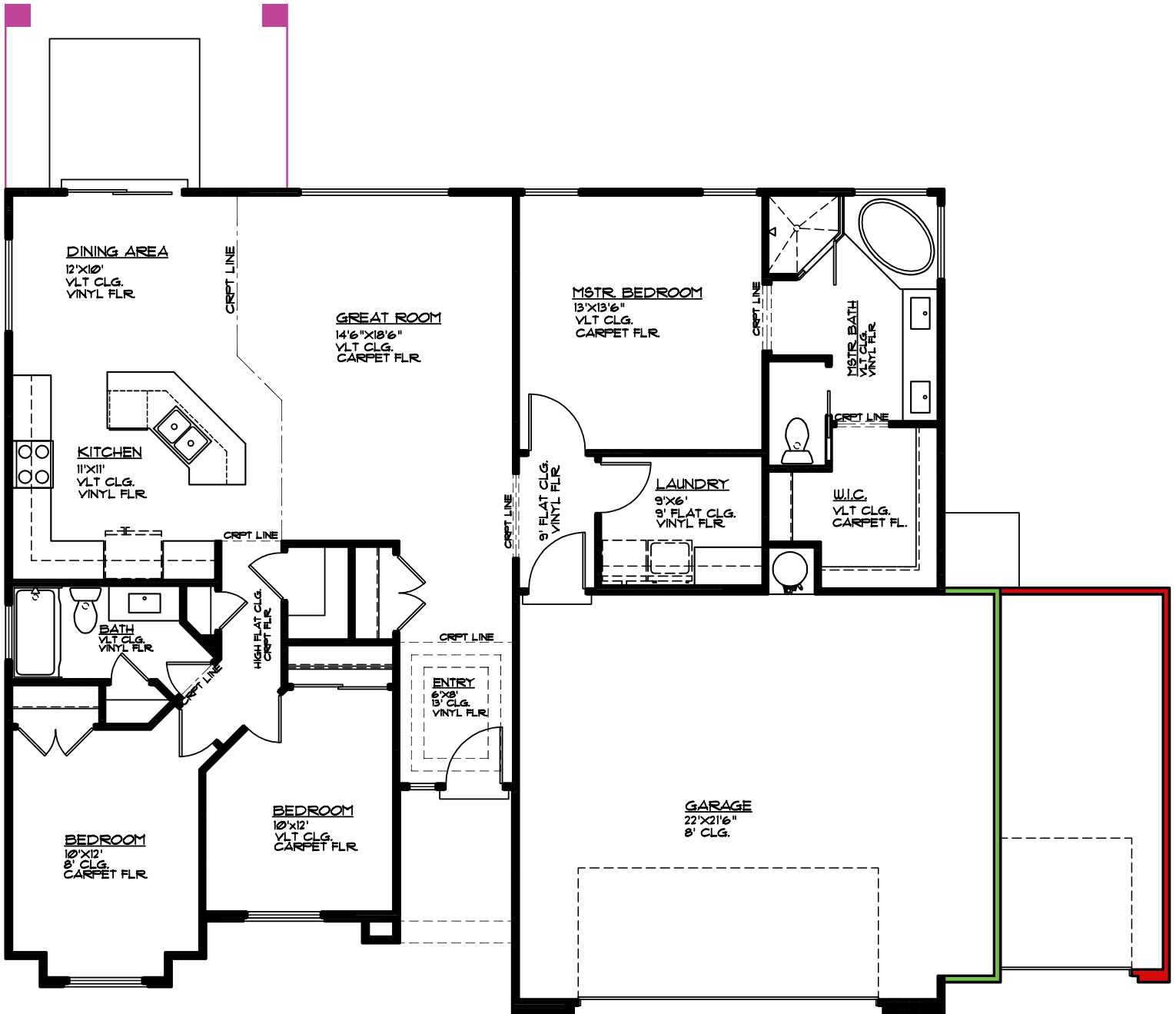


Plan 1528 OPTIONS



3369 E Crimson Ridge Dr.
St. George, UT
435.652.5515

Blake Bird 435.229.7866
Dan Wiarda 435.590.1260



- Covered Patio 15' x 10', 150 sq. ft.
- 3' Bump-out 3'x21', 60 sq. ft.
- 3rd Car Garage 12'x21', 240 sq. ft.

MAIN FLOOR PLAN

MAIN FLOOR 1528 SQ. FT.
GARAGE AREA 494 SQ. FT.
GARAGE BUMP-OUT OPT 60 SQ. FT.
3RD CAR GARAGE OPT 240 SQ. FT.
COV. PATIO 150 SQ. FT.