

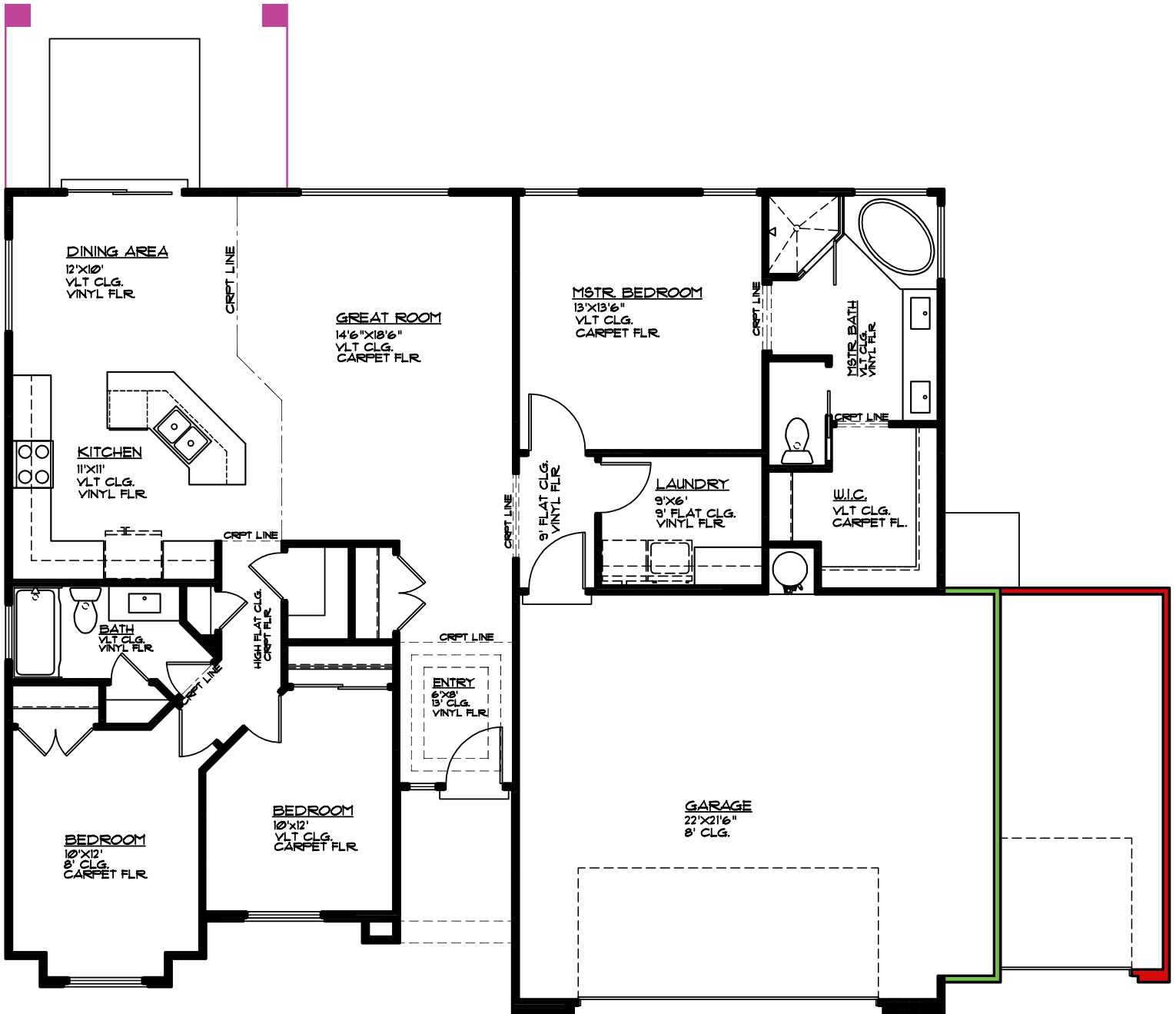


# Plan 1528 OPTIONS



3369 E Crimson Ridge Dr.  
St. George, UT  
435.652.5238

Blake Bird 435.229.7866  
Dan Wiarda 435.590.1260



- Covered Patio 15' x 10', 150 sq. ft.
- 3' Bump-out 3'x21', 60 sq. ft.
- 3rd Car Garage 12'x21', 240 sq. ft.

## MAIN FLOOR PLAN

MAIN FLOOR 1528 SQ. FT.  
GARAGE AREA 494 SQ. FT.  
GARAGE BUMP-OUT OPT 60 SQ. FT.  
3RD CAR GARAGE OPT 240 SQ. FT.  
COV. PATIO 150 SQ. FT.