



Plan 1528 ELEVATIONS



3369 E. Crimson Ridge Dr.
St. George, UT
435.652.5515

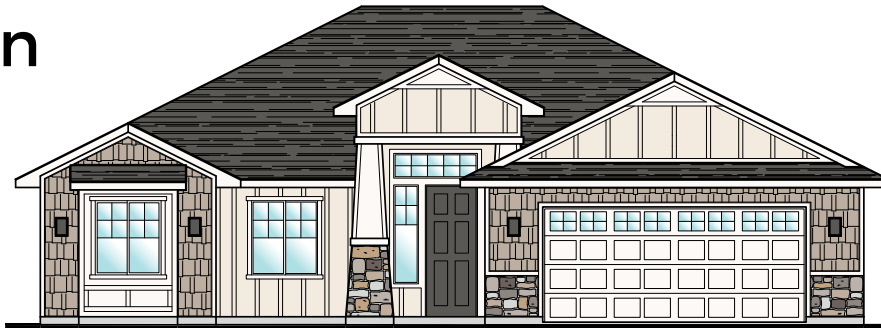
Oxford



Westminster



Craftsman



Sedona





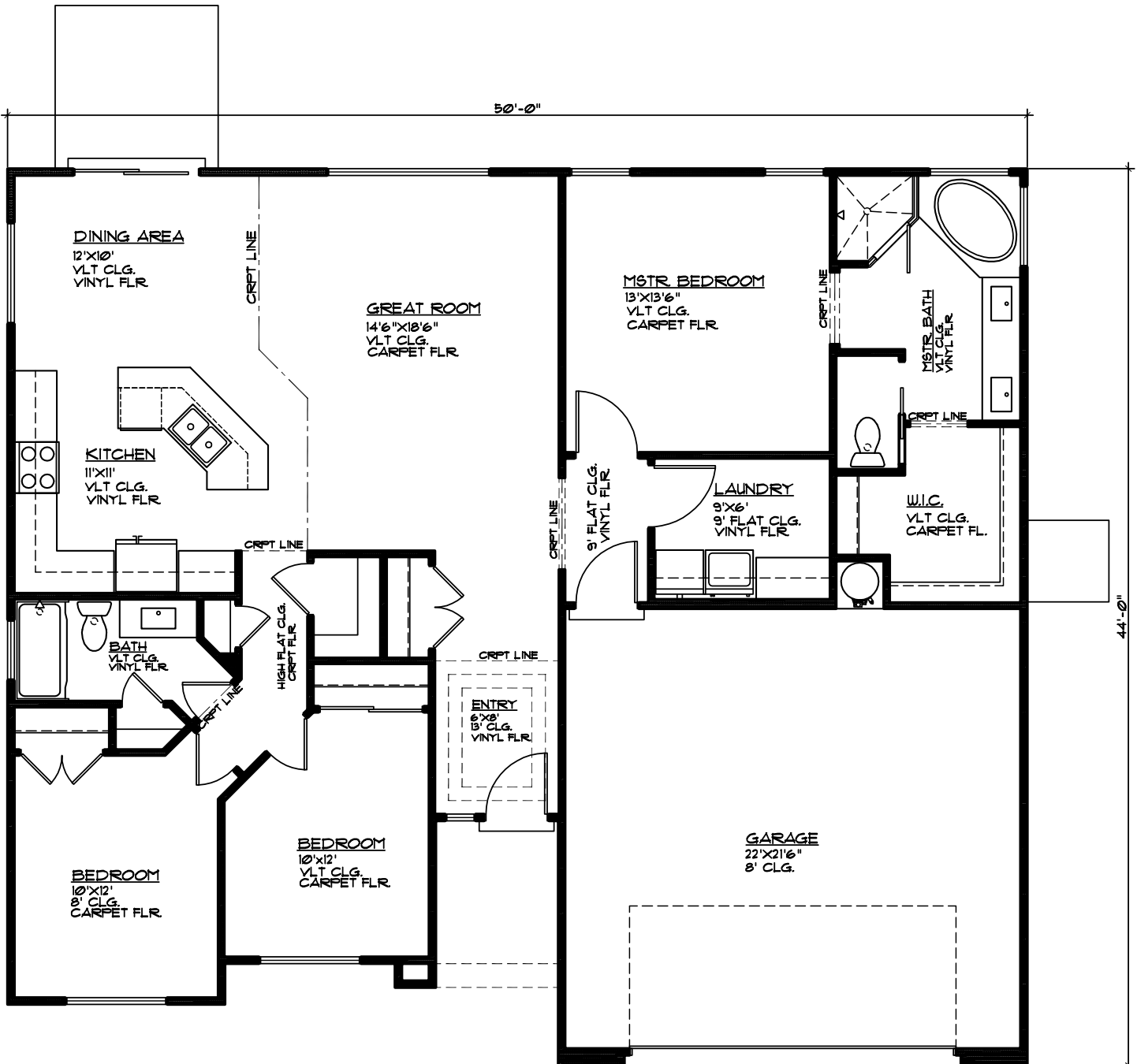
Plan 1528 FLOOR PLAN



Elmwood

3369 E. Crimson Ridge Dr.
St. George, UT
435.652.5515

1,528 Sqft • 3 Beds • 2 Baths • 2 Garages • 50' ► x 44' ▲



MAIN FLOOR PLAN

MAIN FLOOR 1528 SQ. FT.
GARAGE AREA 494 SQ. FT.