

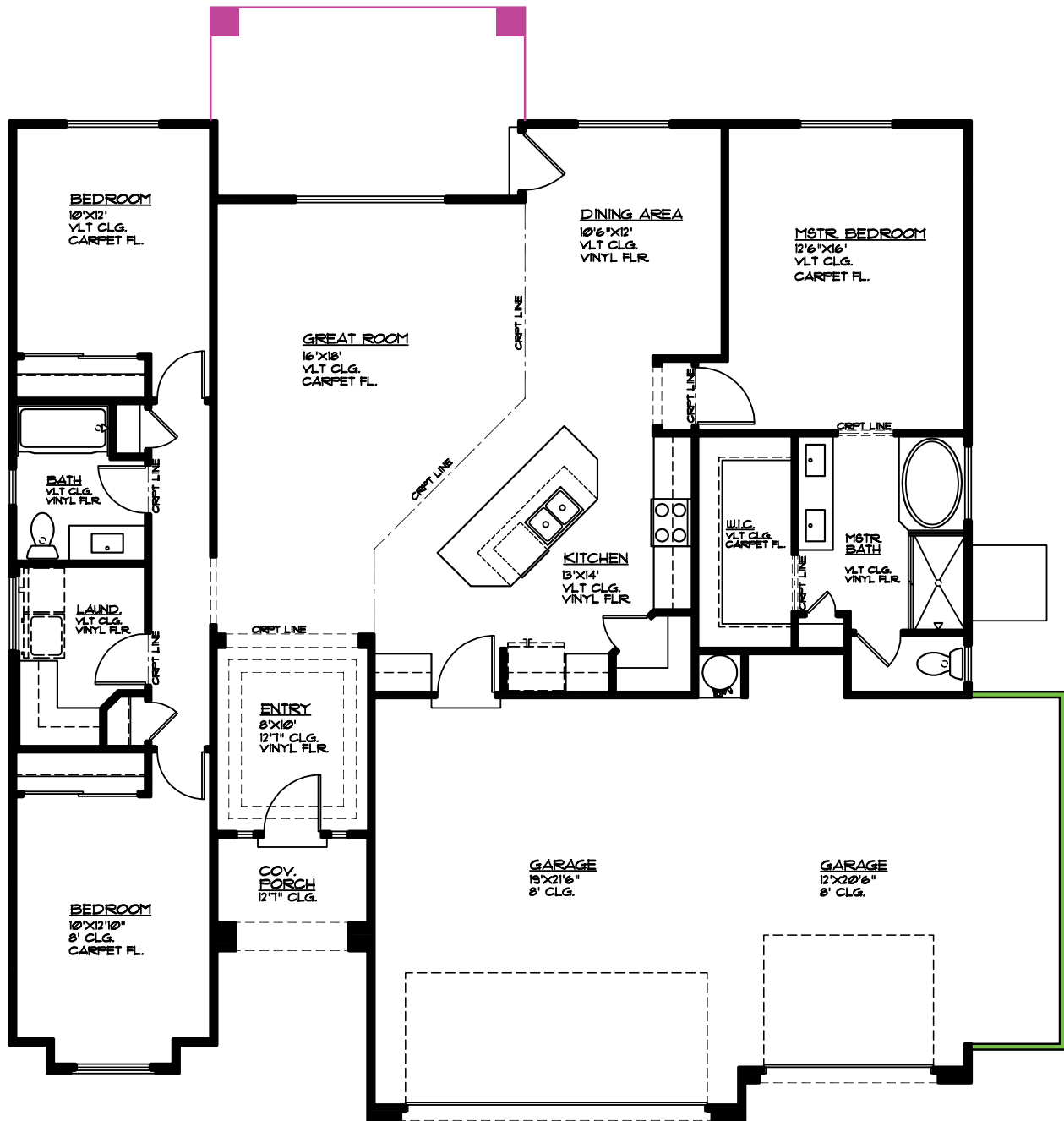


Plan 1742 OPTIONS



3369 E Crimson Ridge Dr.
St. George, UT
435.652.5515

Blake Bird 435.229.7866
Dan Wiarda 435.590.1260



- Covered Patio 16'8" x 6', 100 sq. ft.
- 5' Bump-out 5'x19', 95 sq. ft.

MAIN FLOOR PLAN

MAIN FLOOR - 1742 SQ. FT.
GARAGE AREA - 710 SQ. FT.
COV. PORCH 48 SQ. FT.
COV. PATIO 64 SQ. FT.
GARAGE BUMP-OUT OPT 95 SQ. FT.