



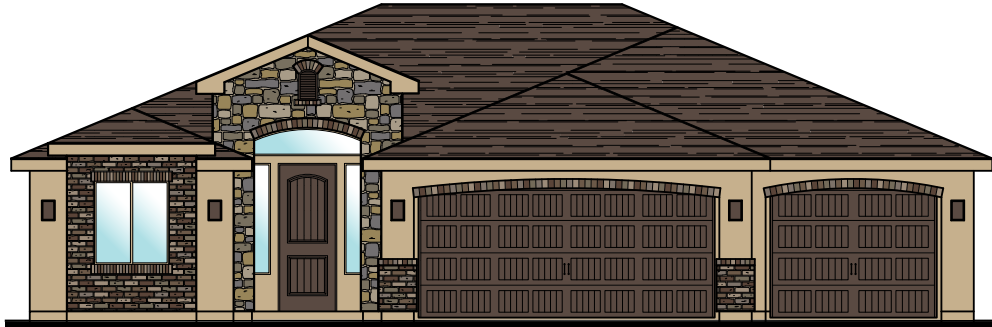
# Plan 1742 ELEVATIONS



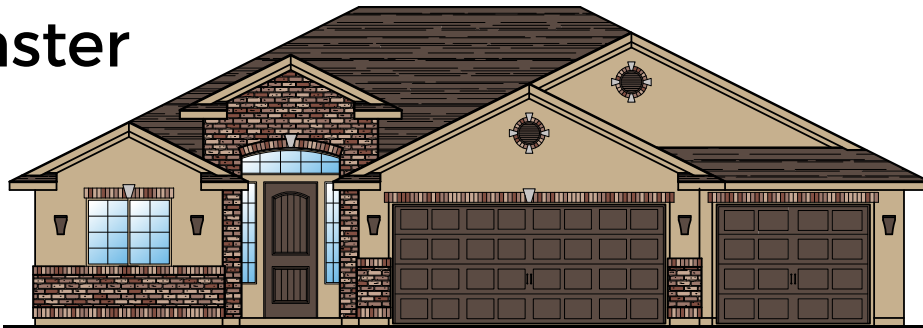
Elmwood

3369 E. Crimson Ridge Dr.  
St. George, UT  
435.652.5515

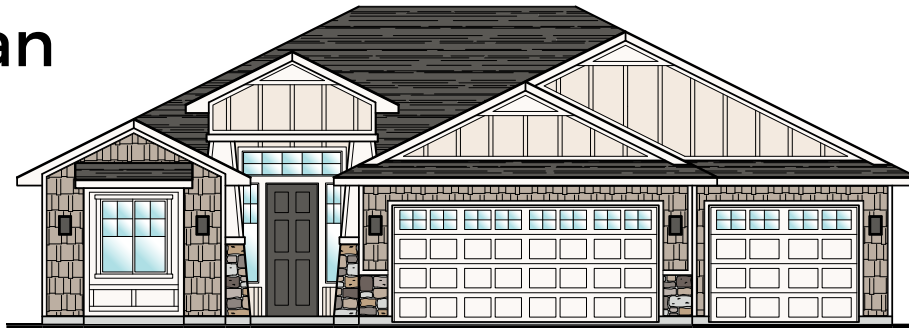
## Oxford



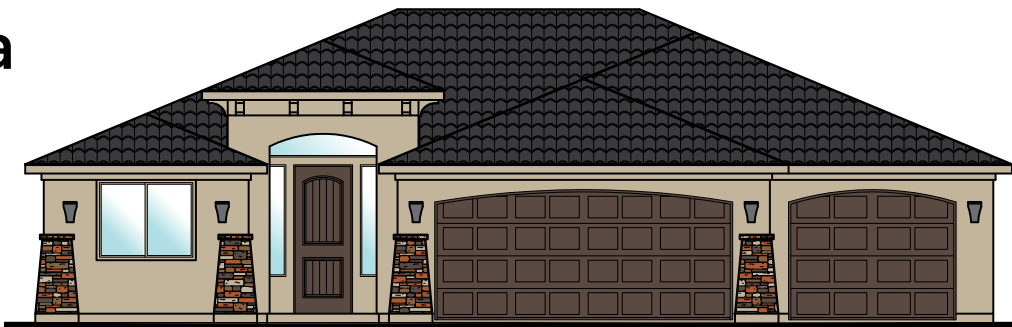
## Westminster



## Craftsman



## Sedona





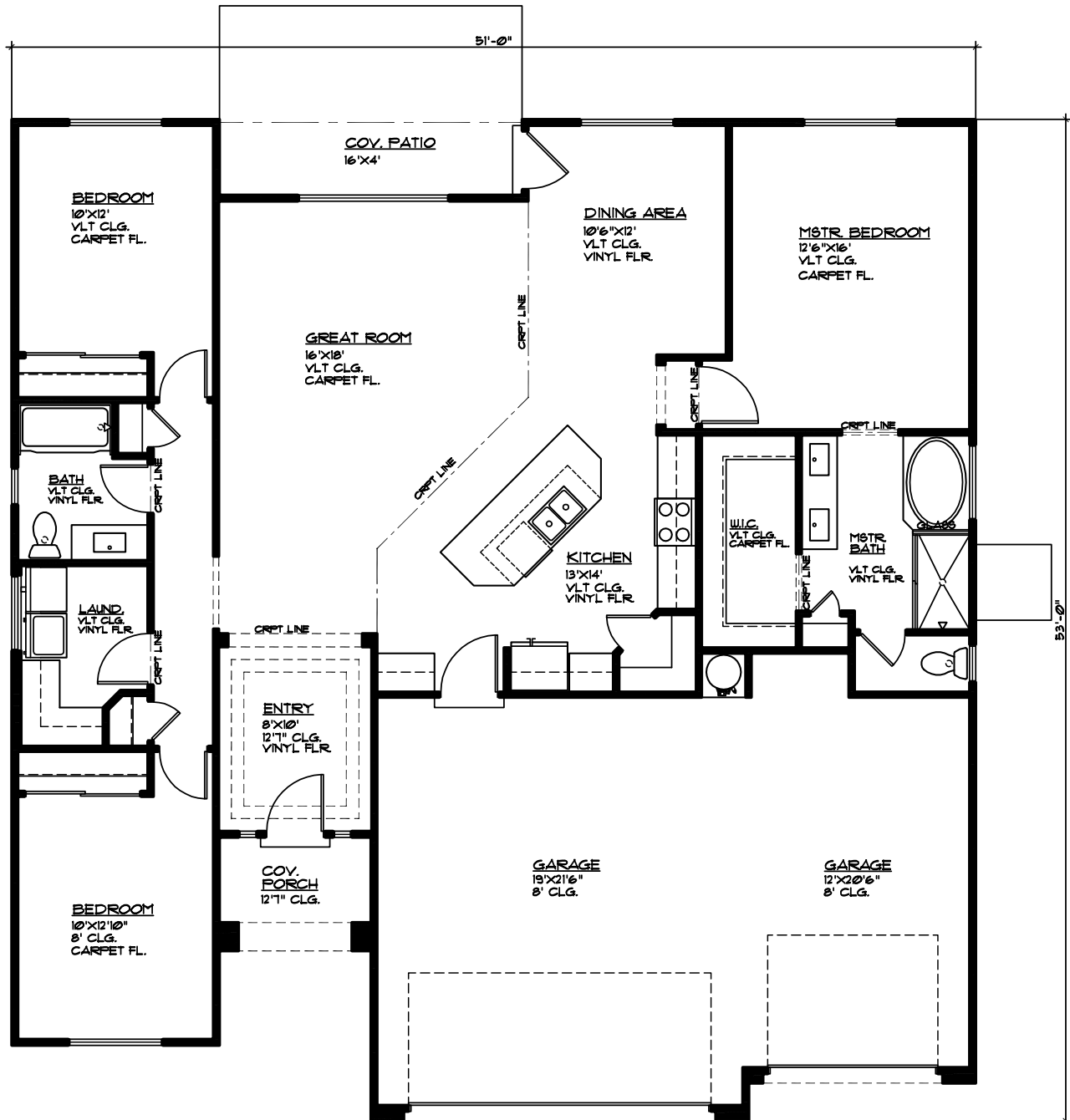
# Plan 1742 FLOOR PLAN



Elmwood

3369 E. Crimson Ridge Dr.  
St. George, UT  
435.652.5515

1,742 Sqft • 3 Beds • 2 Baths • 3 Garages • 51' ► x 53' ▲



## MAIN FLOOR PLAN

MAIN FLOOR - 1742 SQ. FT.  
GARAGE AREA - 710 SQ. FT.