



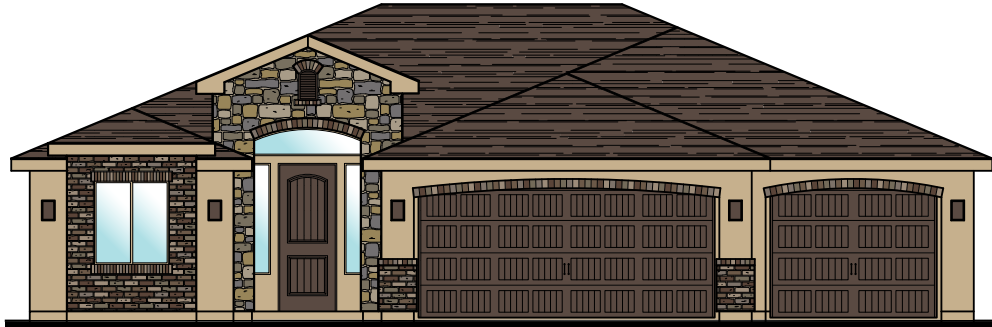
Plan 1742 ELEVATIONS



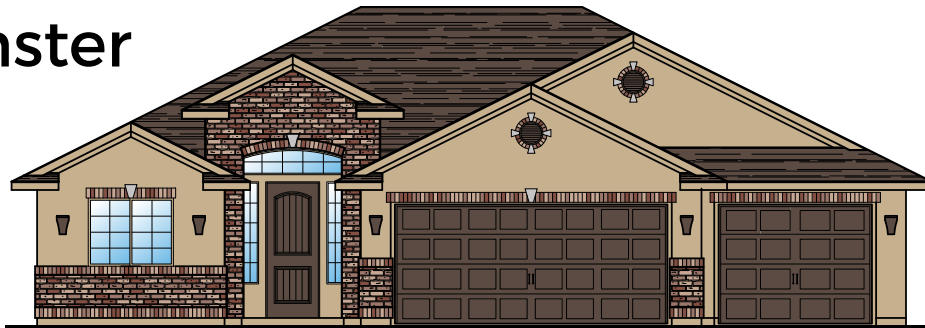
3369 E. Crimson Ridge Dr.,
St. George
435.652.5515

Blake Bird 435.229.7866
Dan Wiarda 435.590.1260

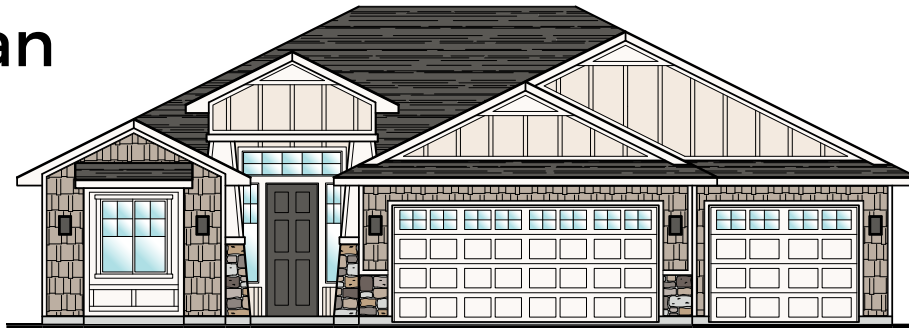
Oxford



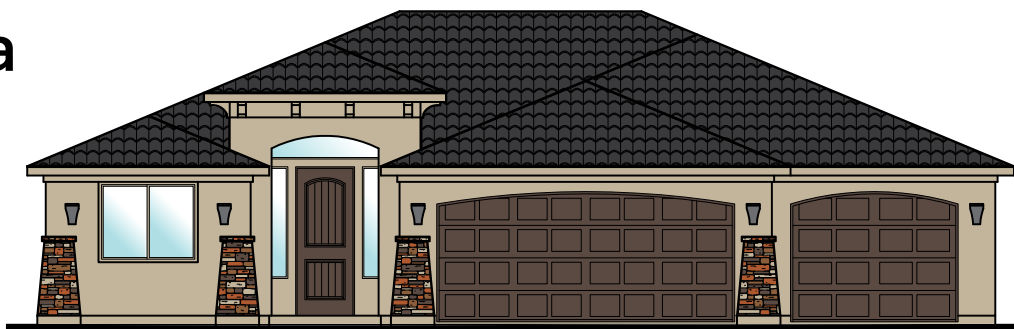
Westminster



Craftsman



Sedona





Plan 1742 FLOOR PLAN

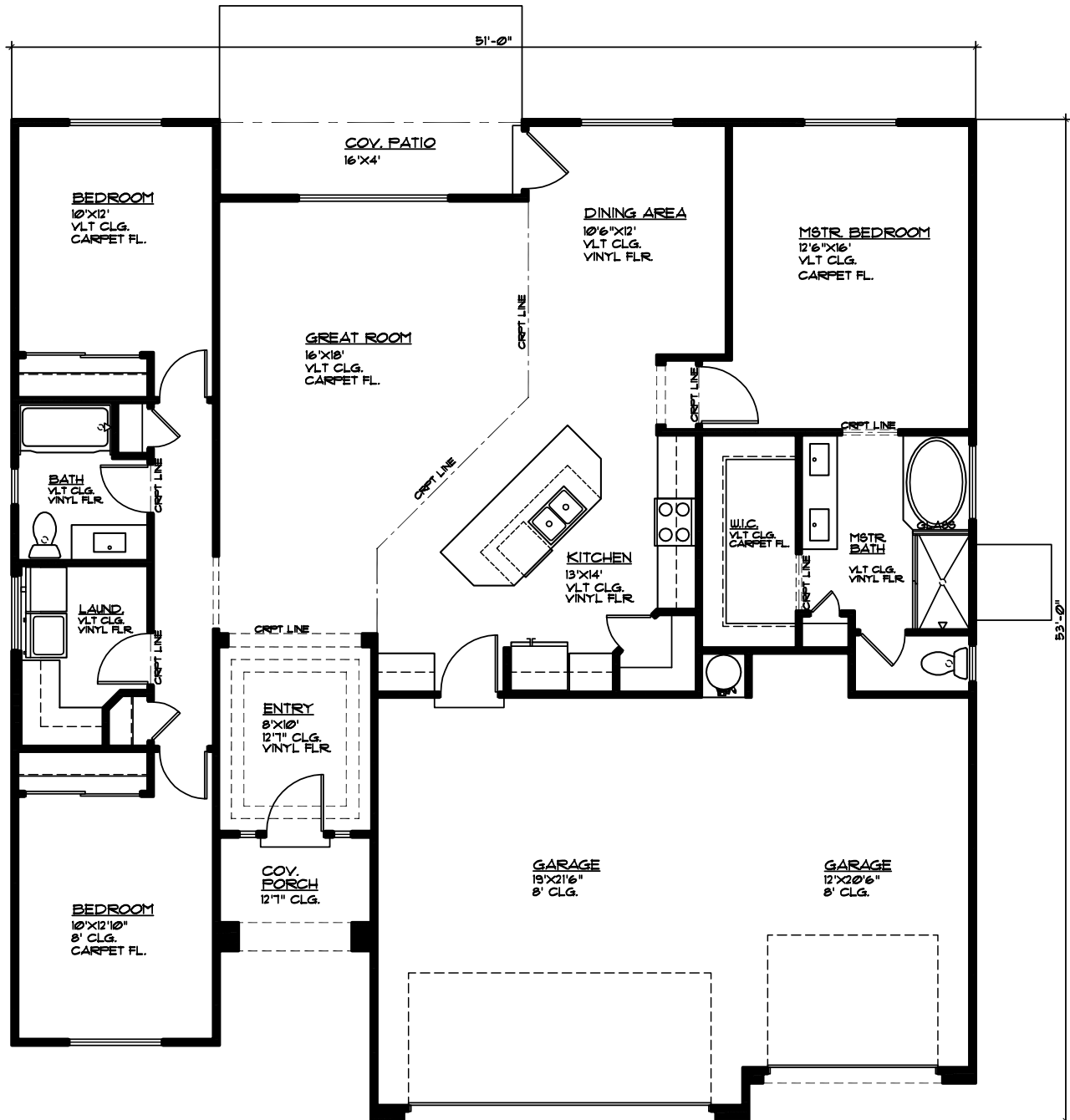


Elmwood

3369 E. Crimson Ridge
Dr., St. George
435.652.5515

Blake Bird 435.229.7866
Dan Wiarda 435.590.1260

1,742 Sqft • 3 Beds • 2 Baths • 3 Garages • 51' ► x 53' ▲



MAIN FLOOR PLAN

MAIN FLOOR - 1742 SQ. FT.
GARAGE AREA - 710 SQ. FT.