

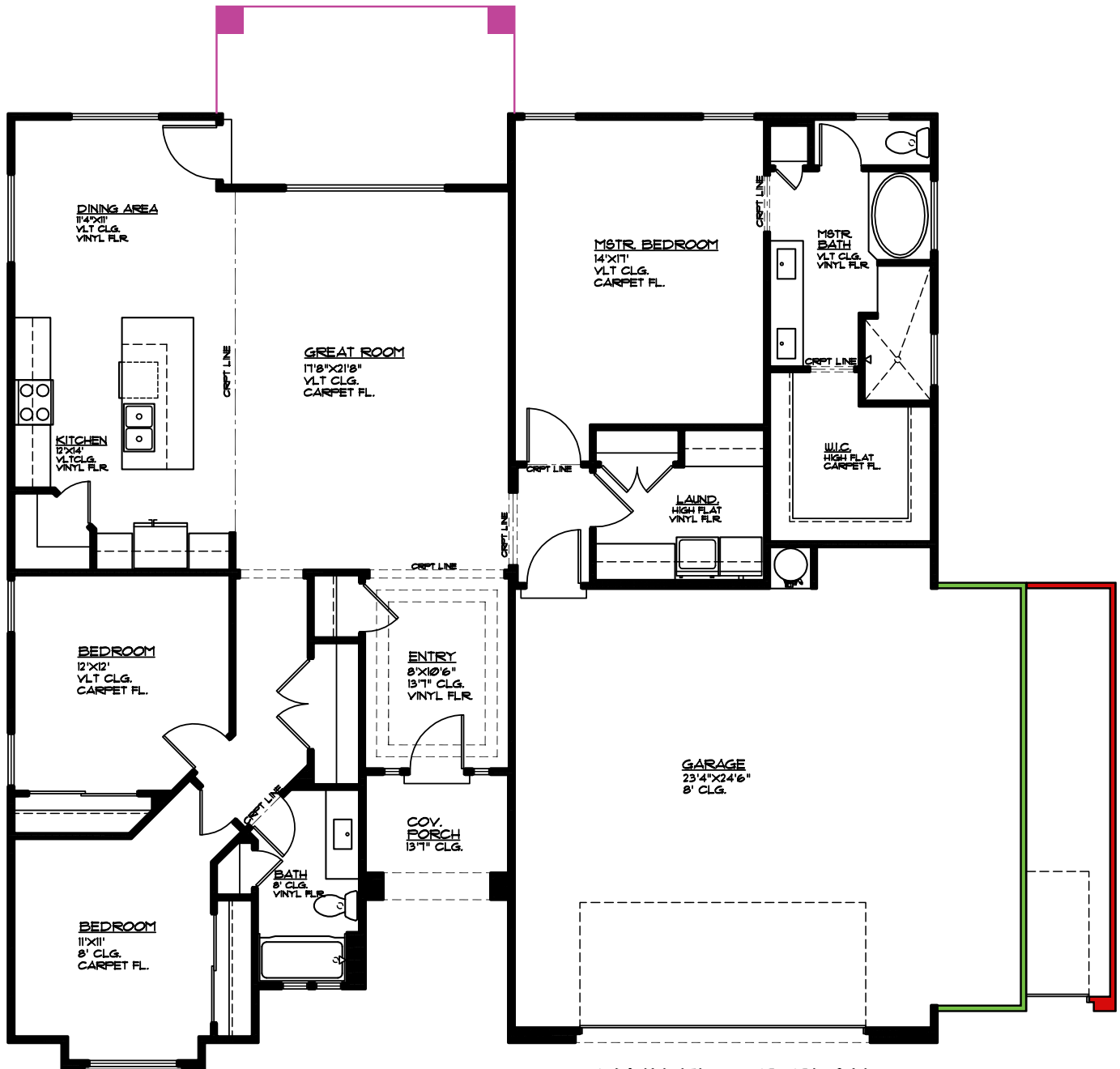


Plan 1862 OPTIONS



3369 E Crimson Ridge Dr.
St. George, UT
435.652.5515

Blake Bird 435.229.7866
Dan Wiarda 435.590.1260



- Covered Patio 16'8" x 6', 100 sq. ft.
- 5' Bump-out 5'x24', 120 sq. ft.
- 3rd Car Garage 12'x24', 240 sq. ft.

MAIN FLOOR PLAN

MAIN FLOOR = 1862 SQ. FT.
GARAGE AREA = 640 SQ. FT.
GARAGE BUMP-OUT OPT 120 SQ. FT.
3RD CAR GARAGE OPT 240 SQ. FT.
COV. PATIO 100 SQ. FT.