



Plan 1862 ELEVATIONS



3369 E. Crimson Ridge Dr.
St. George, UT
435.652.5515

Oxford



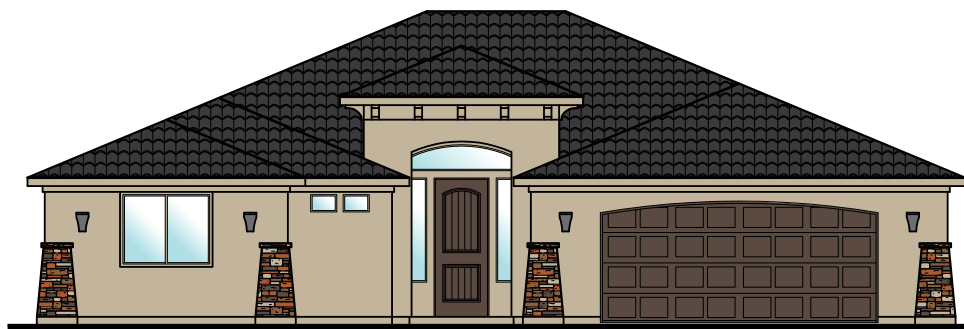
Westminster



Craftsman



Sedona





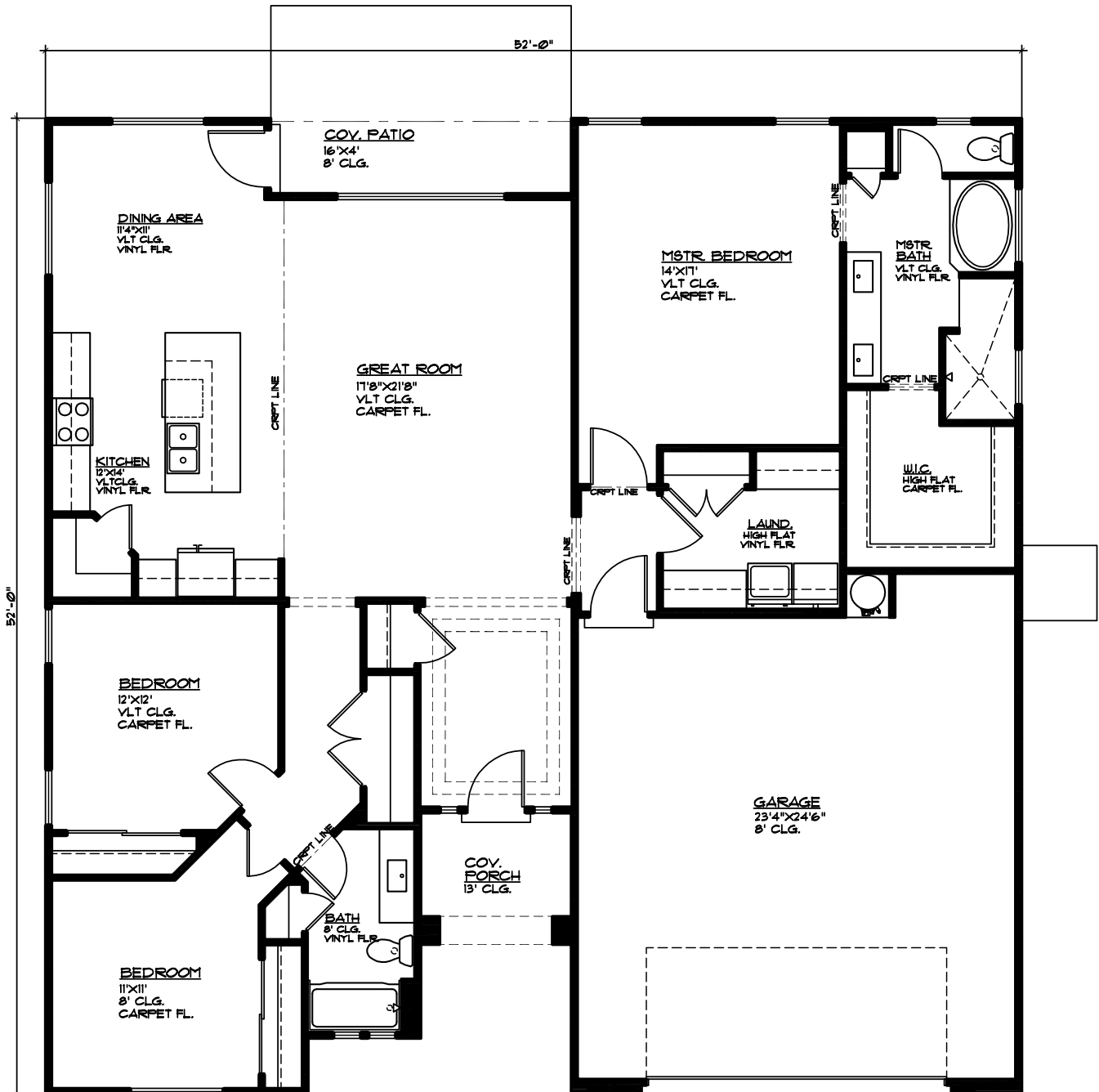
Plan 1862 FLOOR PLAN



Elmwood

3369 E. Crimson Ridge Dr.
St. George, UT
435.652.5515

1,862 Sqft • 3 Beds • 2 Baths • 2 Garages • 52' ► x 52' ▲



MAIN FLOOR PLAN

MAIN FLOOR = 1862 SQ. FT.

GARAGE AREA = 640 SQ. FT.