

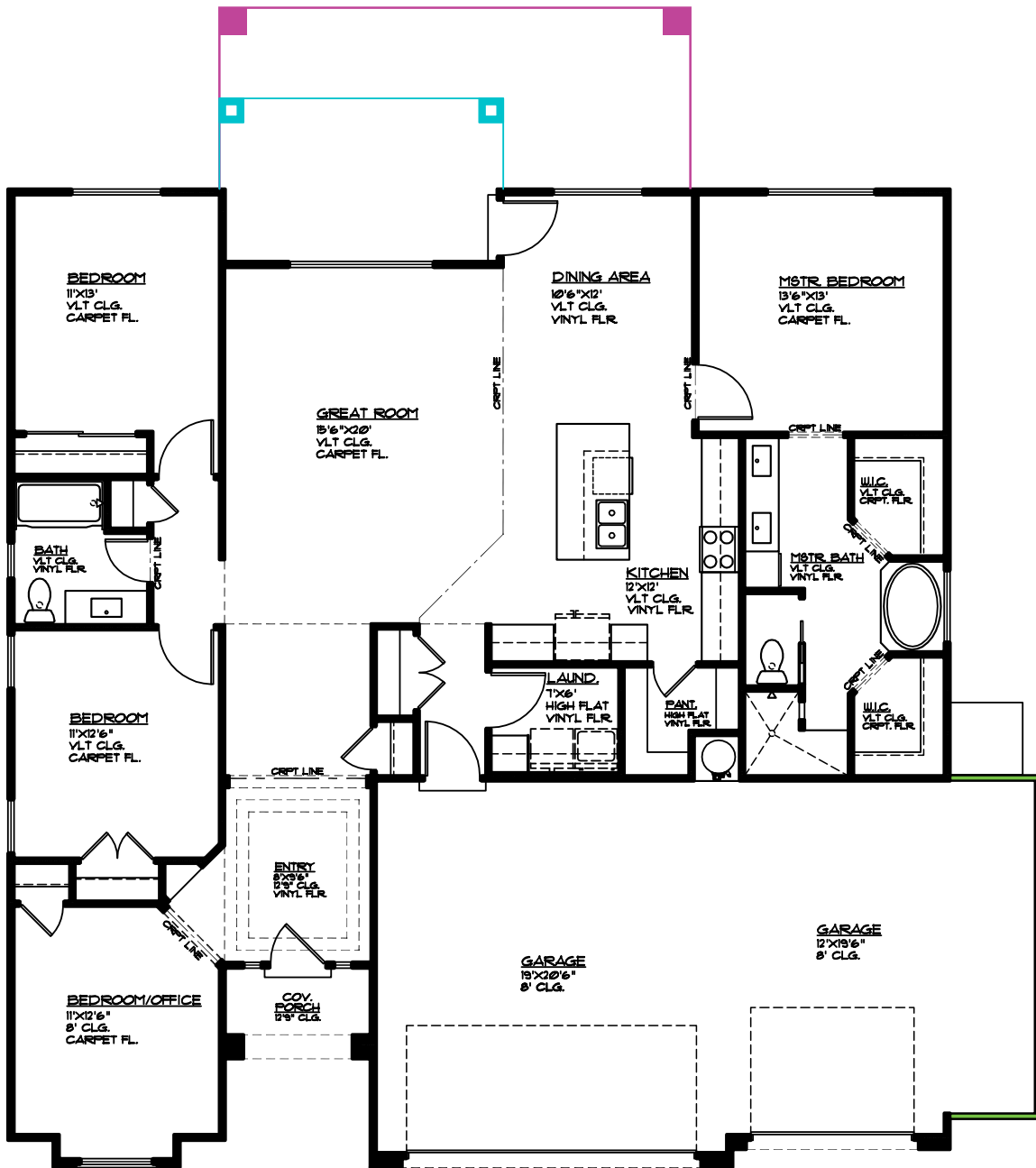


# Plan 1958 OPTIONS



3369 E Crimson Ridge Dr.  
St. George, UT  
435.652.5515

Blake Bird 435.229.7866  
Dan Wiarda 435.590.1260



- Covered Patio 15'8" x 5', 78 sq. ft.
- Covered Patio 26' x 10', 270 sq. ft.
- 5' Bump-out 5'x19', 110 sq. ft.

**MAIN FLOOR PLAN**  
 MAIN FLOOR 1958 SQ. FT.  
 GARAGE AREA 673 SQ. FT.  
 COV. PORCH 40 SQ. FT.  
 COV. PATIO 101 SQ. FT.  
 GARAGE BUMP-OUT OPT 95 SQ. FT.  
 COV. PATIO OPT 178 SQ. FT.  
 COV. PATIO OPT 2 260 SQ. FT.