

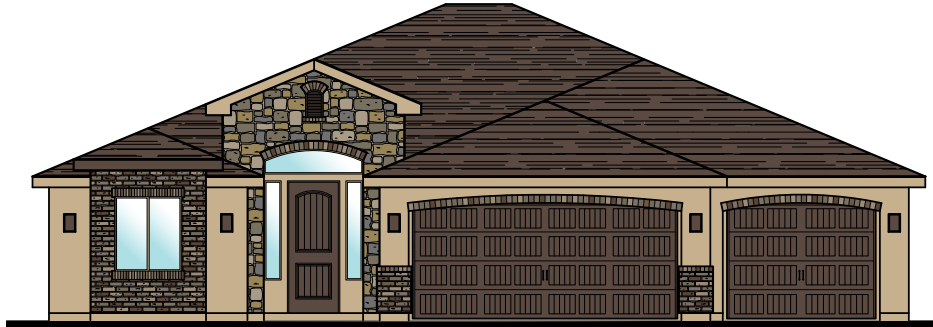


Plan 1958 ELEVATIONS



3369 E. Crimson Ridge Dr.
St. George, UT
435.652.5515

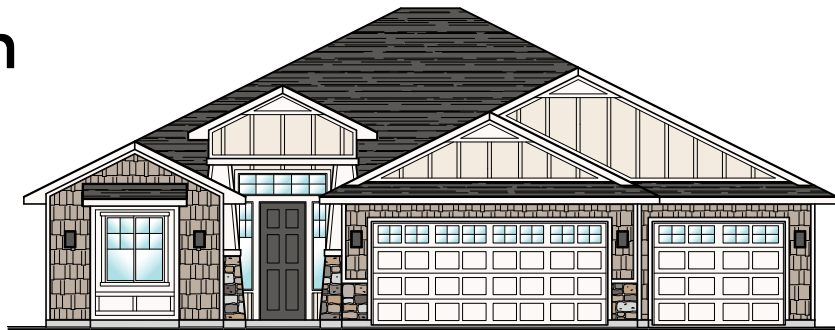
Oxford



Westminster



Craftsman



Sedona





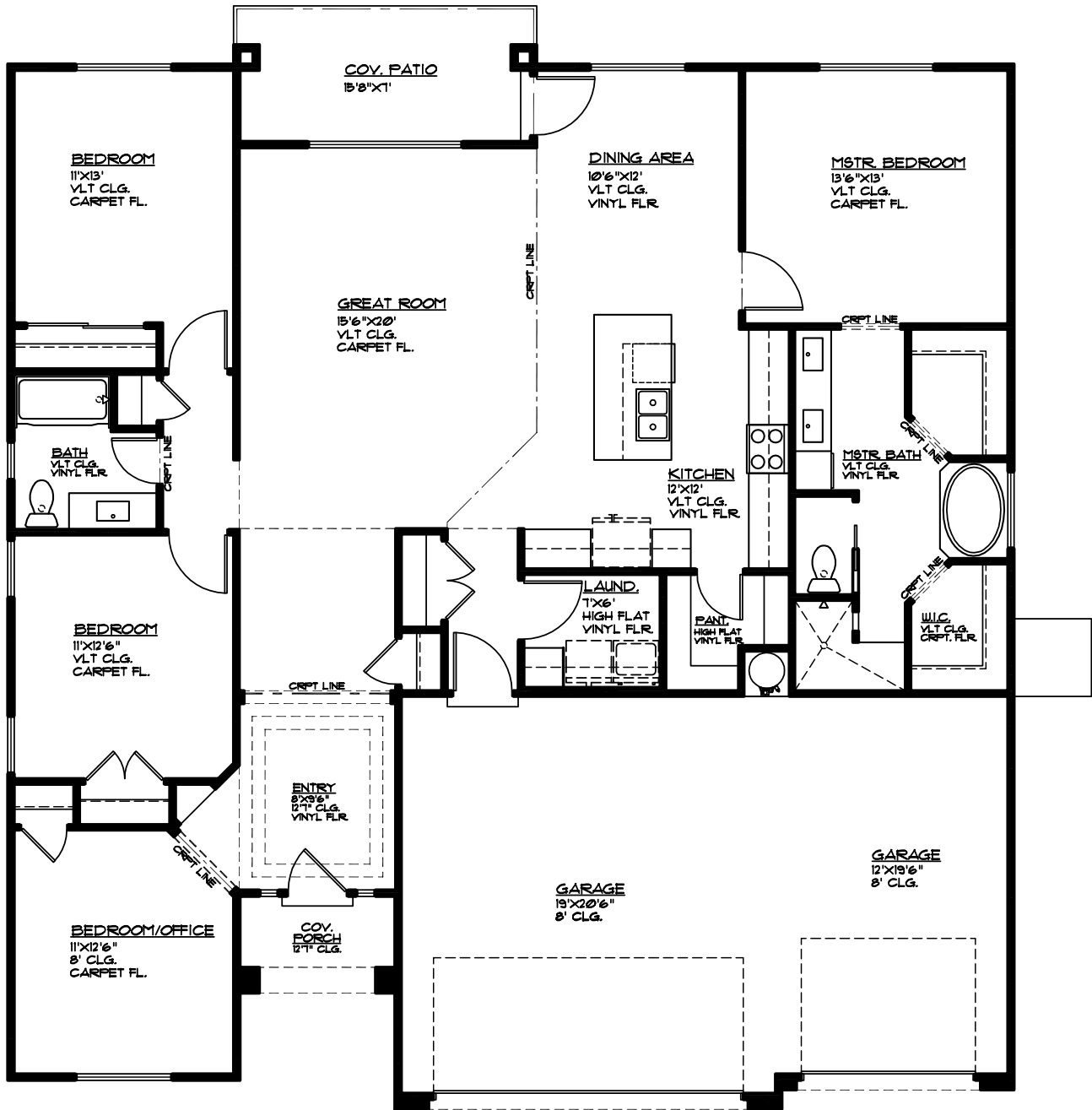
Plan 1958 FLOOR PLAN



Elmwood

3369 E. Crimson Ridge Dr.
St. George, UT
435.652.5515

1,958 Sqft • 4 Beds • 2 Baths • 3 Garages • 52' ▶ x 55' ▲



MAIN FLOOR PLAN

MAIN FLOOR 1958 SQ. FT.
GARAGE AREA 613 SQ. FT.
COV. PORCH 40 SQ. FT.
COV. PATIO 107 SQ. FT.