

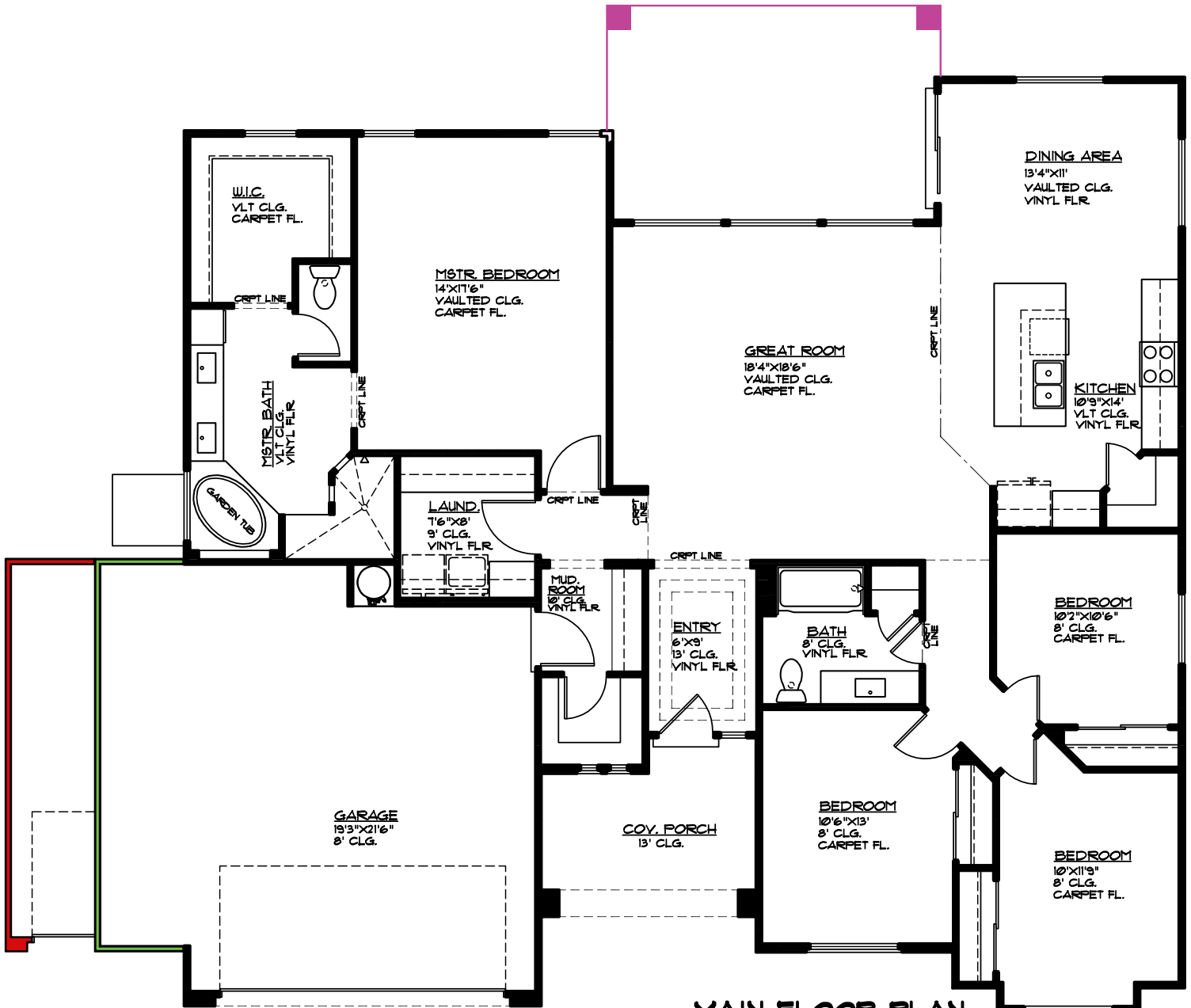


Plan 2010 OPTIONS



3369 E Crimson Ridge Dr.
St. George, UT
435.652.5515

Blake Bird 435.229.7866
Dan Wiarda 435.590.1260



- Covered Patio 18'8" x 4', 75 sq. ft.
- 5' Bump-out 5'x22', 110 sq. ft.
- 3rd Car Garage 12'x22', 220 sq. ft.

MAIN FLOOR PLAN

MAIN FLOOR 2010 SQ. FT.
GARAGE AREA 480 SQ. FT.
COV. PORCH 108 SQ. FT.
COV. PATIO 145 SQ. FT.
GARAGE BUMP-OUT OPT 110 SQ. FT.
3RD CAR GARAGE OPT 220 SQ. FT.
COV. PATIO OPT 15 SQ. FT.