

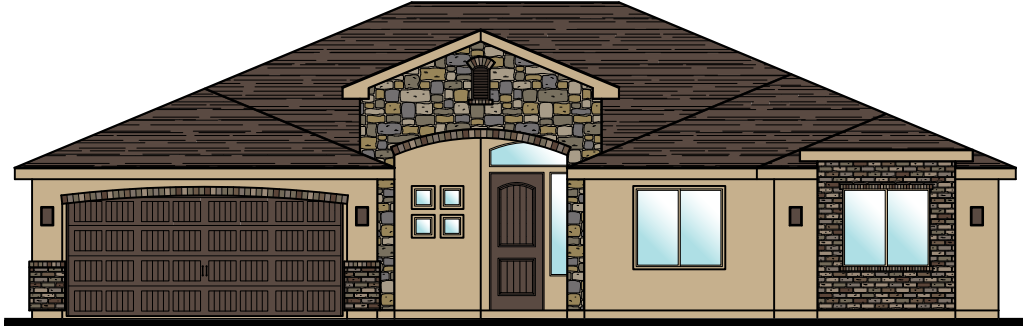


Plan 2010 ELEVATIONS



3369 E. Crimson Ridge Dr.
St. George, UT
435.652.5515

Oxford



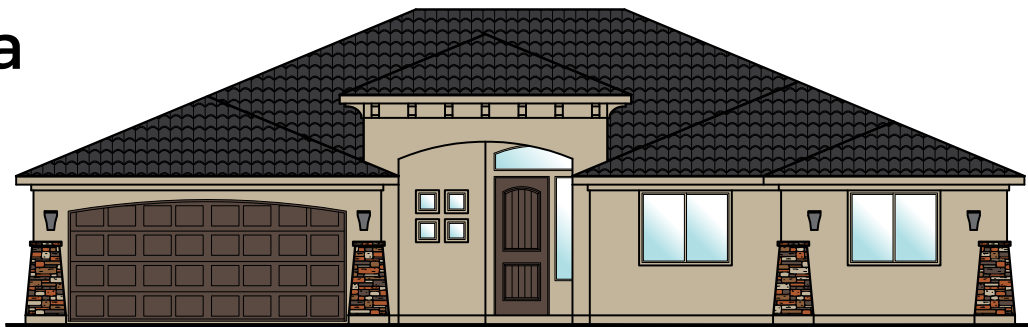
Westminster



Craftsman



Sedona





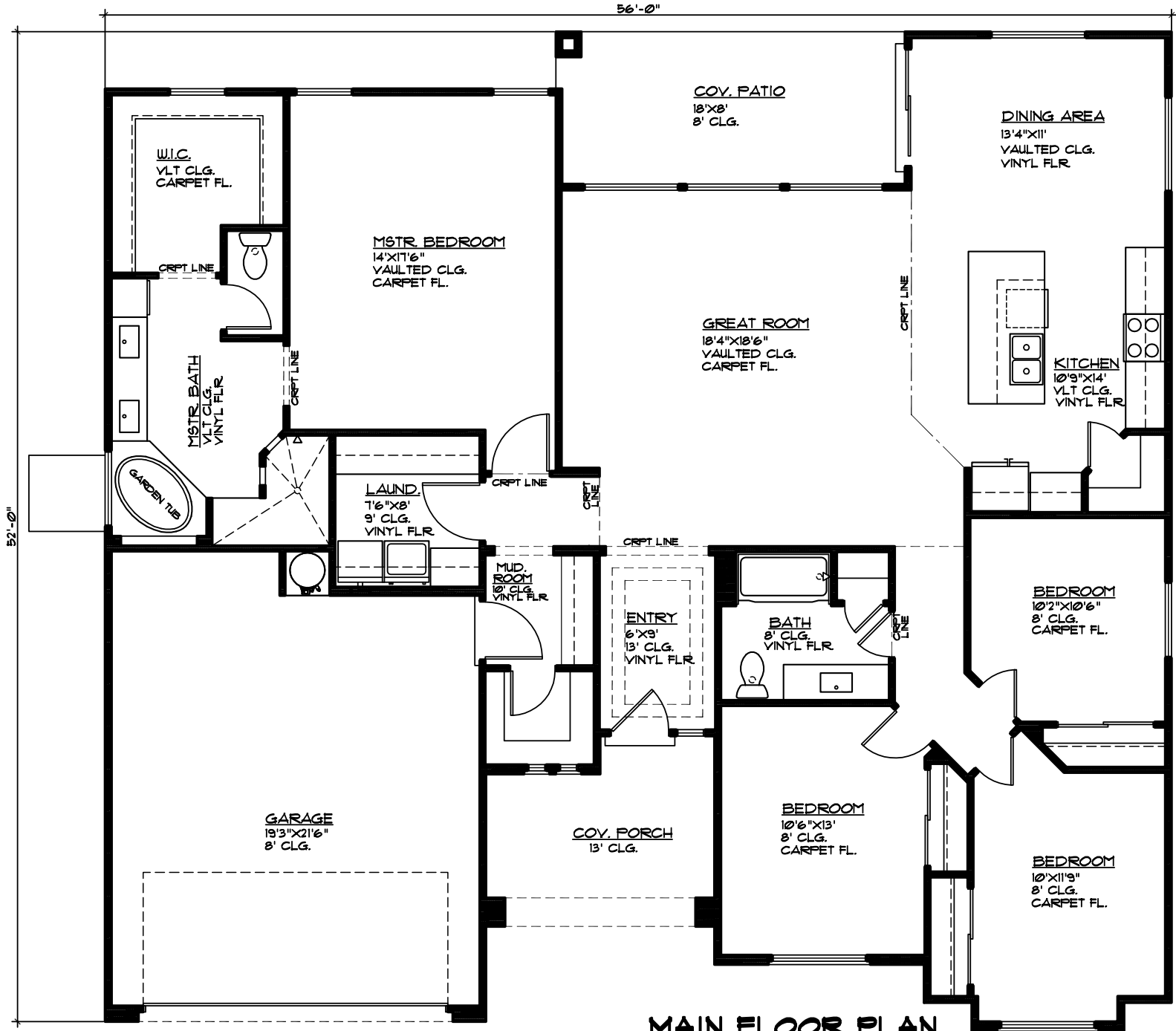
Plan 2010 FLOOR PLAN



Elmwood

3369 E. Crimson Ridge Dr.
St. George, UT
435.652.5515

2,010 Sqft • 4 Beds • 2 Baths • 2 Garages • 56' ▶ x 52' ▲



MAIN FLOOR PLAN

MAIN FLOOR 2010 SQ. FT.
GARAGE AREA 480 SQ. FT.