

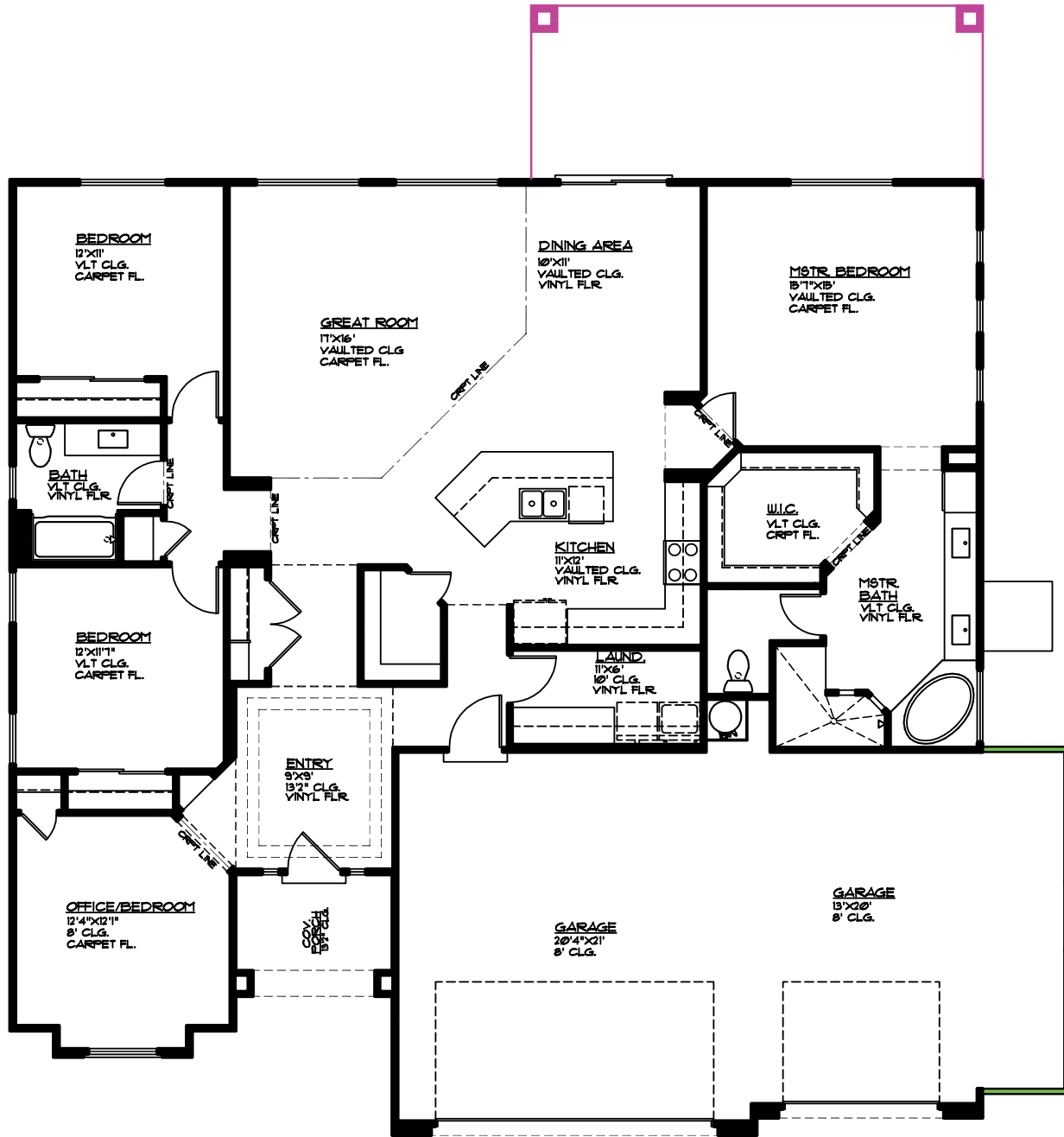


# Plan 2108 OPTIONS



3369 E Crimson Ridge Dr.  
St. George, UT  
435.652.5515

Blake Bird 435.229.7866  
Dan Wiarda 435.590.1260



- Covered Patio 26' x 10', 260 sq. ft.
- 5' Bump-out 5'x22', 100 sq. ft.

### MAIN FLOOR PLAN

MAIN FLOOR = 2199 SQ. FT.  
GARAGE AREA = 166 SQ. FT.  
COV. PORCH 63 SQ. FT.  
GARAGE BUMP-OUT OPT 100 SQ. FT.  
COV. PATIO OPT 260 SQ. FT.