

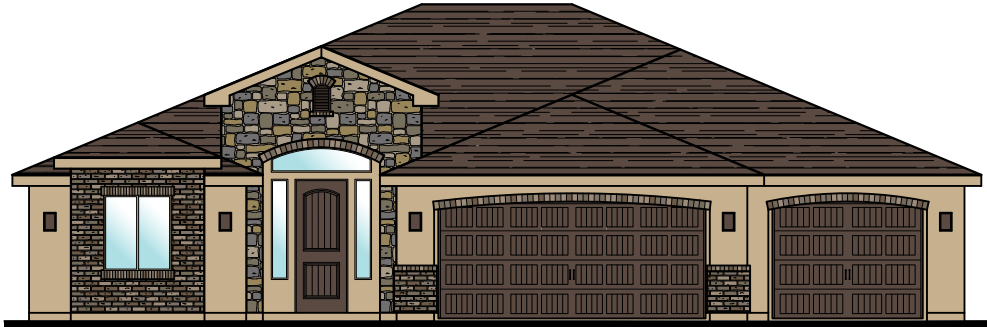


Plan 2108 ELEVATIONS

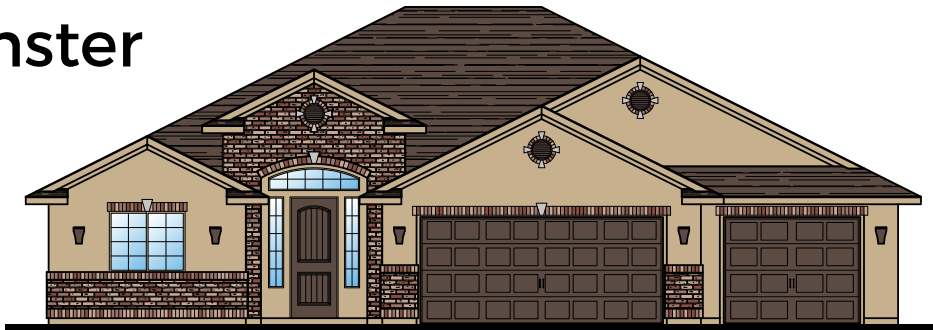


3369 E. Crimson Ridge Dr.
St. George, UT
435.652.5515

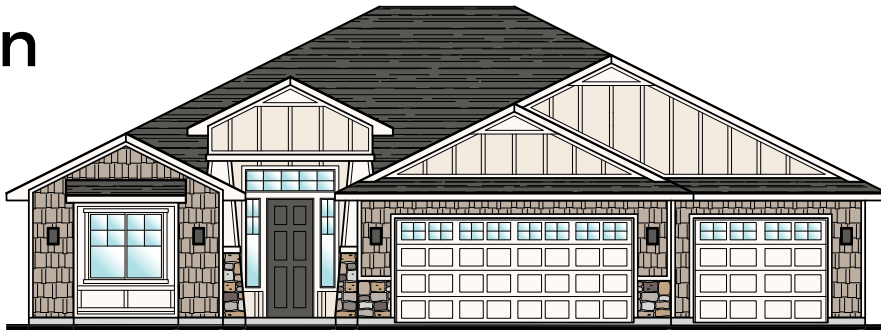
Oxford



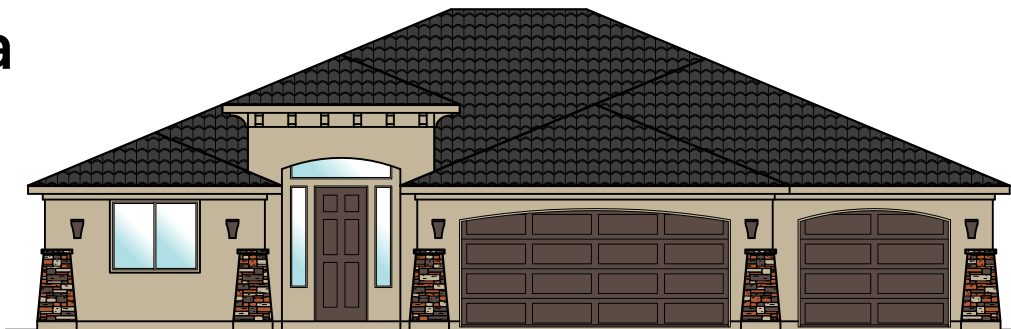
Westminster



Craftsman



Sedona





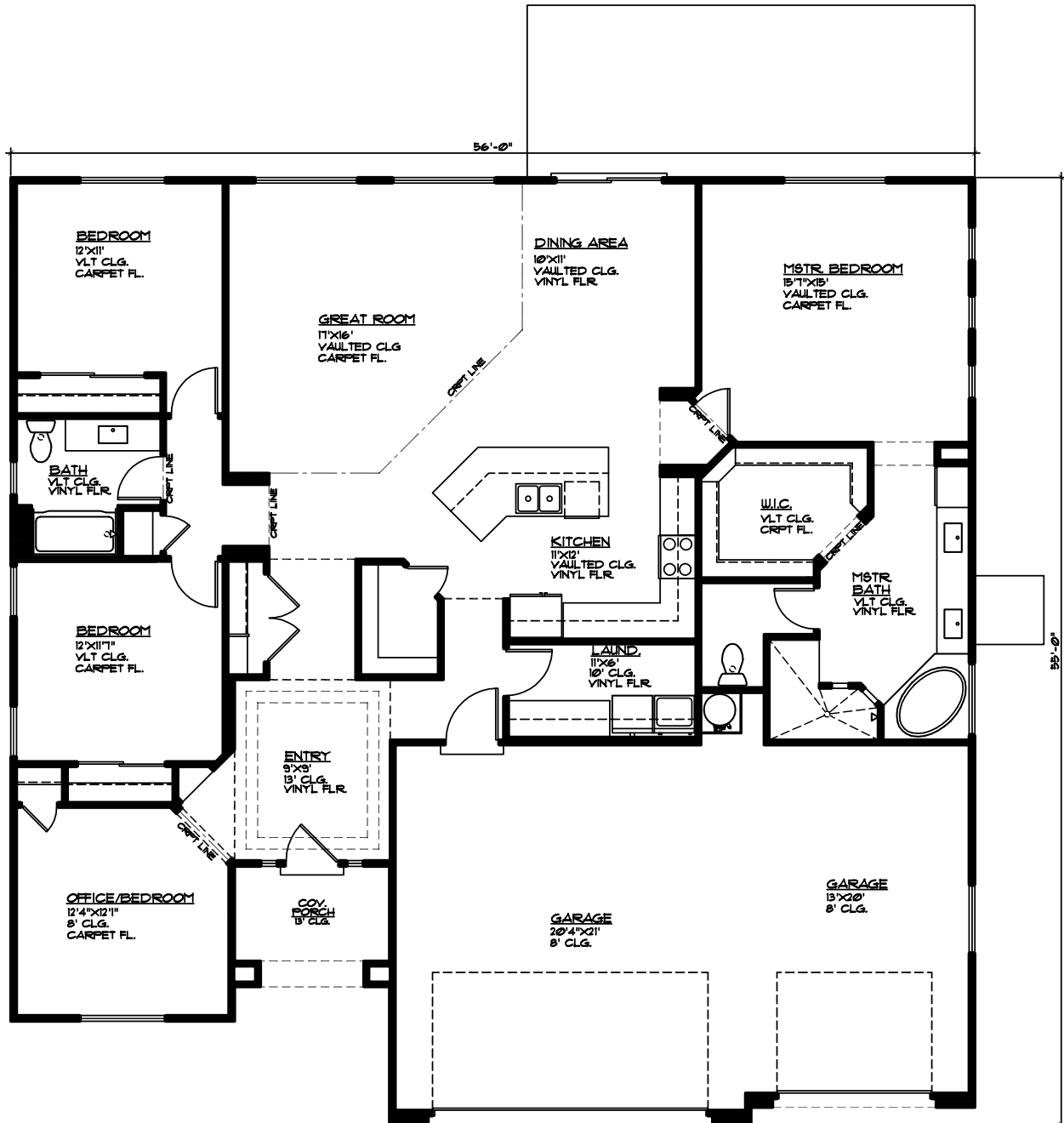
Plan 2108 FLOOR PLAN



Elmwood

3369 E. Crimson Ridge Dr.
St. George, UT
435.652.5515

2,108 Sqft • 4 Beds • 2 Baths • 3 Garages • 56' ▶ x 55' ▲



MAIN FLOOR PLAN

MAIN FLOOR = 2108 SQ. FT.
GARAGE AREA = 166 SQ. FT.