



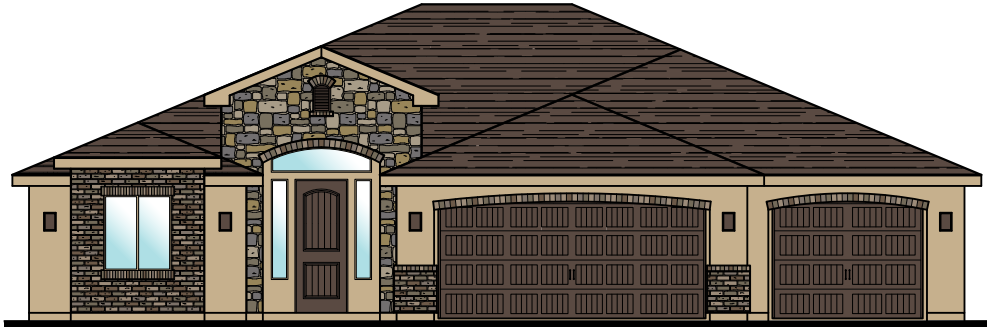
Plan 2108 ELEVATIONS



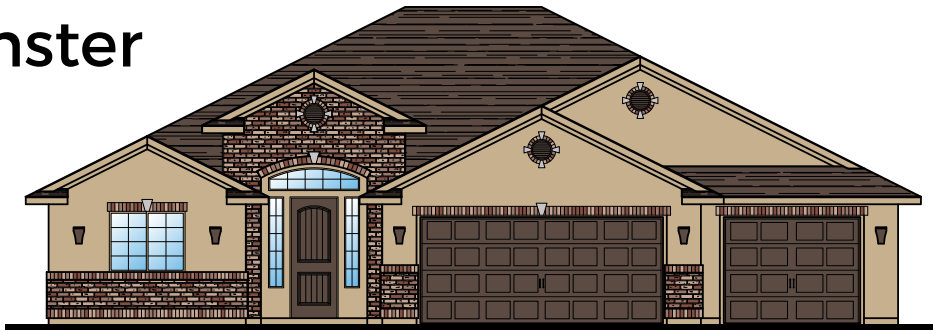
3369 E. Crimson Ridge Dr.,
St. George
435.652.5515

Blake Bird 435.229.7866
Dan Wiarda 435.590.1260

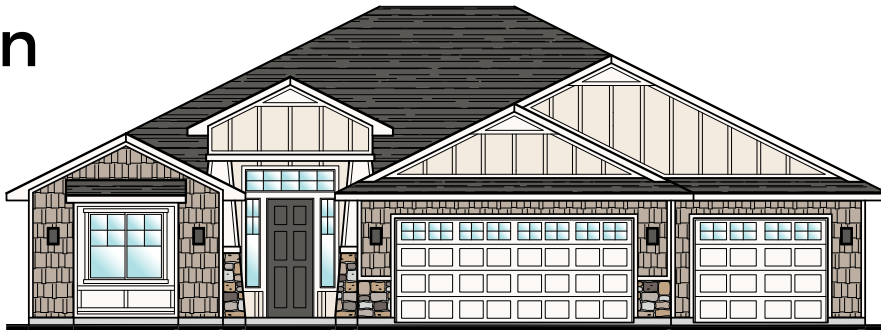
Oxford



Westminster



Craftsman



Sedona





Plan 2108 FLOOR PLAN

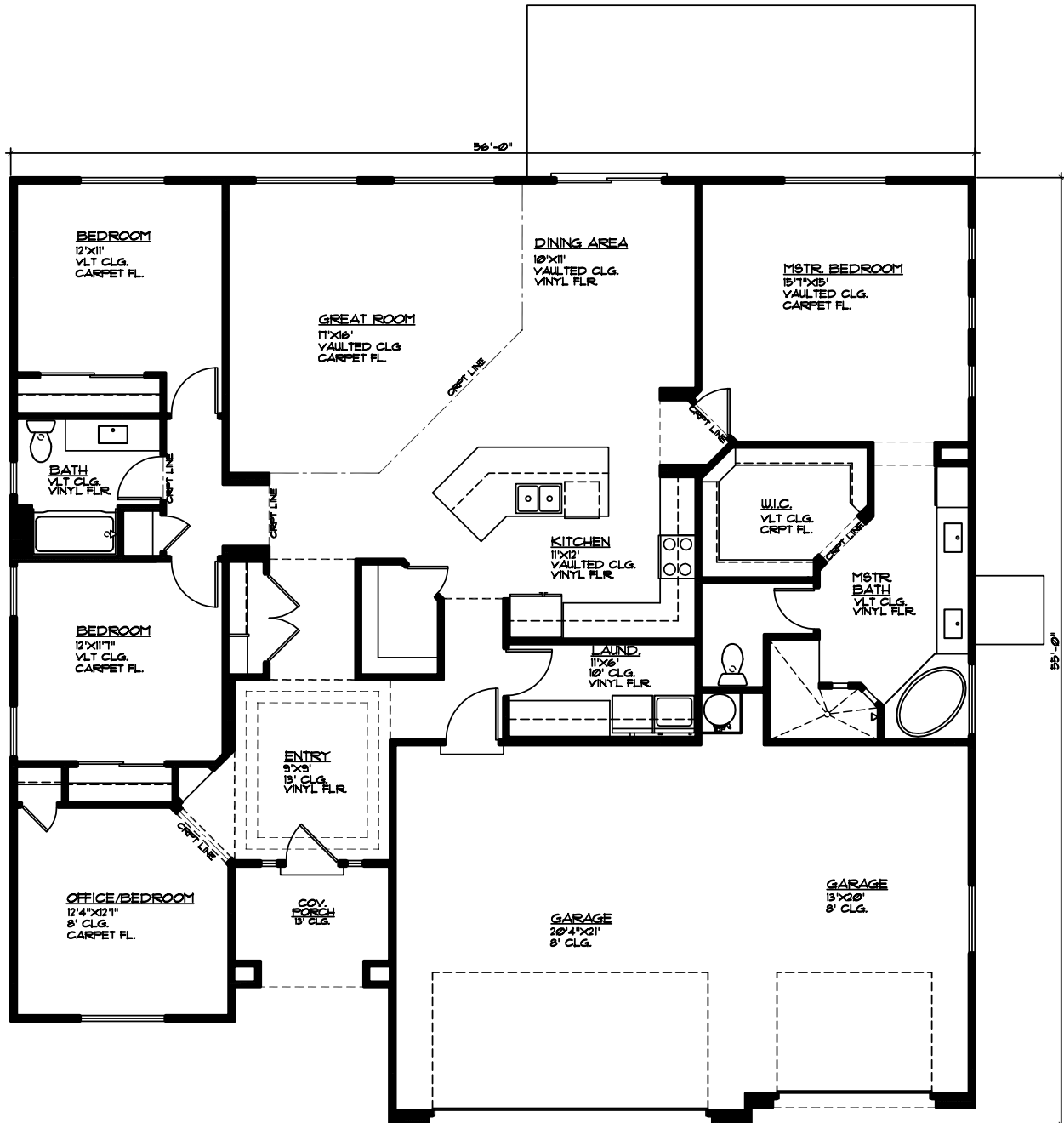


Elmwood

3369 E. Crimson Ridge
Dr., St. George
435.652.5515

Blake Bird 435.229.7866
Dan Wiarda 435.590.1260

2,108 Sqft • 4 Beds • 2 Baths • 3 Garages • 56' ▶ x 55' ▲



MAIN FLOOR PLAN

MAIN FLOOR = 2108 SQ. FT.
GARAGE AREA = 766 SQ. FT.

Copyright Ence Homes. All rights reserved. The above renderings are the artists interpretation. Actual construction elevations may differ. The use of these plans is expressly limited to Ence Homes. Re-use, reproduction, or publication by any method, in whole or in part, is prohibited and punishable by law. All square footage is approximate. Actual dimensions will be according to the official architectural drawings. Floor plan may vary according to elevation chosen.