

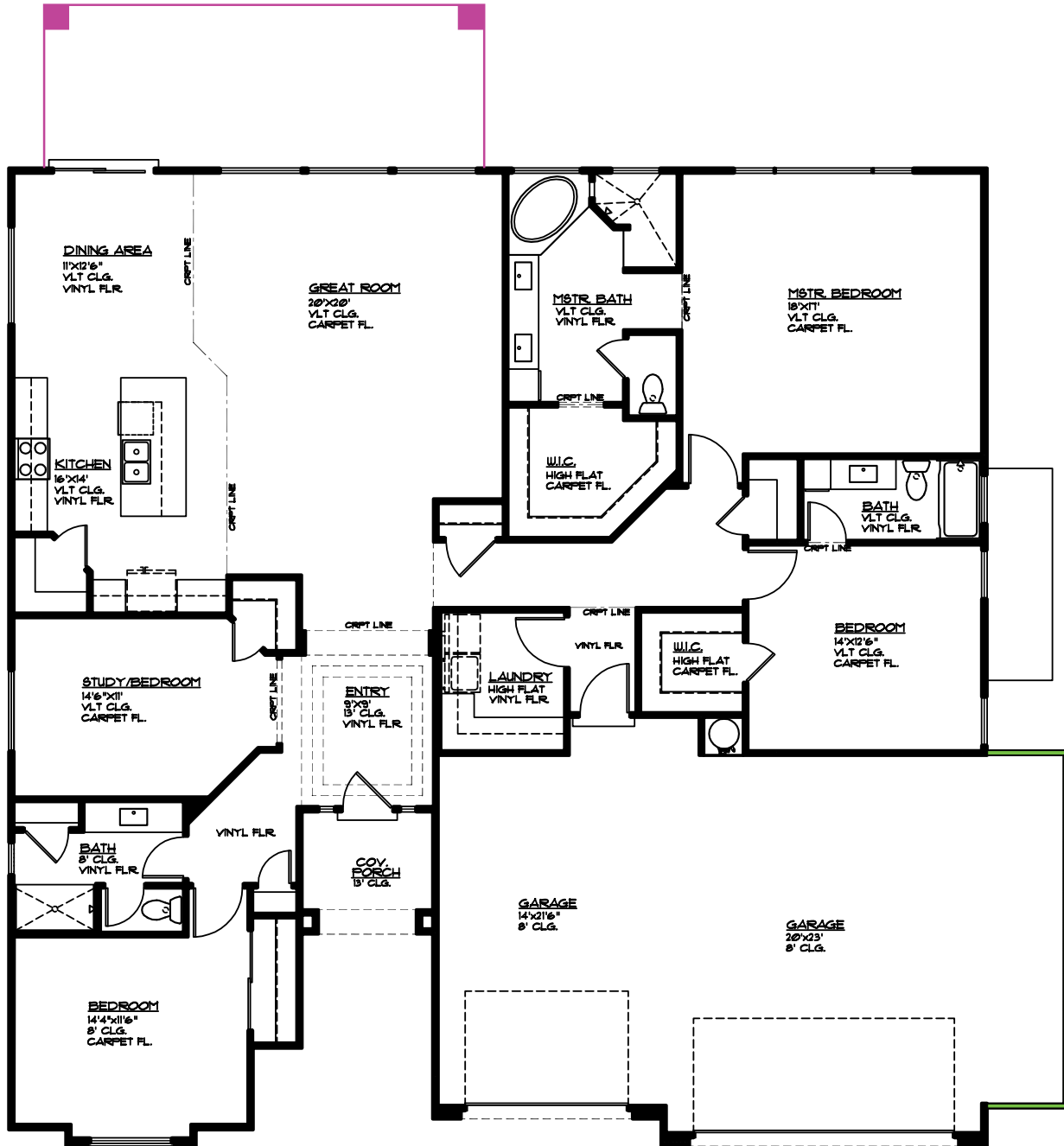


Plan 2586 OPTIONS



3369 E Crimson Ridge Dr.
St. George, UT
435.652.5515

Blake Bird 435.229.7866
Dan Wiarda 435.590.1260



- Covered Patio 27' x 9', 243 sq. ft.
- 5' Bump-out 5'x22', 110 sq. ft.

MAIN FLOOR PLAN
 MAIN FLOOR = 2586 SQ. FT.
 GARAGE AREA = 811 SQ. FT.
 COV. PORCH 60 SQ. FT.
 GARAGE BUMP-OUT OPT 110 SQ. FT.
 COV. PATIO OPT 270 SQ. FT.