

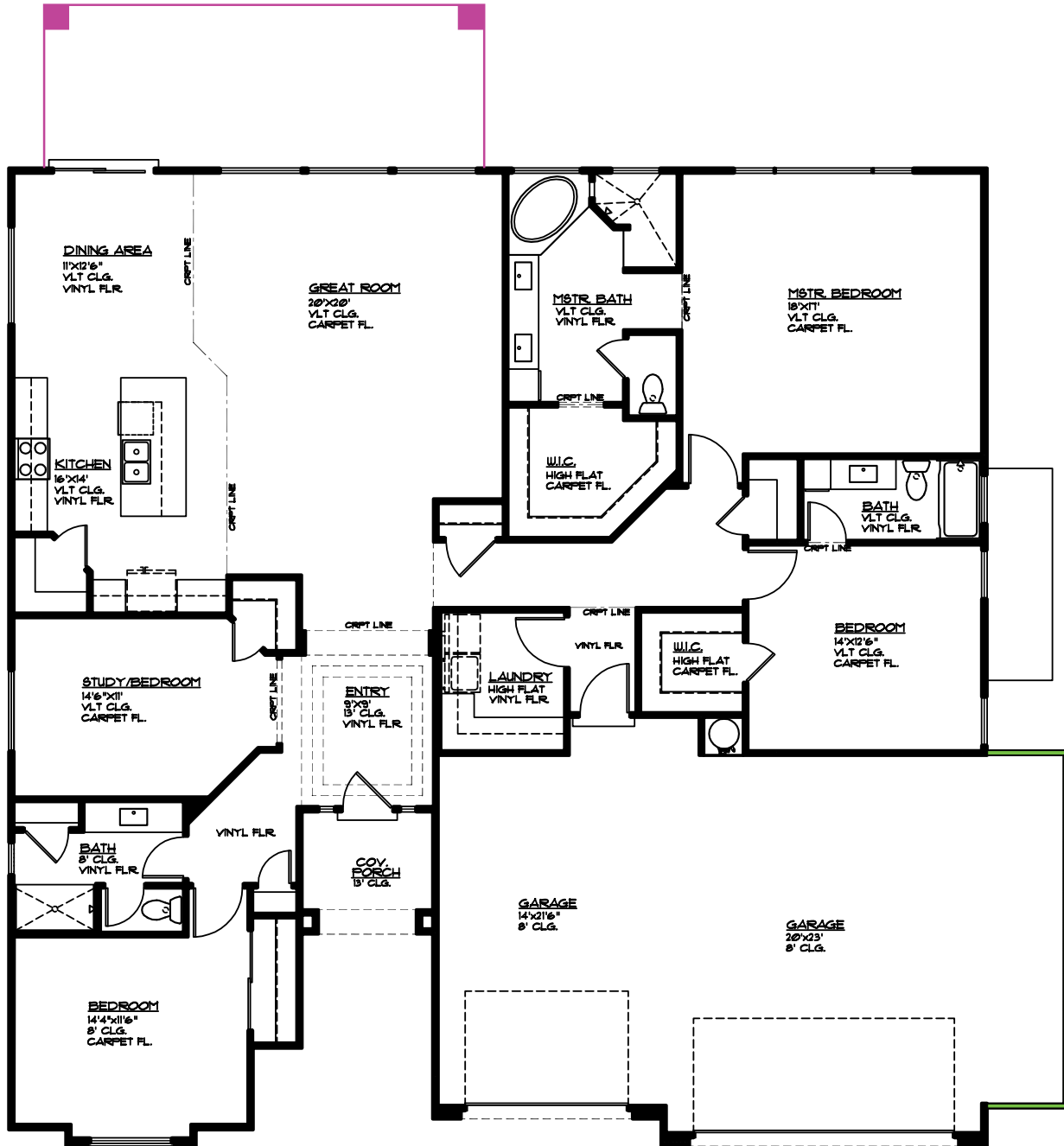


# Plan 2586 OPTIONS



3369 E Crimson Ridge Dr.  
St. George, UT  
435.652.5238

Blake Bird 435.229.7866  
Dan Wiarda 435.590.1260



- Covered Patio 27' x 10', 270 sq. ft.
- 5' Bump-out 5'x22', 110 sq. ft.

**MAIN FLOOR PLAN**  
 MAIN FLOOR = 2586 SQ. FT.  
 GARAGE AREA = 811 SQ. FT.  
 COV. PORCH 60 SQ. FT.  
 GARAGE BUMP-OUT OPT 110 SQ. FT.  
 COV. PATIO OPT 270 SQ. FT.