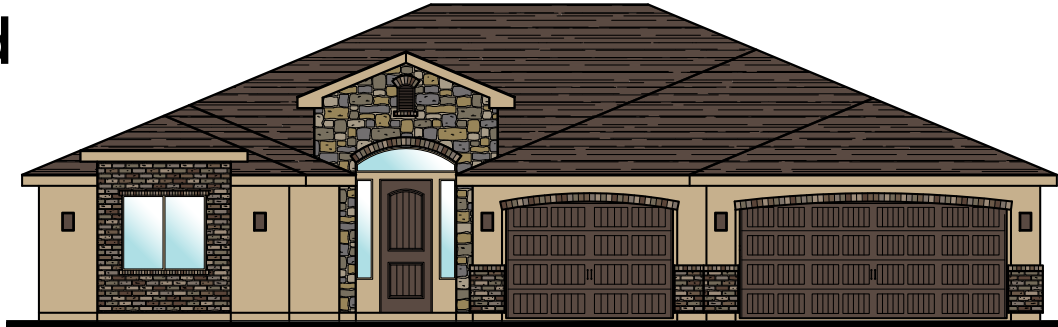




3369 E. Crimson Ridge Dr.
St. George, UT
435.652.5515

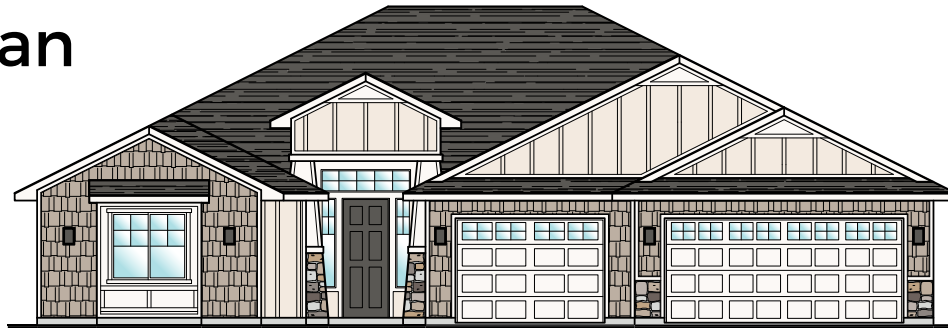
Oxford



Westminster



Craftsman



Sedona





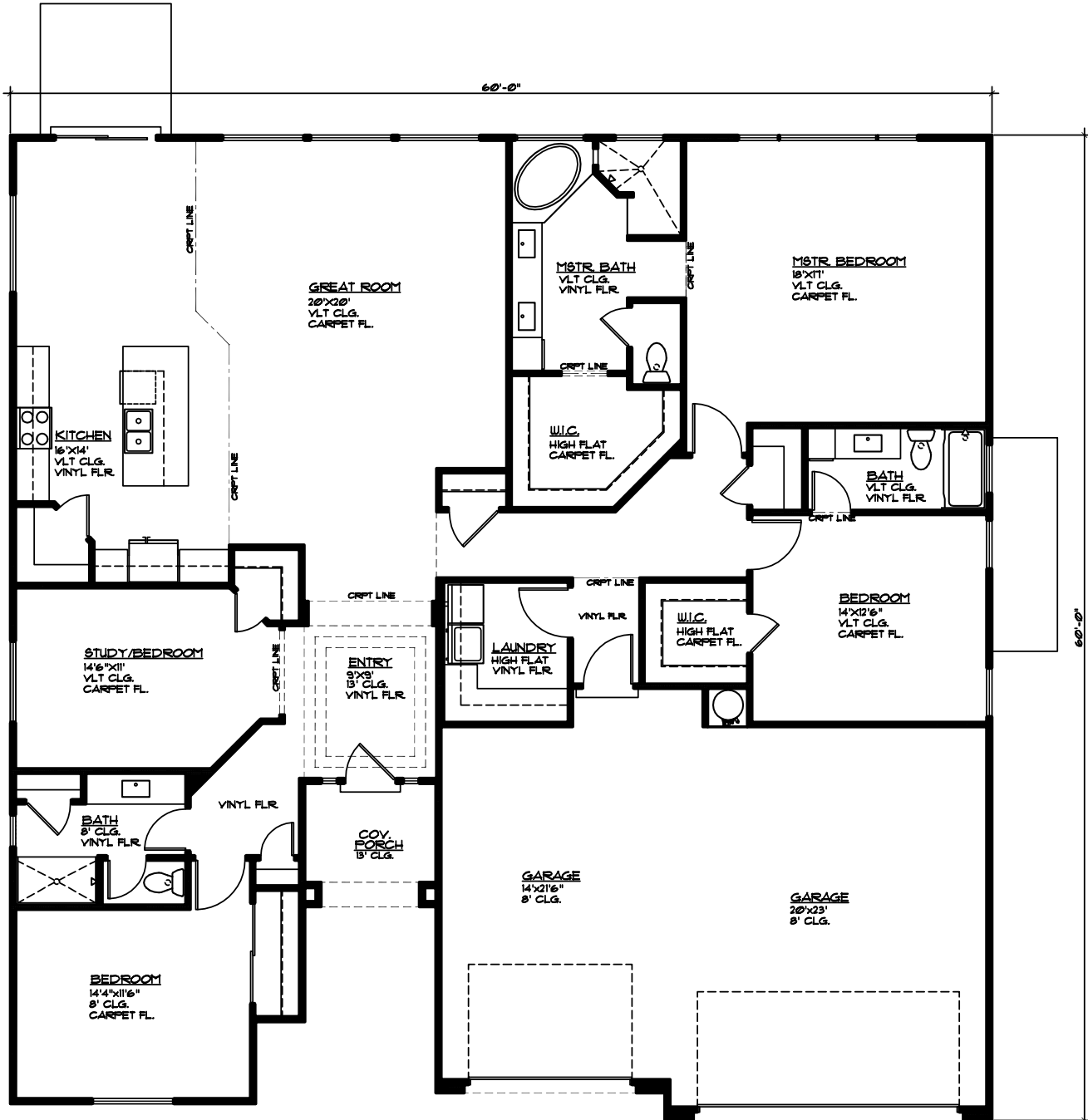
Plan 2586 FLOOR PLAN



Elmwood

3369 E. Crimson Ridge Dr.
St. George, UT
435.652.5515

2,586 Sqft • 4 Beds • 3 Baths • 3 Garages • 60' ► x 60' ▲



MAIN FLOOR PLAN

MAIN FLOOR = 2586 SQ. FT.
GARAGE AREA = 811 SQ. FT.