

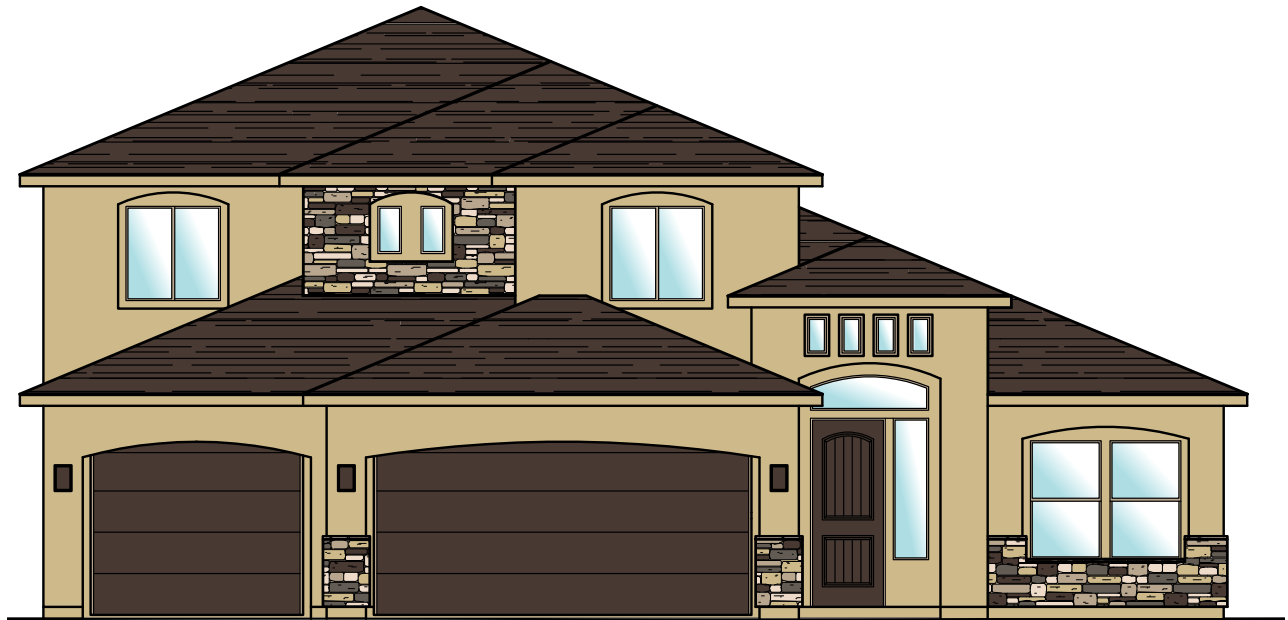


Plan 3300  
OPTIONS

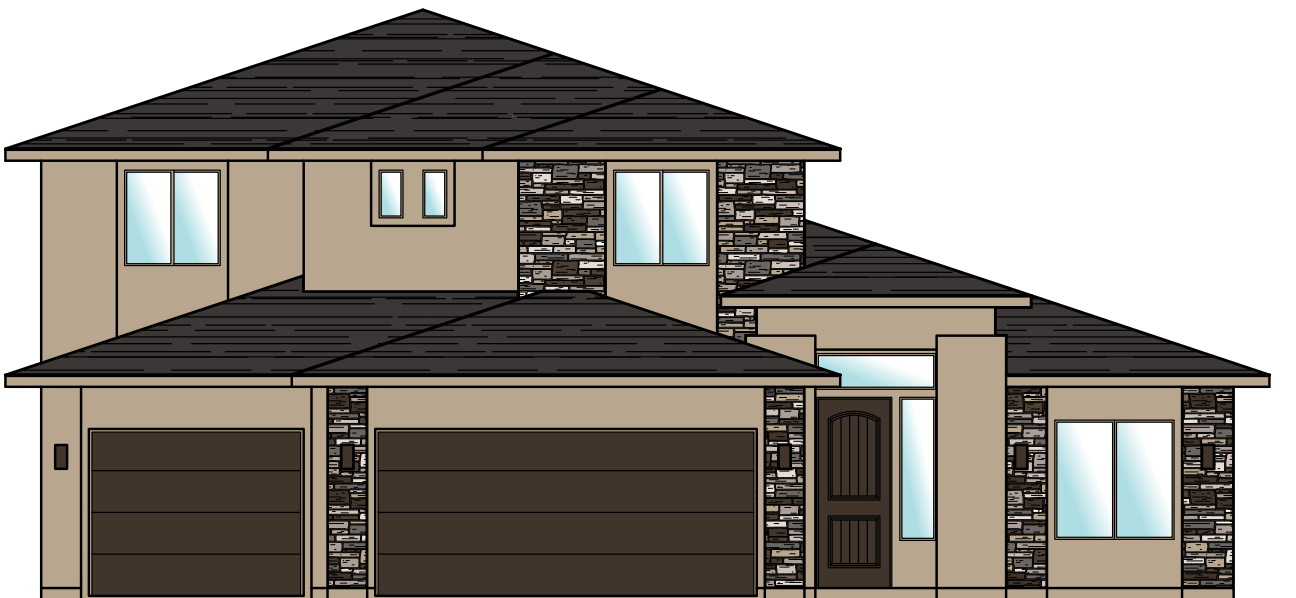
WHITE  SANDS

1576 E. Hayrocks Dr.  
St. George, UT  
435.652.5237

## Monterey Rock Option



## Winslow Prairie Rock Option





# Plan 3300 OPTIONS

**WHITE SANDS**

1576 E. Hayrocks Dr.  
St. George, UT  
435.652.5237



**MAIN FLOOR PLAN**

MAIN FLOOR - 1944 SQ. FT.  
 GARAGE AREA - 680 SQ. FT.  
 GARAGE BUMP-OUT OPT = 95 SQ. FT.  
 2' GARAGE EXTENSION 64 SQ. FT.  
 4' GARAGE EXTENSION 128 SQ. FT.  
 COV. PORCH - 45 SQ. FT.  
 COV. PATIO - 101 SQ. FT.  
 COV. PATIO OPT - 109 SQ. FT.

- Covered Patio 21'8" x 5', 109 sq. ft.
- 5' Bump-out 5'x18'4", 95 sq. ft.