



# MODEL LEASEBACK



ARROYO

Lot # 94

## HOMES LOCATED AT:

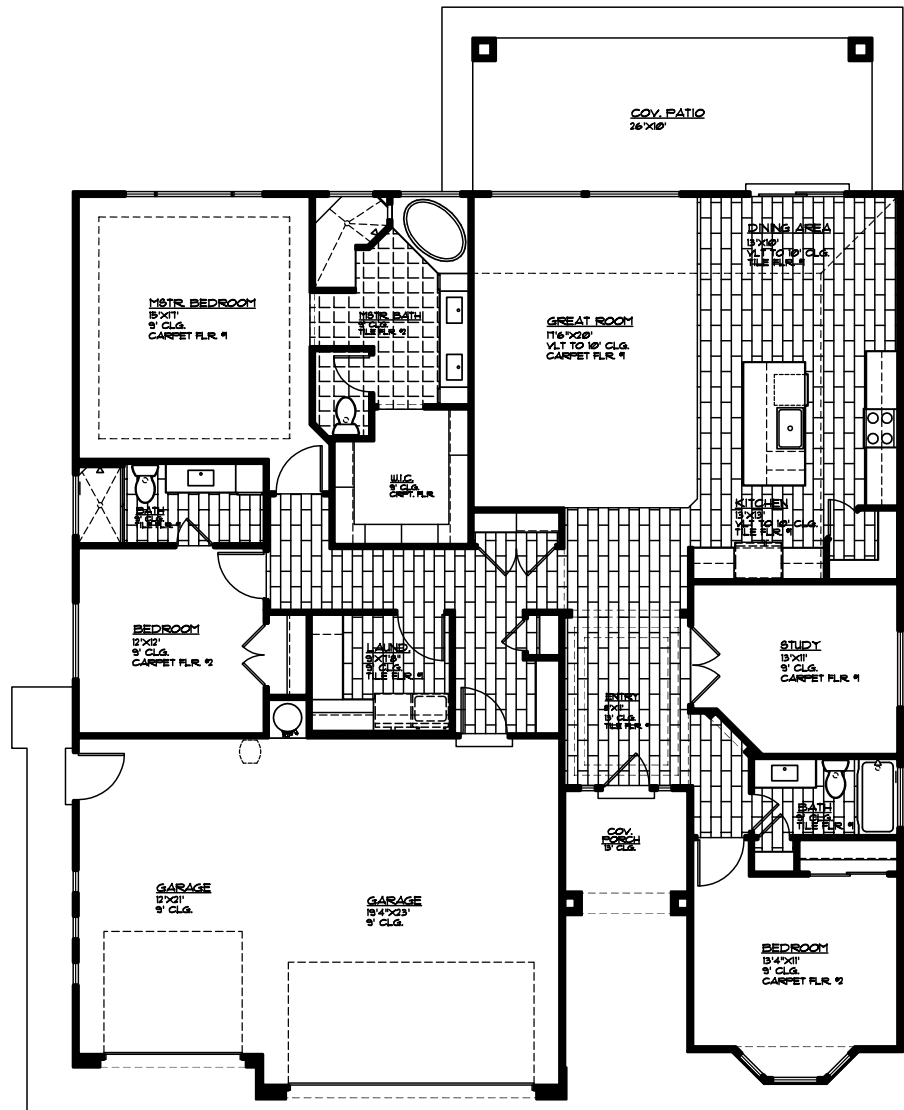
879 N. Sage Crest Dr.  
Washington, UT

2224 Square Feet  
4 Bed | 3 Bath  
3 Car Garage

## CALL FOR PRICING

## INCLUDED FEATURES:

- 8' Doors
- Full Landscaping
- Granite Countertops
- Wood Look Tile 6" X 36"
- Kitchen Backsplash
- Window Coverings
- Furniture (Except Office)
- Security System



**MAIN FLOOR PLAN**  
 MAIN FLOOR - 2224 SQ. FT.  
 GARAGE AREA - 806 SQ. FT.  
 COV. PORCH - 48 SQ. FT.  
 COV. PATIO - 260 SQ. FT.

MLS #17-189218

FOR FURTHER DETAILS CONTACT: 435.216.1707

MARKETED BY ENCE REALTY - VISIT US TODAY OR GO ONLINE AT: WWW.ENCEHOMES.COM