

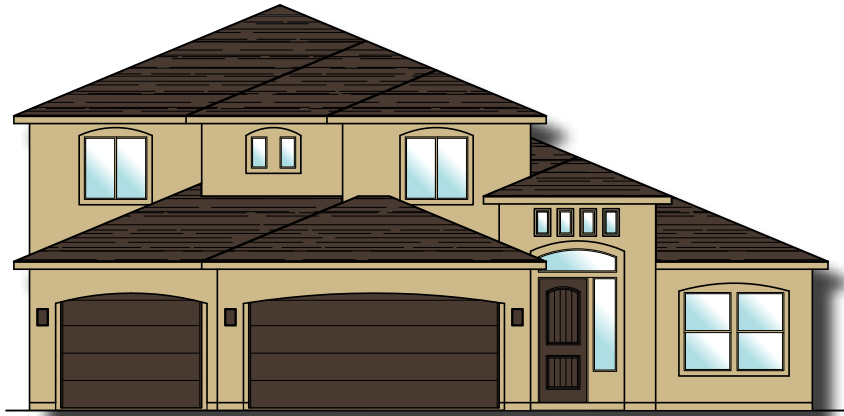


# Plan 3300 ELEVATIONS

WHITE  SANDS

1576 E. Hayrocks Dr.  
St. George, UT  
435.216.1722

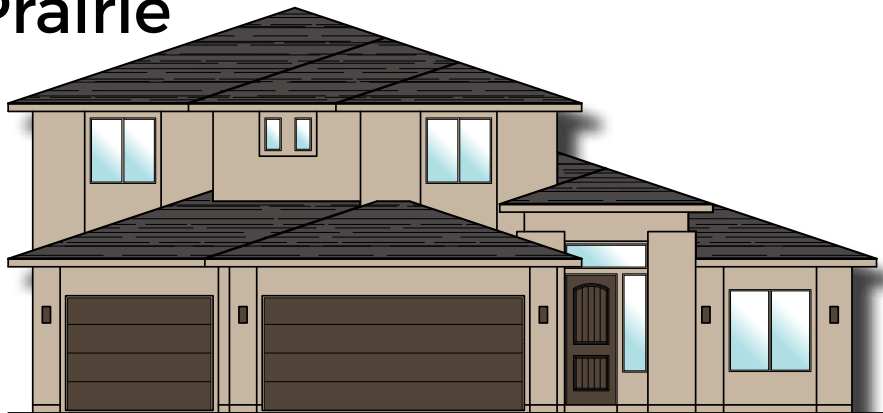
## Monterey



## Roosevelt



## Winslow Prairie



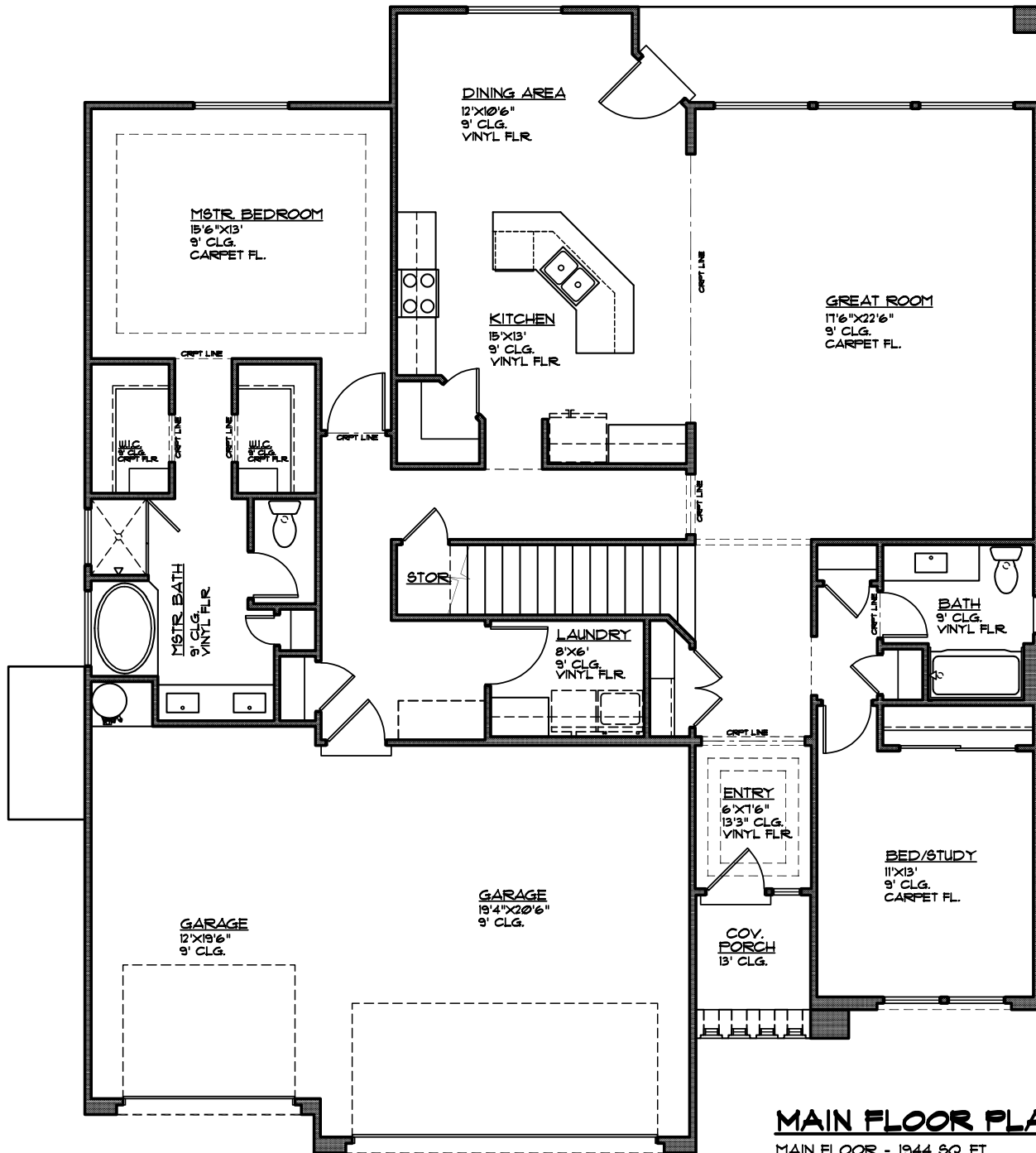


# Plan 3300 FLOOR PLAN

WHITE  SANDS

1576 E. Hayrocks Dr.  
St. George, UT  
435.216.1722

3,300 Sqft • 6 Beds • 4 Baths • 3 Garages • 50' ► x 60' ▲



## MAIN FLOOR PLAN

MAIN FLOOR - 1944 SQ. FT.  
 GARAGE AREA - 680 SQ. FT.  
 COV. PORCH - 45 SQ. FT.  
 COV. PATIO - 101 SQ. FT.



# Plan 3300 FLOOR PLAN



1576 E. Hayrocks Dr.  
St. George, UT  
435.216.1722

3,300 Sqft • 6 Beds • 4 Baths • 3 Garages • 50' ► x 60' ▲

