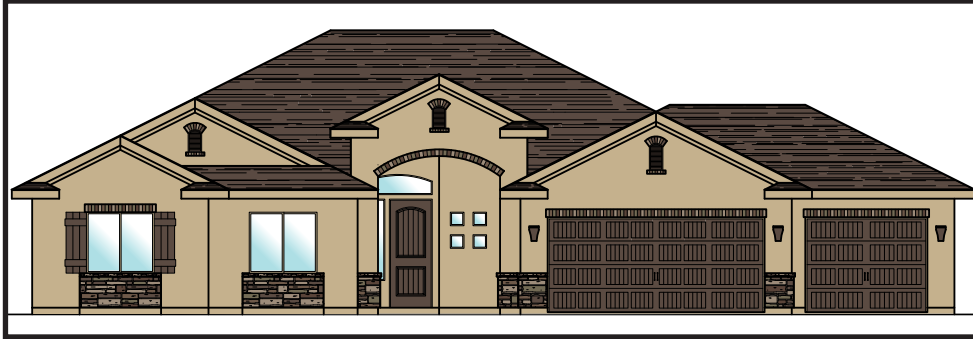




UNDER CONSTRUCTION MOVE-IN READY



Painted Desert

Lot # 81

HOMES LOCATED AT:

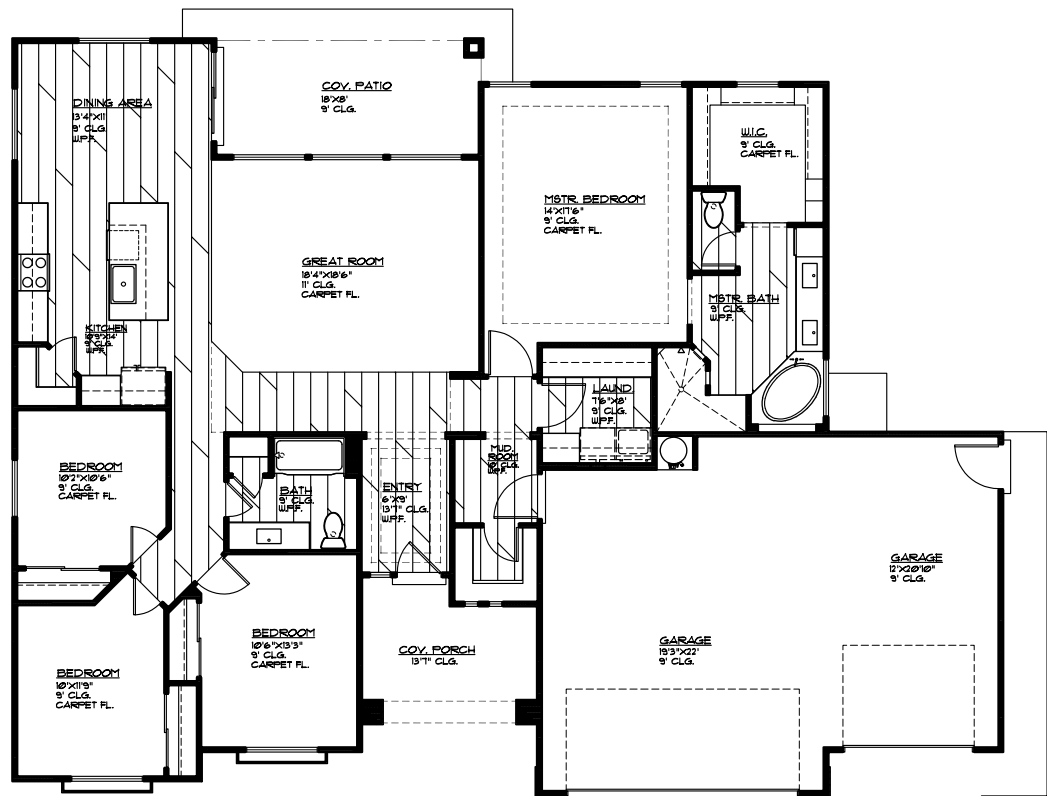
1630 E. 2450 S. 81
St George, UT

2010 Square Feet
4 Bed | 2 Bath
3 Car Garage

CALL FOR PRICING

INCLUDED FEATURES:

- Covered Patio
- Granite Countertops
- Two Tone Paint
- Full Landscaping
- Waterproof Flooring
- Tile Backsplash



MAIN FLOOR PLAN

MAIN FLOOR 2010 SQ. FT.
GARAGE AREA 144 SQ. FT.
COV. PORCH 108 SQ. FT.
COV. PATIO 145 SQ. FT.

MLS #18-194840

FOR FURTHER DETAILS CONTACT: 435.216.1707

MARKETED BY ENCE REALTY - VISIT US TODAY OR GO ONLINE AT: WWW.ENCEHOMES.COM