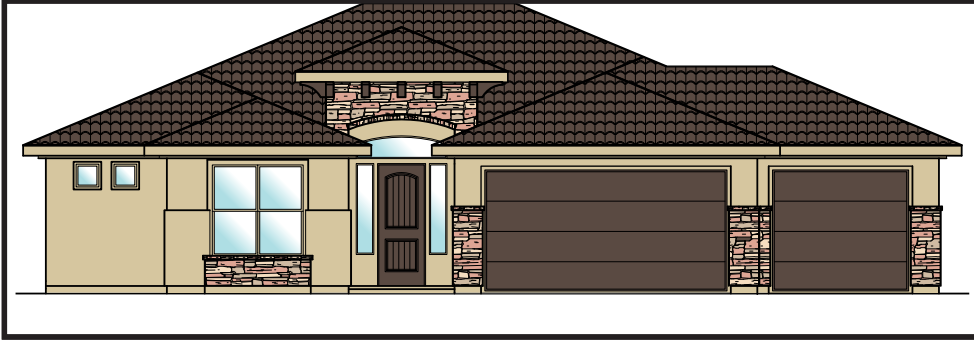




UNDER CONSTRUCTION MOVE-IN READY



Lot #68

HOMES LOCATED AT:

Riverbend Dr.
St. George, UT

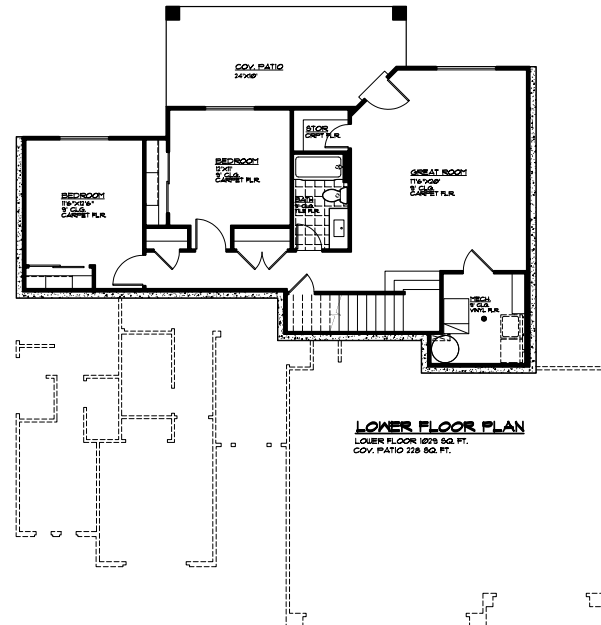
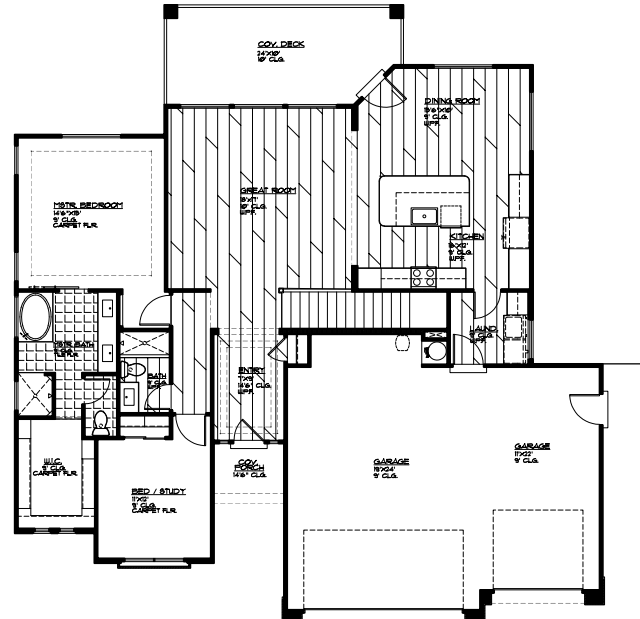
2803 Square Feet
4 Bed | 3 Bath
3 Car Garage

CALL FOR PRICING

INCLUDED FEATURES:

- Quartz Countertops
- Full Landscaping
- Tile Backsplash
- Two-Tone Paint
- 8' Tall Doors
- Water Proof Flooring
- Premium Carpet Pad
- Covered Patio

MLS #18-195227



FOR FURTHER DETAILS CONTACT: 435.216.1707

MARKETED BY ENCE REALTY - VISIT US TODAY OR GO ONLINE AT: WWW.ENCEHOMES.COM