



Plan 2004 ELEVATIONS



1533 W. Firepit Knoll Dr.
St. George, UT
435.216.4332

Moderno



Santa Rosa



Marbella



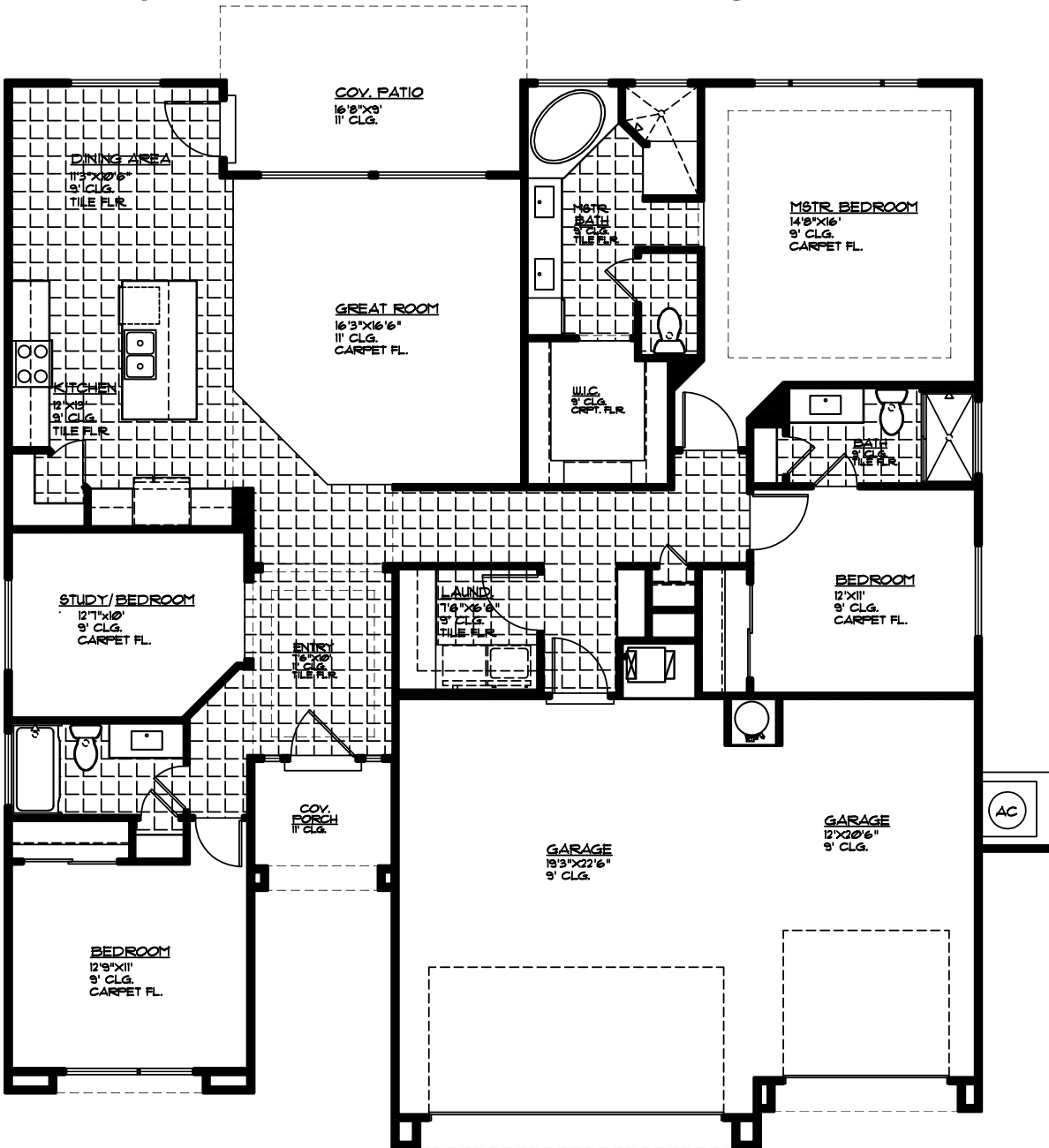


Plan 2004 FLOOR PLAN



1533 W. Firepit Knoll Dr.,
St. George, UT
435.216.4332

2,004 Sqft • 4 Beds • 3 Baths • 3 Garages • 53' ► x 58' ▲



MAIN FLOOR PLAN

MAIN FLOOR 2004 SQ. FT.
GARAGE AREA 168 SQ. FT.
COV. PORCH 53 SQ. FT.
COV. PATIO 141 SQ. FT.