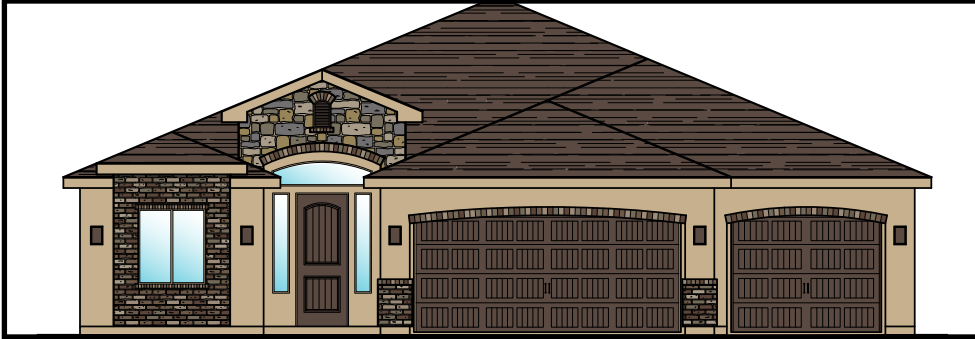




UNDER CONSTRUCTION
MOVE-IN READY



Lot #66

HOMES LOCATED AT:

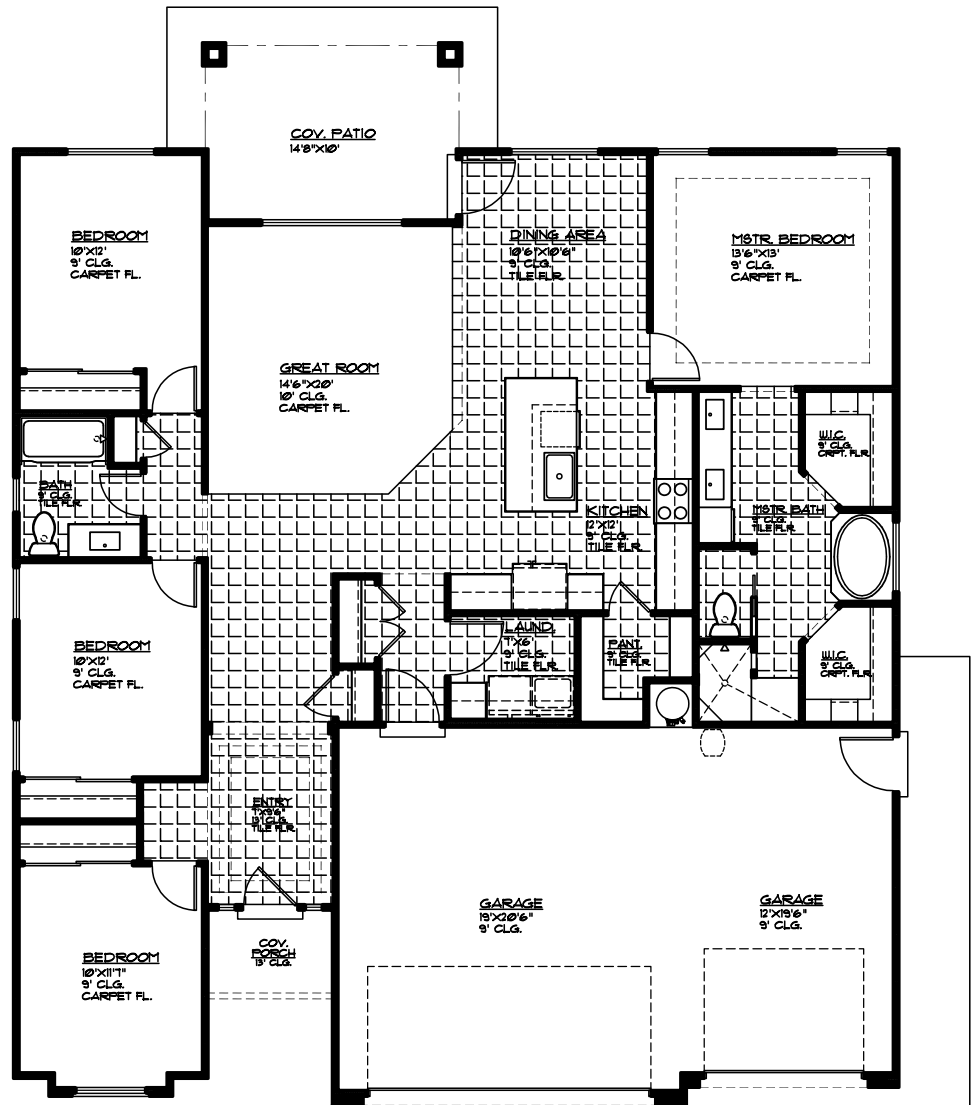
St. George, UT

1872 Square Feet
4 Bed | 2 Bath
3 Car Garage

CALL FOR PRICING

INCLUDED FEATURES:

- Covered Patio
- Granite Countertops
- Premium Carpet Pad
- Two-Tone Paint
- Wood Look Tile
- Painted Cabinets
- Kitchen Backsplash



MAIN FLOOR PLAN

MAIN FLOOR 1872 SQ. FT.
GARAGE AREA 673 SQ. FT.
COV. PORCH 35 SQ. FT.

MLS #

FOR FURTHER DETAILS CONTACT: 435.216.1707

MARKETED BY ENCE REALTY - VISIT US TODAY OR GO ONLINE AT: WWW.ENCEHOMES.COM