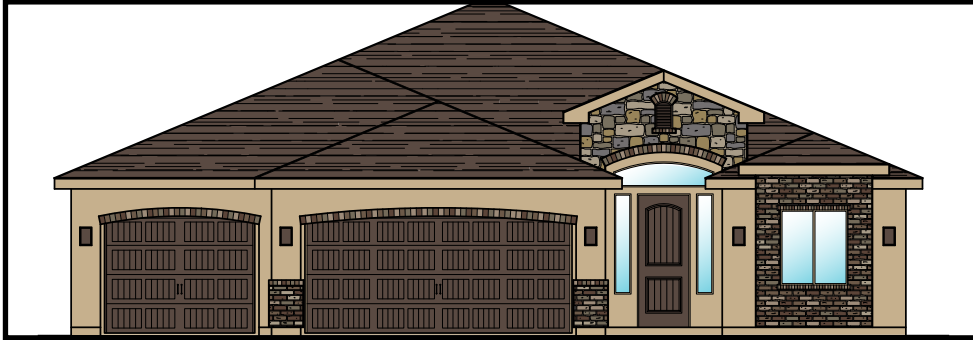




UNDER CONSTRUCTION
MOVE-IN READY



Lot # 85

HOMES LOCATED AT:

Washington, Utah

1872 Square Feet

4 Bed | 2 Bath

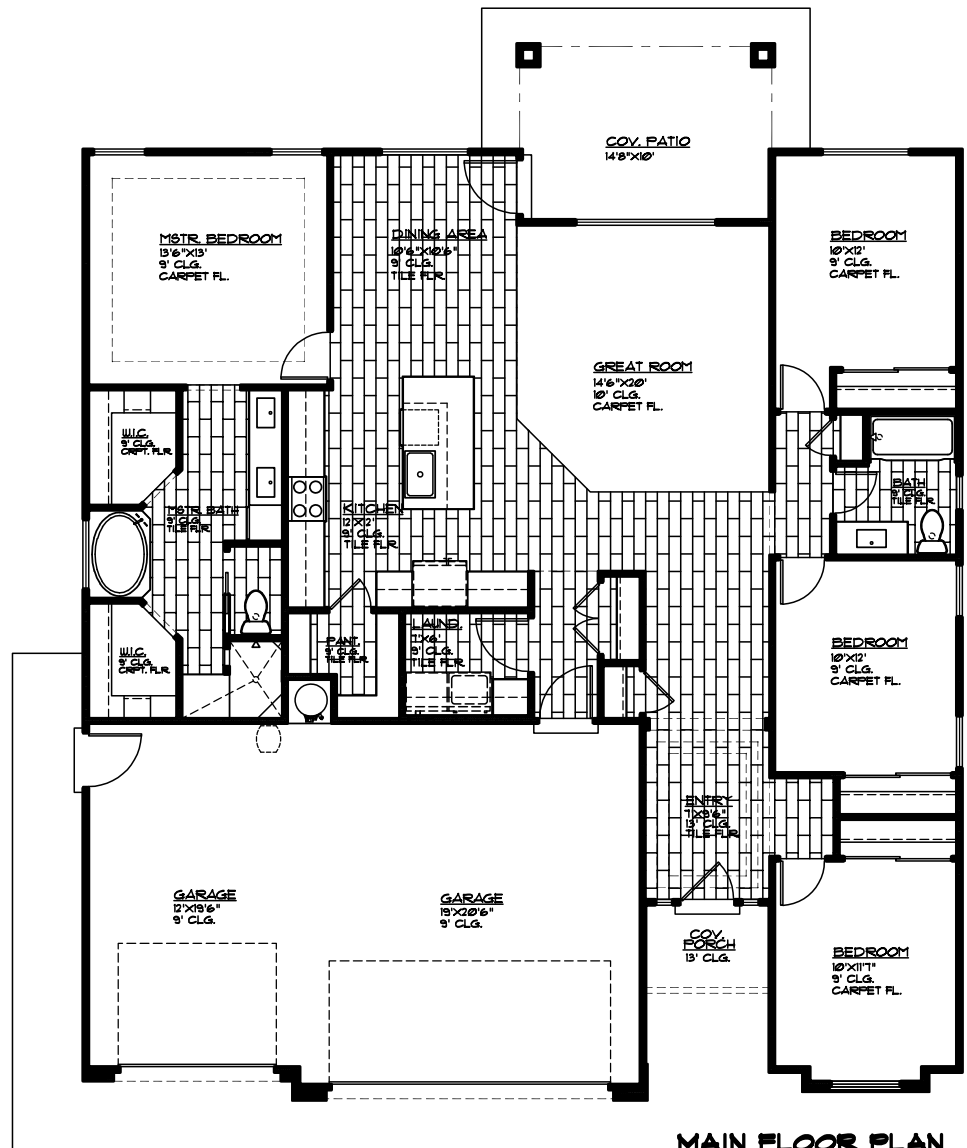
3 Car Garage

CALL FOR PRICING

INCLUDED FEATURES:

- Covered Patio
- Granite Countertops
- Full Landscaping
- Two-Tone Paint
- Wook-Look Tile Floor
- Premium Carpet Pad
- Kitchen Backsplash

MLS #19-200213



MAIN FLOOR PLAN

MAIN FLOOR 1872 SQ. FT.
GARAGE AREA 673 SQ. FT.
COV. PORCH 35 SQ. FT.
COV. PATIO 144 SQ. FT.

FOR FURTHER DETAILS CONTACT: 435.216.1707

MARKETED BY ENCE REALTY - VISIT US TODAY OR GO ONLINE AT: WWW.ENCEHOMES.COM