



# UNDER CONSTRUCTION MOVE-IN READY



## POCKET MESA

### Lot #35

### HOMES LOCATED AT:

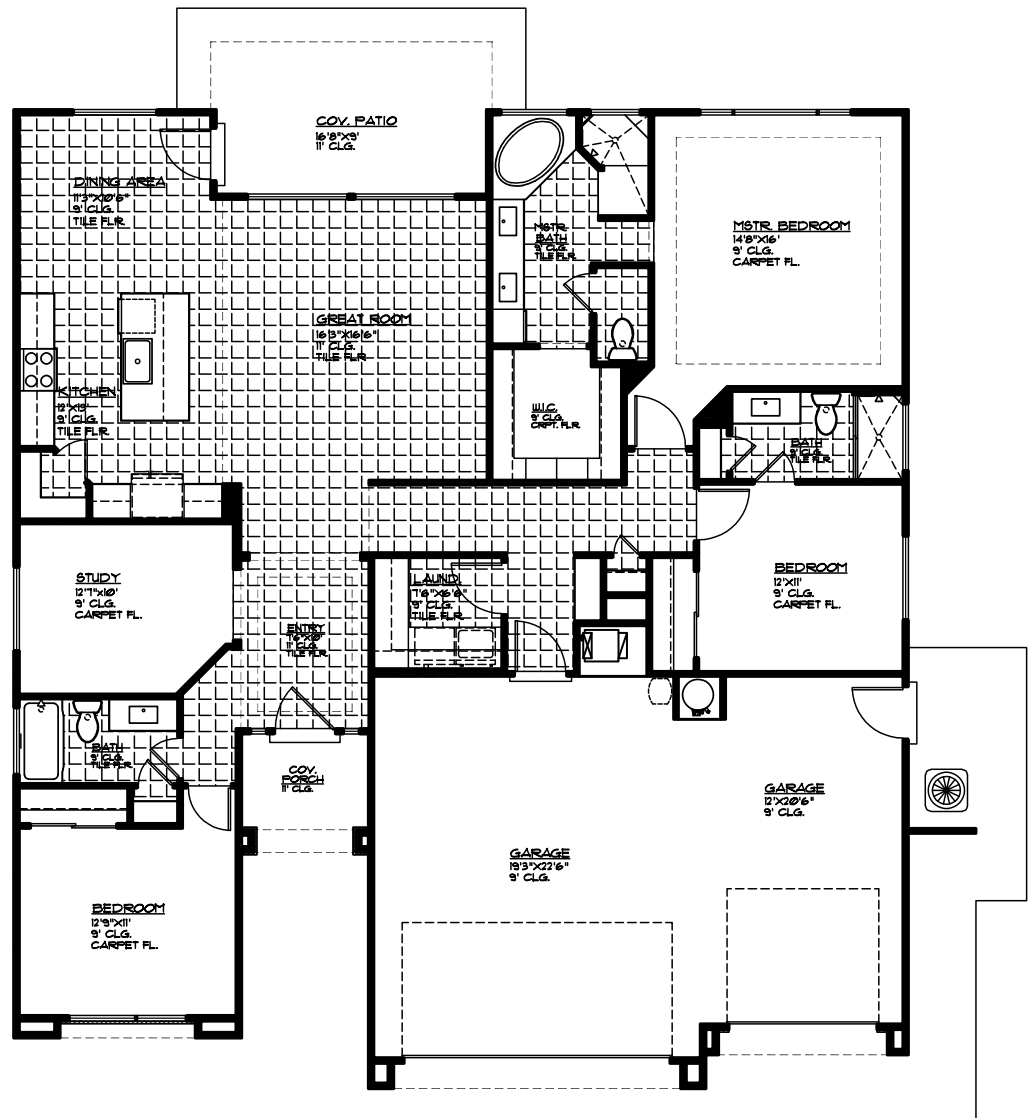
St. George, UT

2004 Square Feet  
3 Bed | 3 Bath | Study  
3 Car Garage

### CALL FOR PRICING

### INCLUDED FEATURES:

- Quartz Countertops
- Full Landscaping
- Tile Backsplash
- Three-Tone Paint
- 8' Tall Doors
- Tile Flooring
- Premium Carpet Pad
- Covered Patio
- Painted Cabinets



### MAIN FLOOR PLAN

MAIN FLOOR 2004 SQ. FT.  
GARAGE AREA 168 SQ. FT.  
COV. PORCH 53 SQ. FT.  
COV. PATIO 141 SQ. FT.

MLS #

FOR FURTHER DETAILS CONTACT: 435.216.1707

18.1157

MARKETED BY ENCE REALTY - VISIT US TODAY OR GO ONLINE AT: WWW.ENCEHOMES.COM