

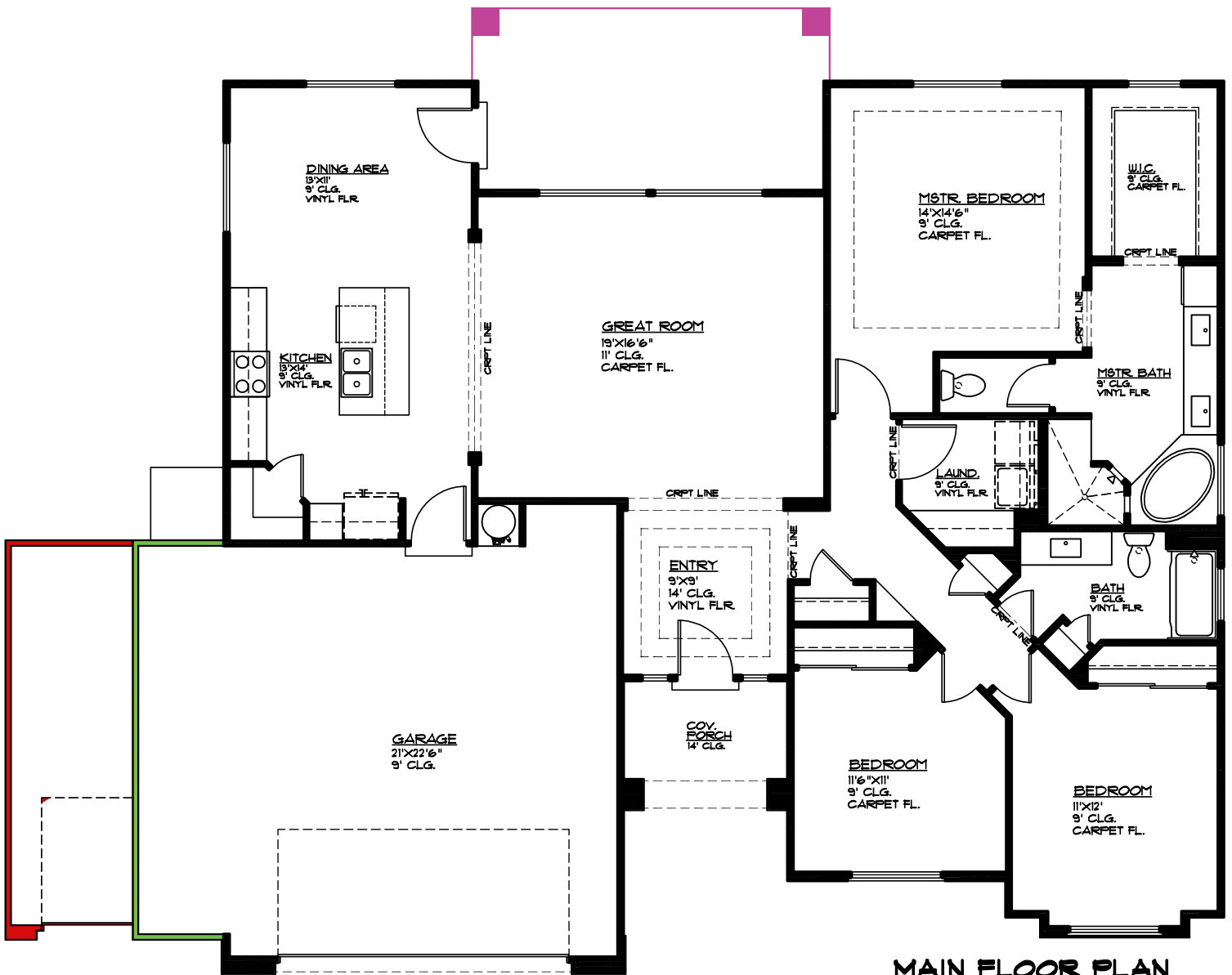


Plan 1810



3369 E. Crimson Ridge Dr.
St. George, UT
435.652.5515

Cody Ence 435.680.7700
Dan Wiarda 435.590.1260



- Covered Patio 19'8" x 4', 80 sq. ft.
- 5' Bump-out 5'x22', 110 sq. ft.
- 3rd Car Garage 12'x22', 264 sq. ft.

MAIN FLOOR PLAN

MAIN FLOOR 1810 SQ. FT.
GARAGE AREA 530 SQ. FT.
COV. PORCH 63 SQ. FT.
COV. PATIO 114 SQ. FT.
GARAGE BUMP-OUT OPT 110 SQ. FT.
3RD CAR GARAGE OPT 264 SQ. FT.
COV. PATIO OPT 80 SQ. FT.