



Plan 1810 ELEVATIONS

Aspen
ESTATES

3369 E. Crimson Ridge Dr.
St. George, UT
435.652.5515

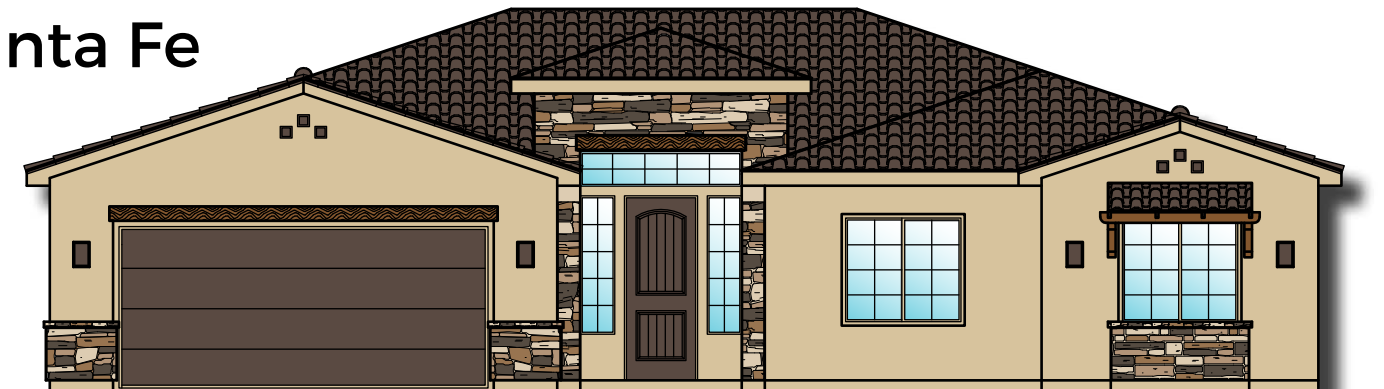
Oxford



American



Santa Fe



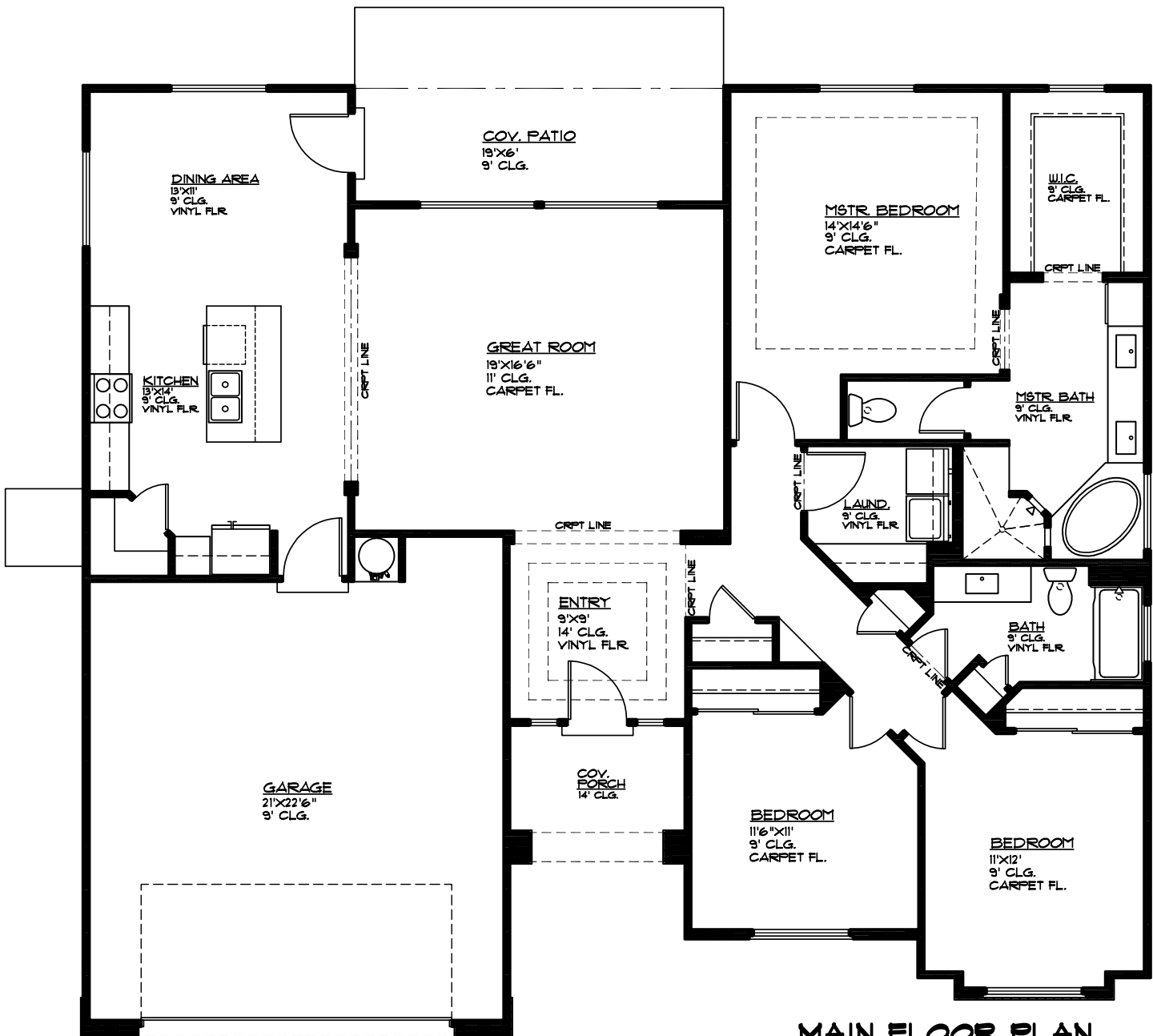


Plan 1810 FLOOR PLAN

Aspen
ESTATES

3369 E. Crimson Ridge Dr.
St. George, UT
435.652.5515

1,810 Sqft • 3 Beds • 2 Baths • 2 Garages • 55' ▶ x 49' ▲



MAIN FLOOR PLAN

MAIN FLOOR 1810 SQ. FT.
GARAGE AREA 530 SQ. FT.
COV. PORCH 63 SQ. FT.
COV. PATIO 114 SQ. FT.