

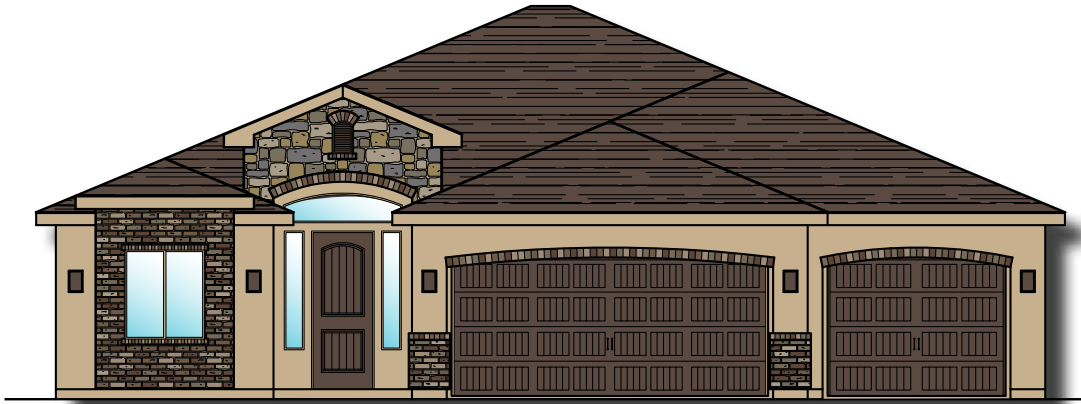


# Plan 1872 ELEVATIONS

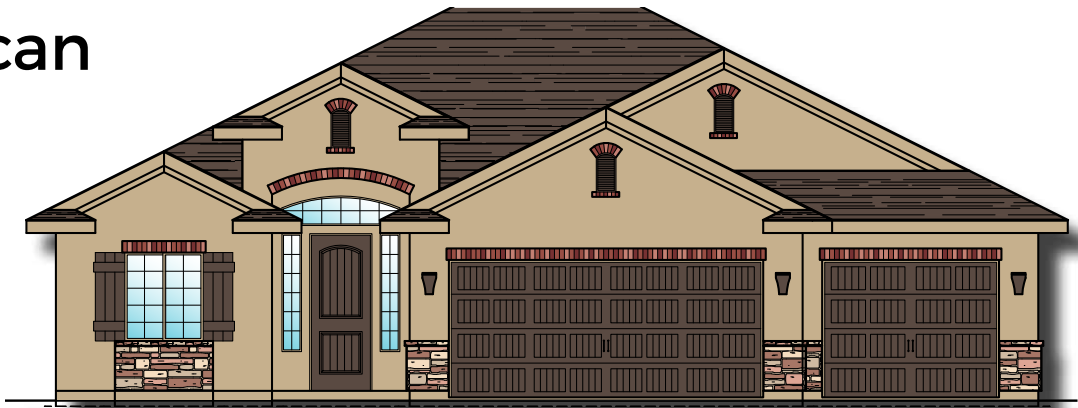
Aspen  
ESTATES

3369 E. Crimson Ridge Dr.  
St. George, UT  
435.652.5515

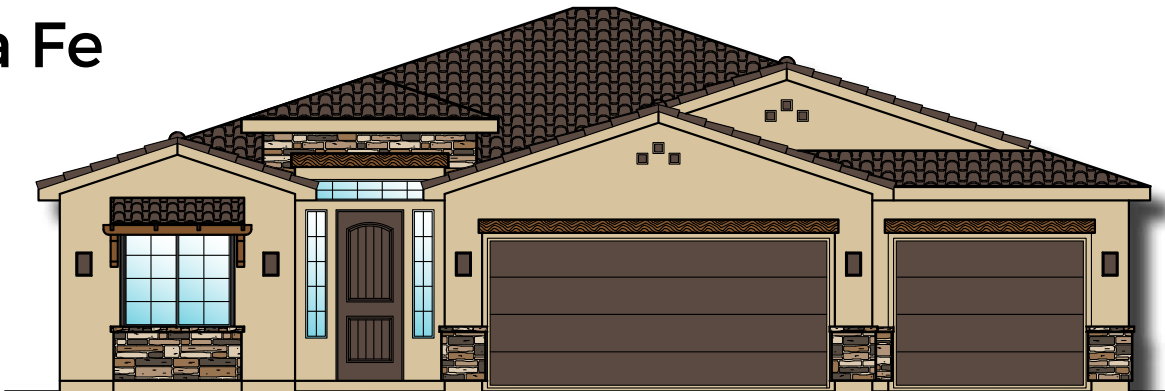
## Oxford



## American



## Santa Fe



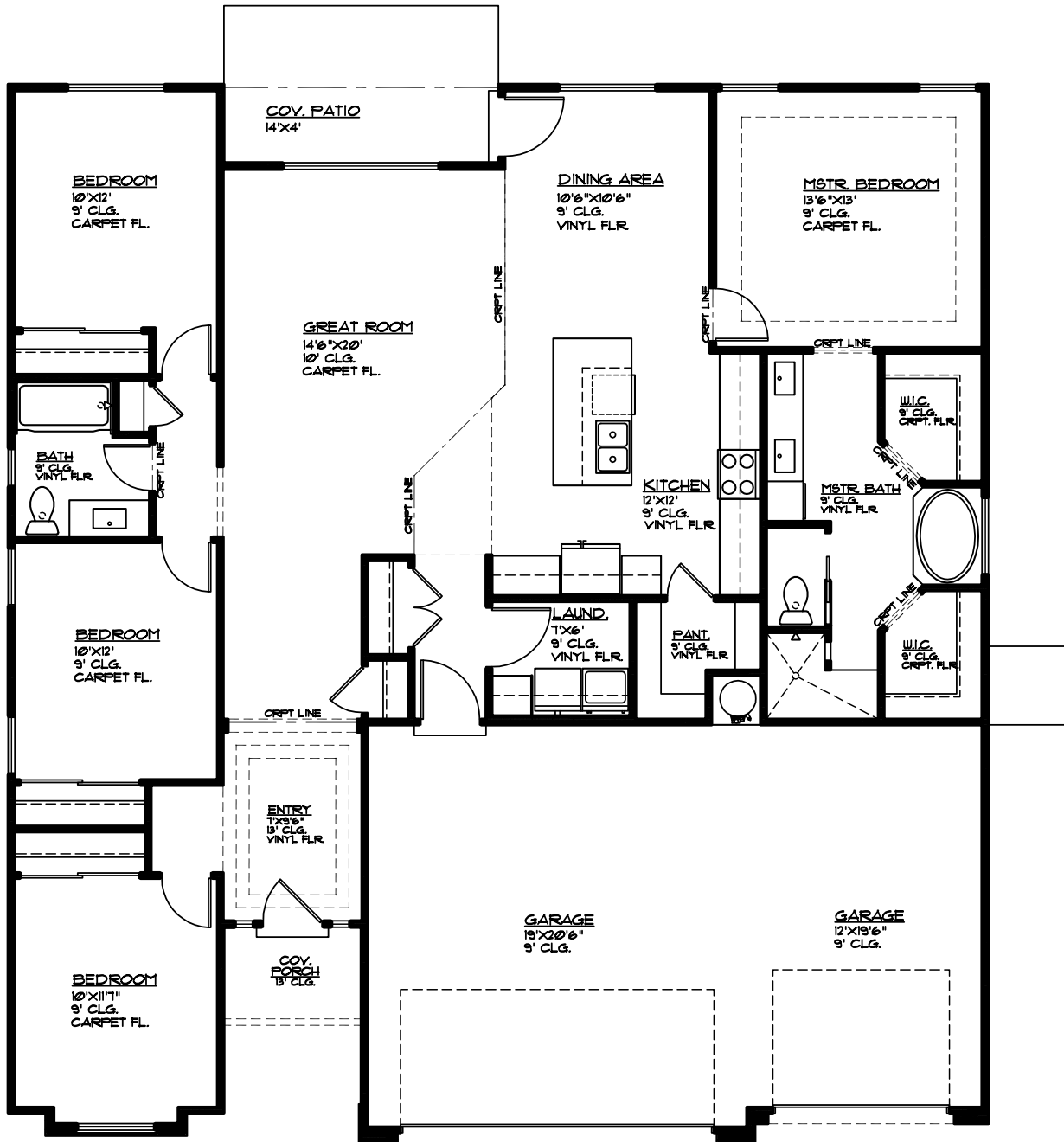


# Plan 1872 FLOOR PLAN

Aspen  
ESTATES

3369 E. Crimson Ridge Dr.  
St. George, UT  
435.652.5515

1,872 Sqft • 4 Beds • 2 Baths • 3 Garages • 50' ▶ x 54' ▲



## MAIN FLOOR PLAN

MAIN FLOOR 1872 SQ. FT.  
GARAGE AREA 673 SQ. FT.  
COV. PORCH 35 SQ. FT.  
COV. PATIO 56 SQ. FT.