

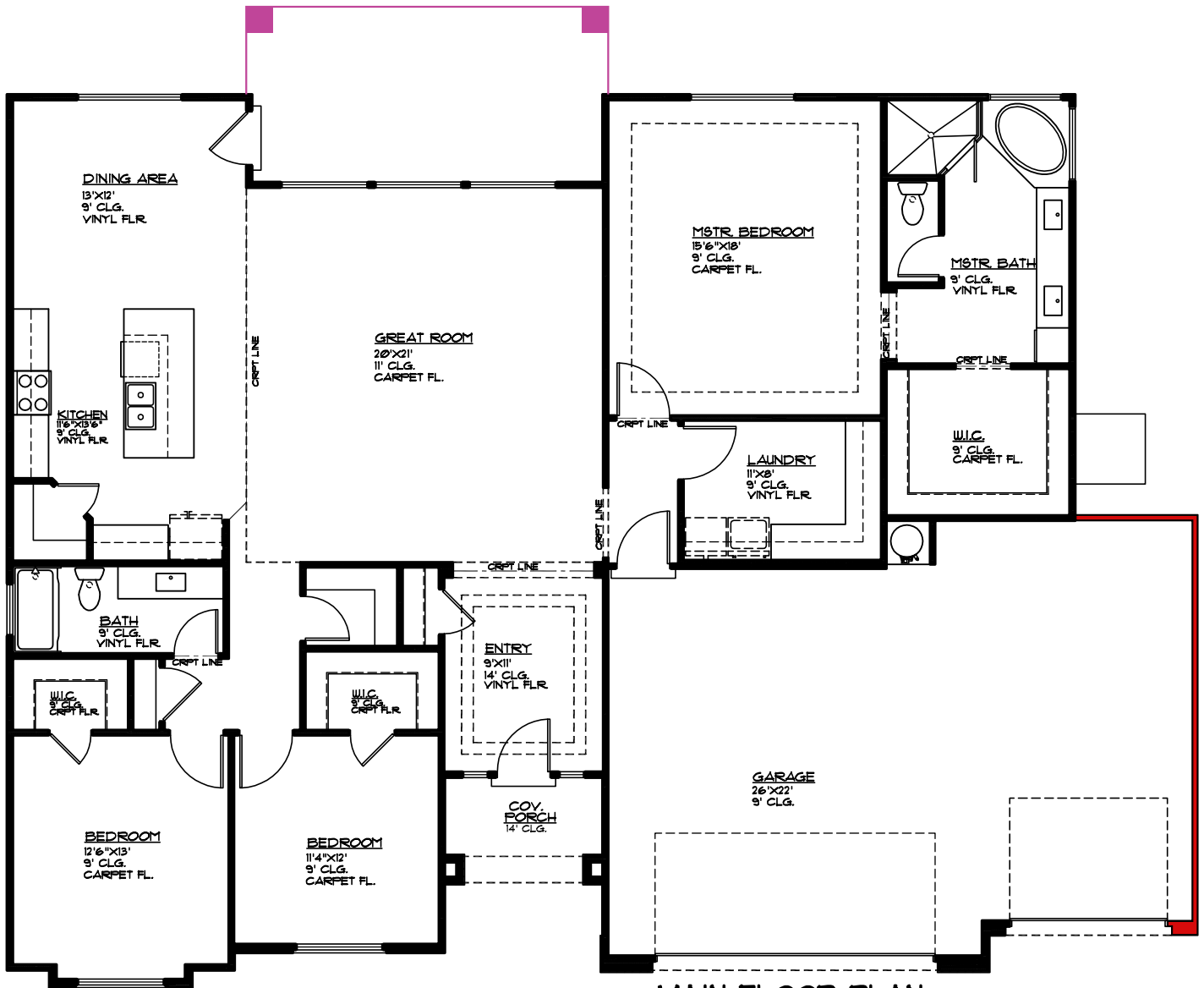


# Plan 2200



3369 E. Crimson Ridge Dr.  
St. George, UT  
435.652.5515

Cody Ence 435.680.7700  
Dan Wiarda 435.590.1260



- Covered Patio 20'8" x 5', 100 sq. ft.
- 3rd Car Garage 7'x24', 160 sq. ft.

### MAIN FLOOR PLAN

MAIN FLOOR - 2200 SQ. FT.  
GARAGE AREA - 630 SQ. FT.  
COV PORCH - 54 SQ. FT.  
COV PATIO - 100 SQ. FT.  
3 CAR GARAGE OPT 160 SQ. FT.  
COV. PATIO OPT 104 SQ. FT.