



Plan 2200 ELEVATIONS

Aspen
ESTATES

3369 E. Crimson Ridge Dr.
St. George, UT
435.652.5515

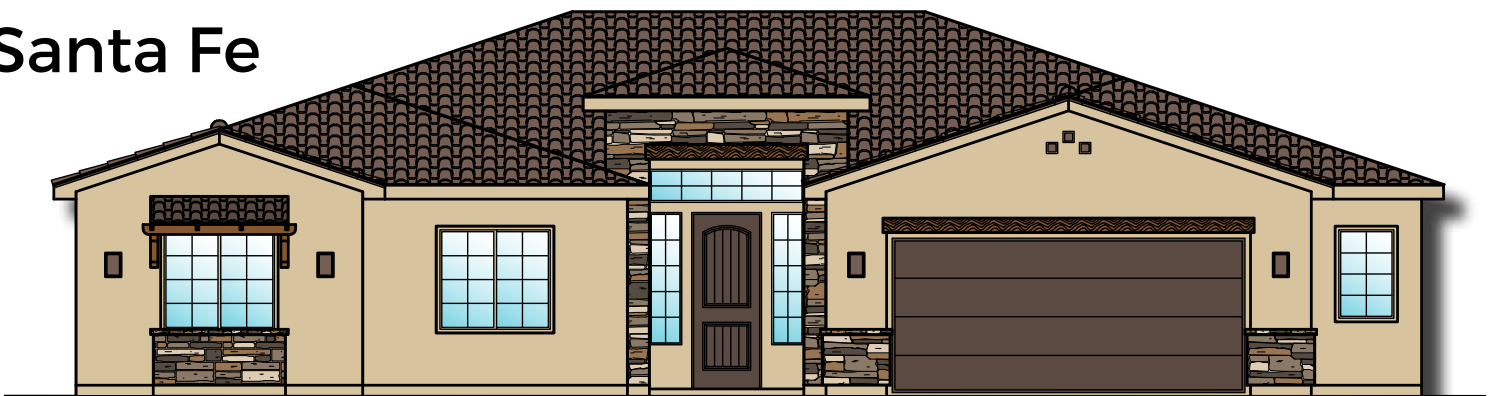
Oxford



American



Santa Fe



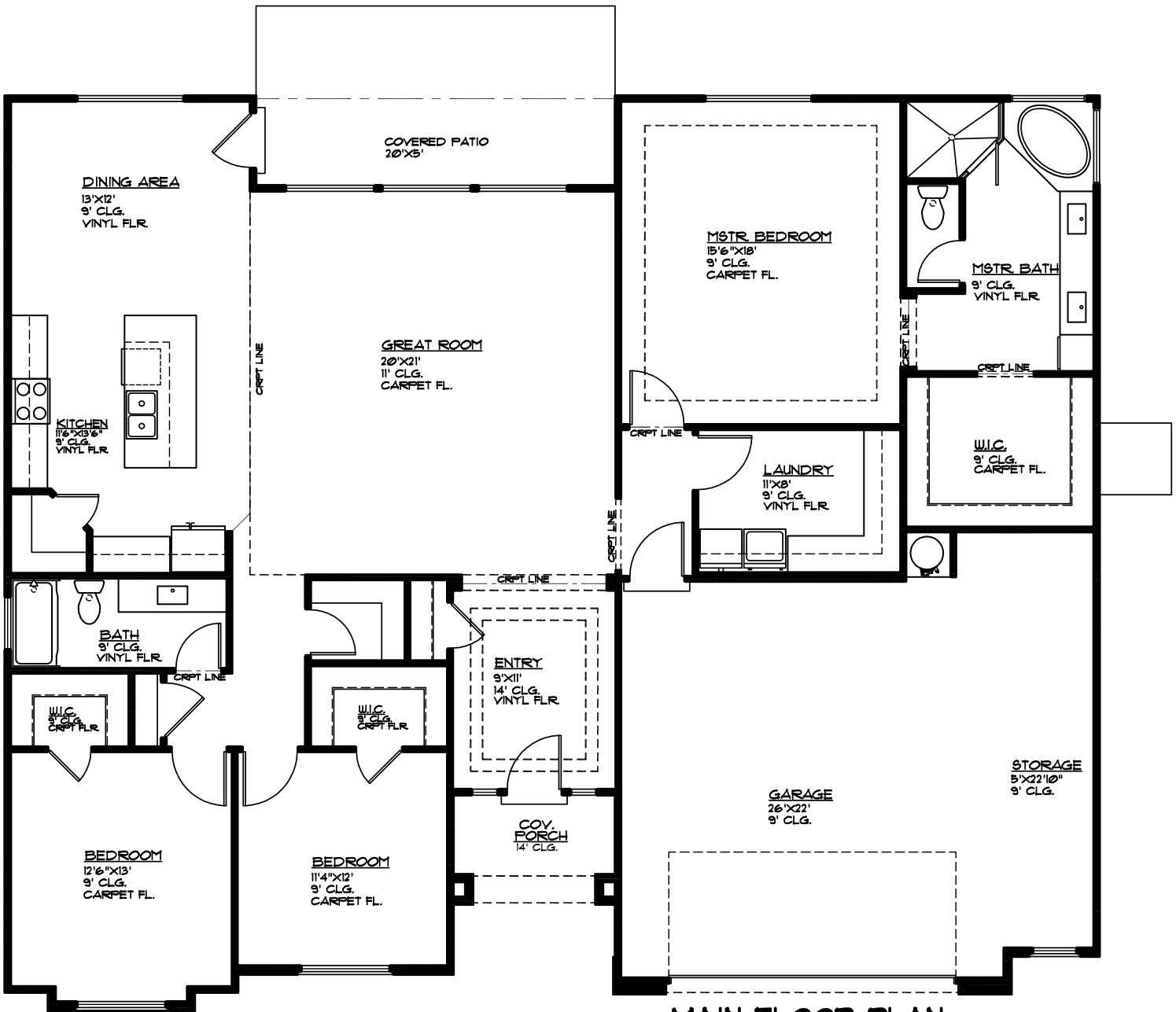


Plan 2200 FLOOR PLAN

Aspen
ESTATES

3369 E. Crimson Ridge Dr.
St. George, UT
435.652.5515

2,200 Sqft • 3 Beds • 2 Baths • 2 Garages • 61' ► x 51' ▲



MAIN FLOOR PLAN

MAIN FLOOR - 2200 SQ. FT.
GARAGE AREA - 630 SQ. FT.
COV PORCH - 54 SQ. FT.
COV PATIO - 100 SQ. FT.