

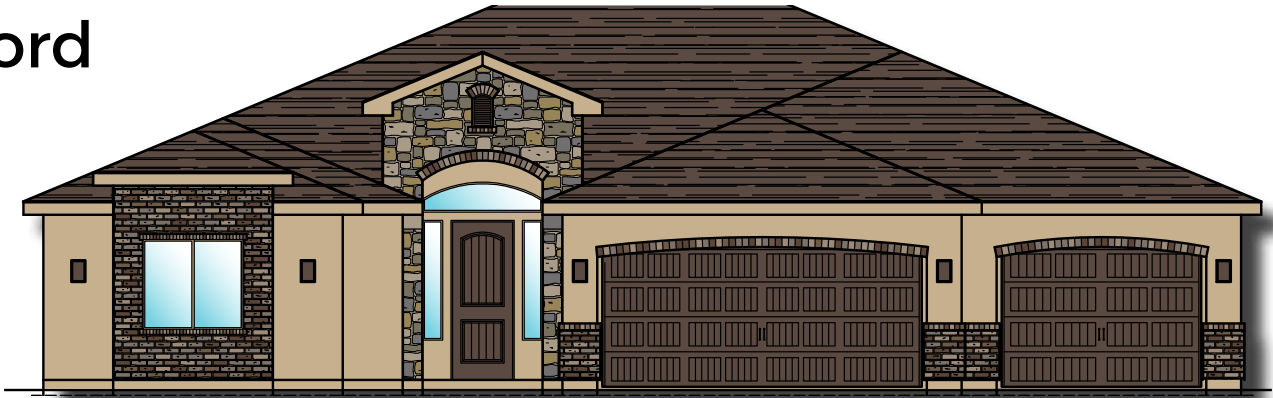


Plan 2592 ELEVATIONS

Aspen
ESTATES

3369 E. Crimson Ridge Dr.
St. George, UT
435.652.5515

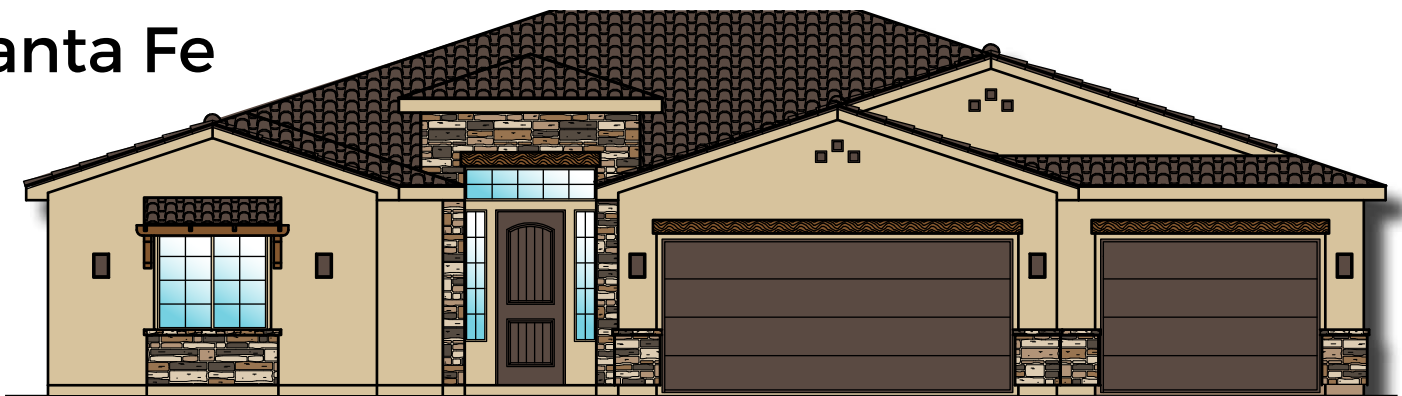
Oxford



American



Santa Fe



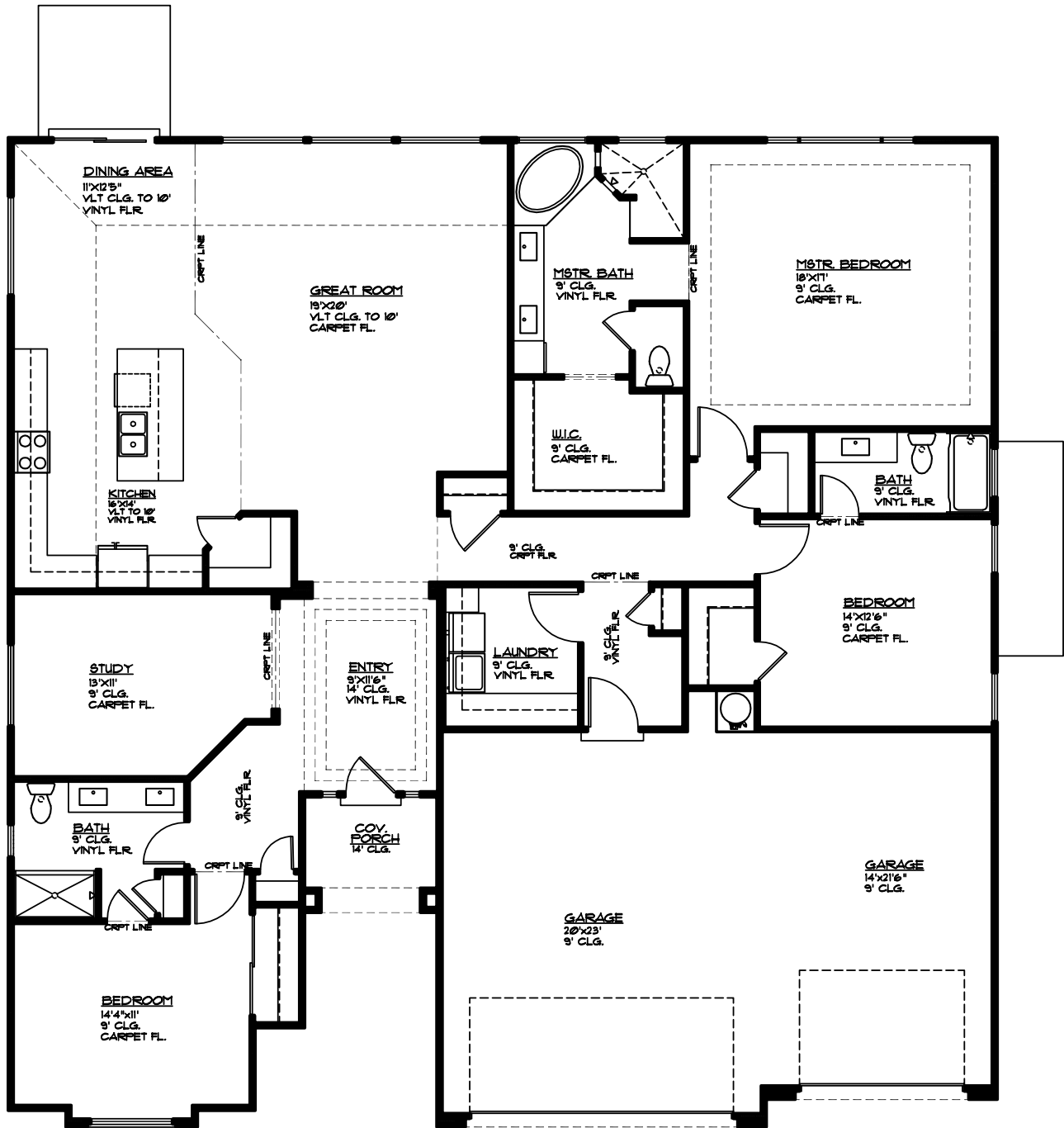


Plan 2592 FLOOR PLAN

Aspen
ESTATES

3369 E. Crimson Ridge Dr.
St. George, UT
435.652.5515

2,592 Sqft • 4 Beds • 3 Baths • 3 Garages • 60' ► x 60' ▲



MAIN FLOOR PLAN

MAIN FLOOR = 2592 SQ. FT.
GARAGE AREA = 800 SQ. FT.
COV. PORCH = 55 SQ. FT.