

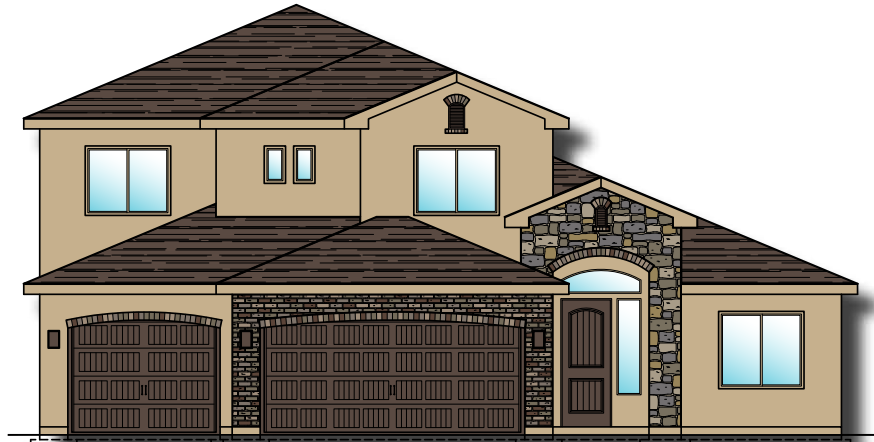


# Plan 3300 ELEVATIONS

Aspen  
ESTATES

3369 E. Crimson Ridge Dr.  
St. George, UT  
435.652.5515

## Oxford



## American



## Santa Fe



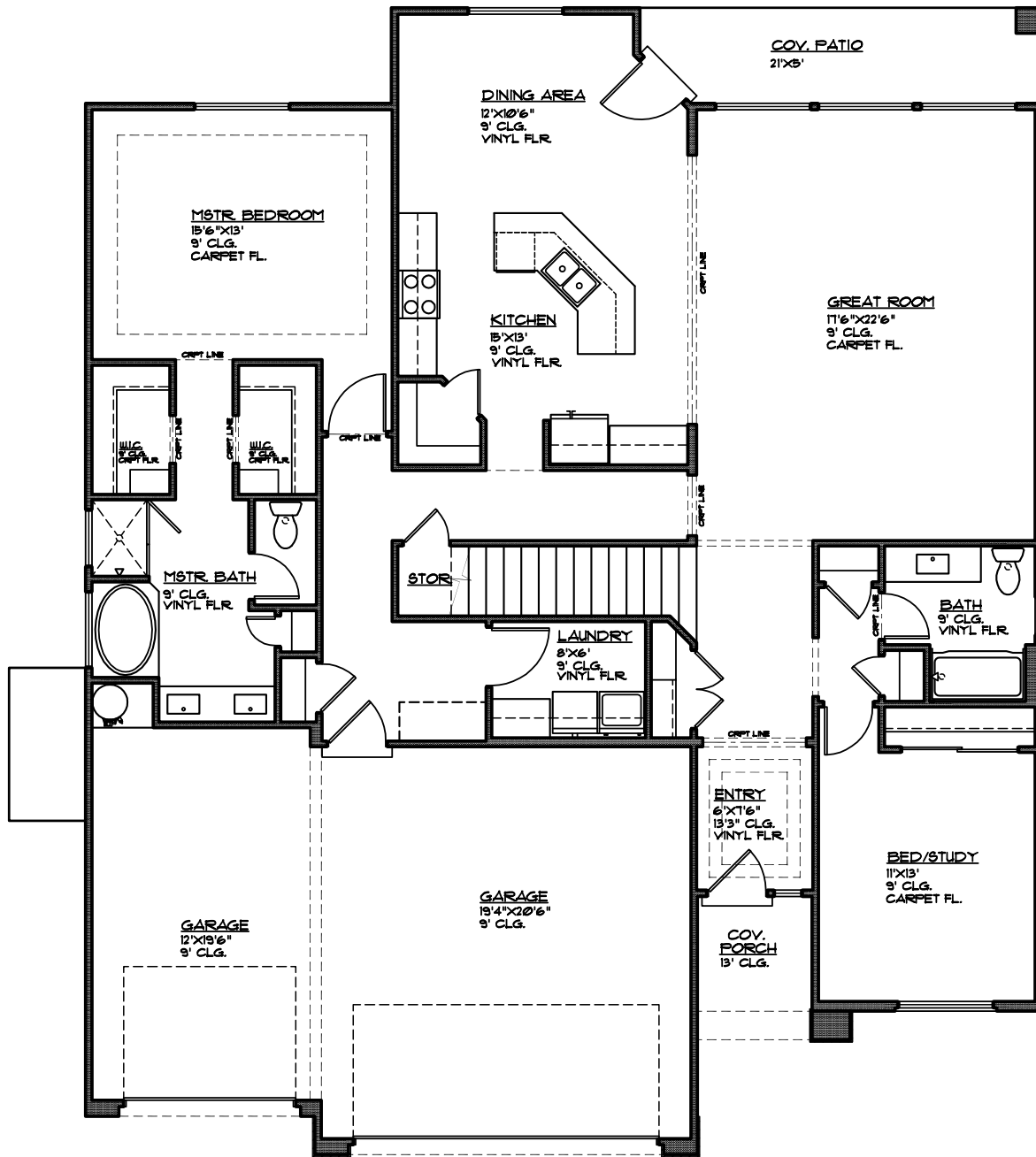


# Plan 3300 FLOOR PLAN

Aspen  
ESTATES

3369 E. Crimson Ridge Dr.  
St. George, UT  
435.652.5515

3,330 Sqft • 6 Beds • 4 Baths • 3 Garages • 50' ► x 60' ▲



## MAIN FLOOR PLAN

MAIN FLOOR - 1944 SQ. FT.  
GARAGE AREA - 680 SQ. FT.  
COV. PORCH - 45 SQ. FT.  
COV. PATIO - 101 SQ. FT.

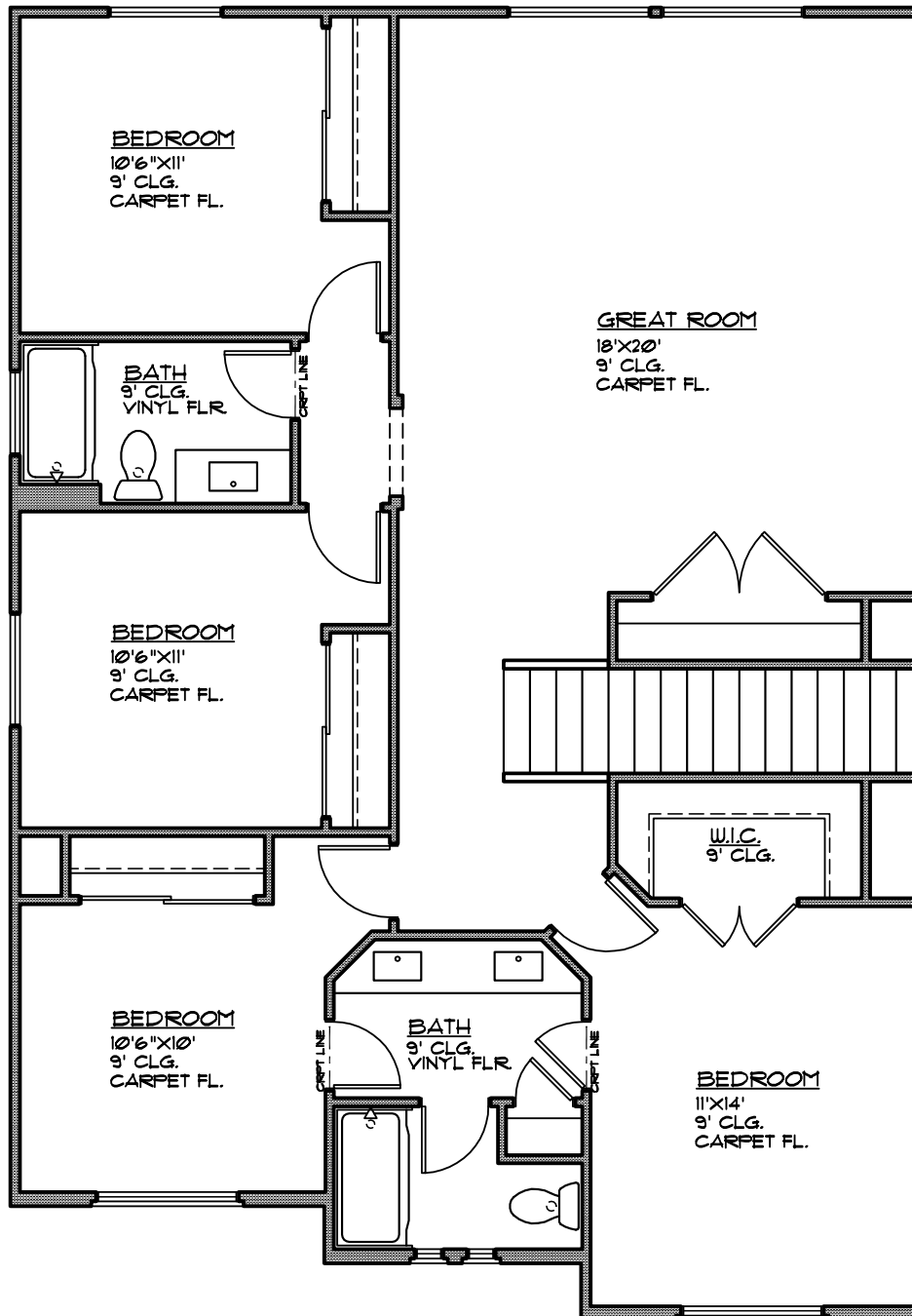


# Plan 3300 FLOOR PLAN

Aspen  
ESTATES

3369 E. Crimson Ridge Dr.  
St. George, UT  
435.652.5515

3,330 Sqft • 6 Beds • 4 Baths • 3 Garages • 50' ► x 60' ▲



## UPPER FLOOR PLAN

UPPER FLOOR - 1356 SQ. FT.