



# UNDER CONSTRUCTION MOVE-IN READY



**POCKET MESA**

**Lot #31**

## HOMES LOCATED AT:

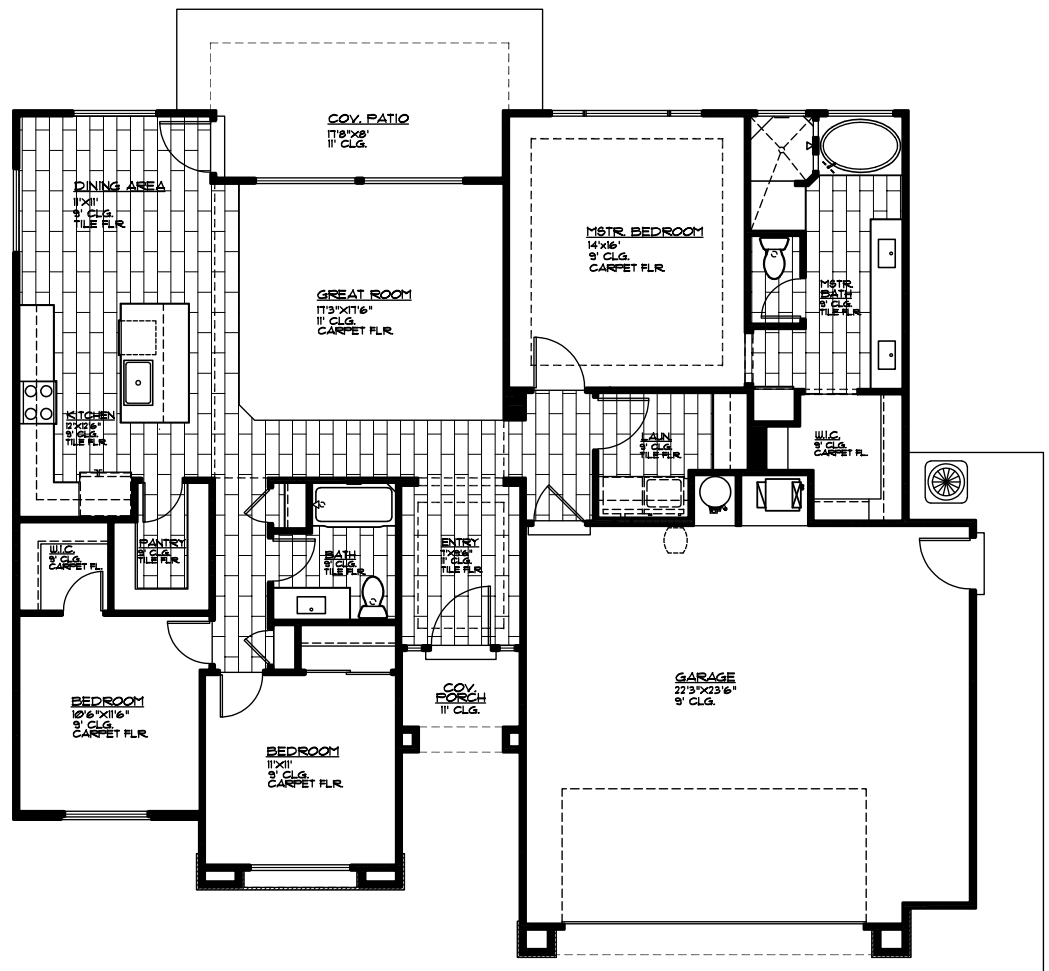
Firepit Knoll Dr.  
St. George, UT

1725 Square Feet  
3 Bed | 2 Bath  
2 Car Garage

## CALL FOR PRICING

## INCLUDED FEATURES:

- Granite Countertops
- Premium Carpet Pad
- Full Landscaping
- Tile Backsplash
- Three-Tone Paint
- 8' Tall Doors
- Tile Flooring
- Covered Patio
- Under Cabinet Lighting



### MAIN FLOOR PLAN

MAIN FLOOR = 1725 SQ. FT.  
GARAGE AREA = 634 SQ. FT.  
COV. PATIO = 72 SQ. FT.  
COV. PORCH = 42 SQ. FT.

MLS # 19-209347

**FOR FURTHER DETAILS CONTACT: Ed Hills 435.272.2726 Greg Smith 801.718.1157**

MARKETED BY ENCE REALTY - VISIT US TODAY OR GO ONLINE AT: [WWW.ENCEHOMES.COM](http://WWW.ENCEHOMES.COM)