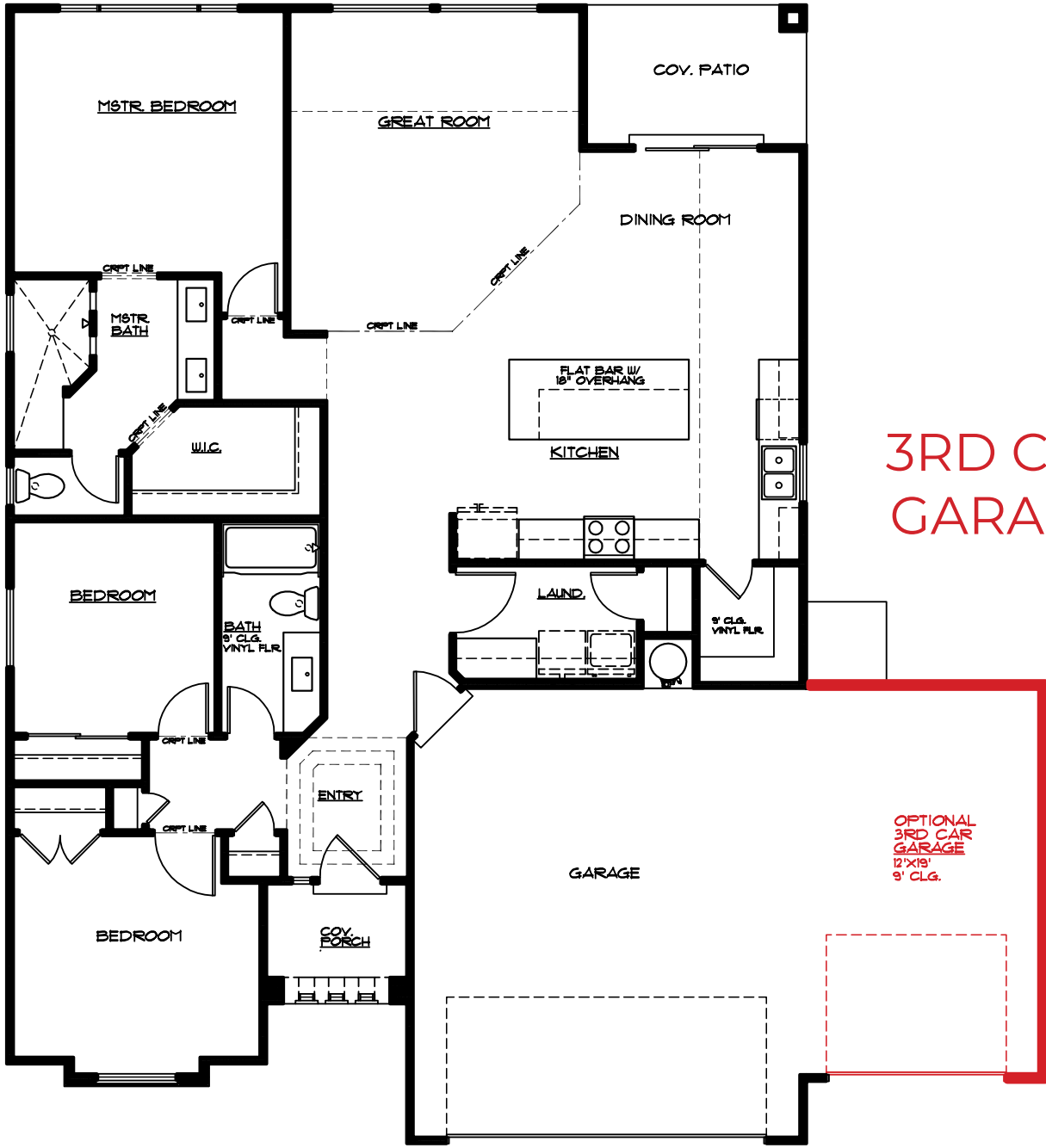




Plan 1590 OPTIONS



2866 S Varano Way
St. George, UT
435.216.1220



3RD CAR
GARAGE

OPTIONAL
3RD CAR
GARAGE
12'X19'
9' CLG.

MAIN FLOOR PLAN

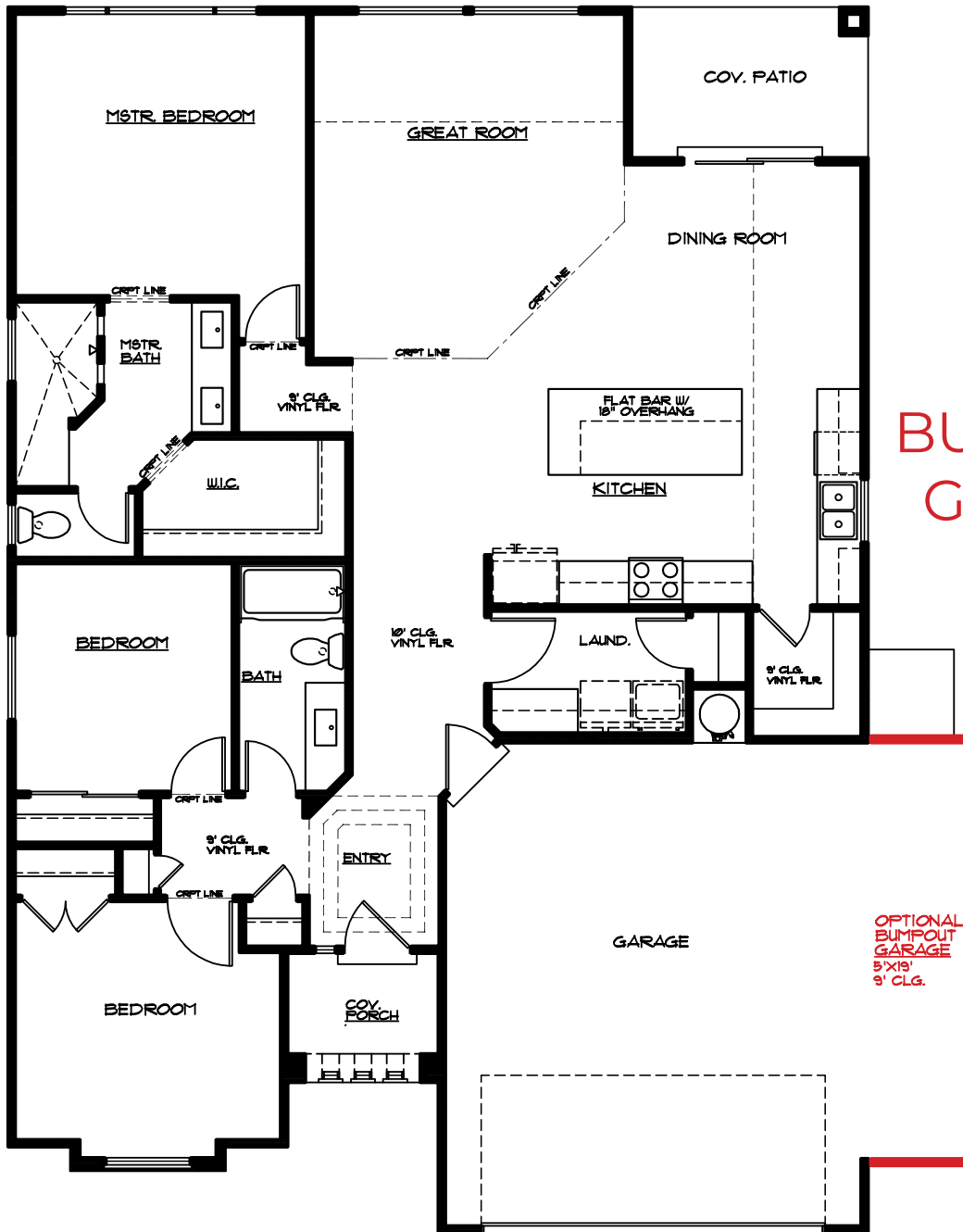
Floor plan may vary depending on elevation and location



Plan 1590 OPTIONS



2866 S Varano Way
St. George, UT
435.216.1220



**BUMPOUT
GARAGE**

**OPTIONAL
BUMPOUT
GARAGE
5'X13'
9' CLG.**

MAIN FLOOR PLAN

Floor plan may vary depending on elevation and location