



# Plan 2114 OPTIONS



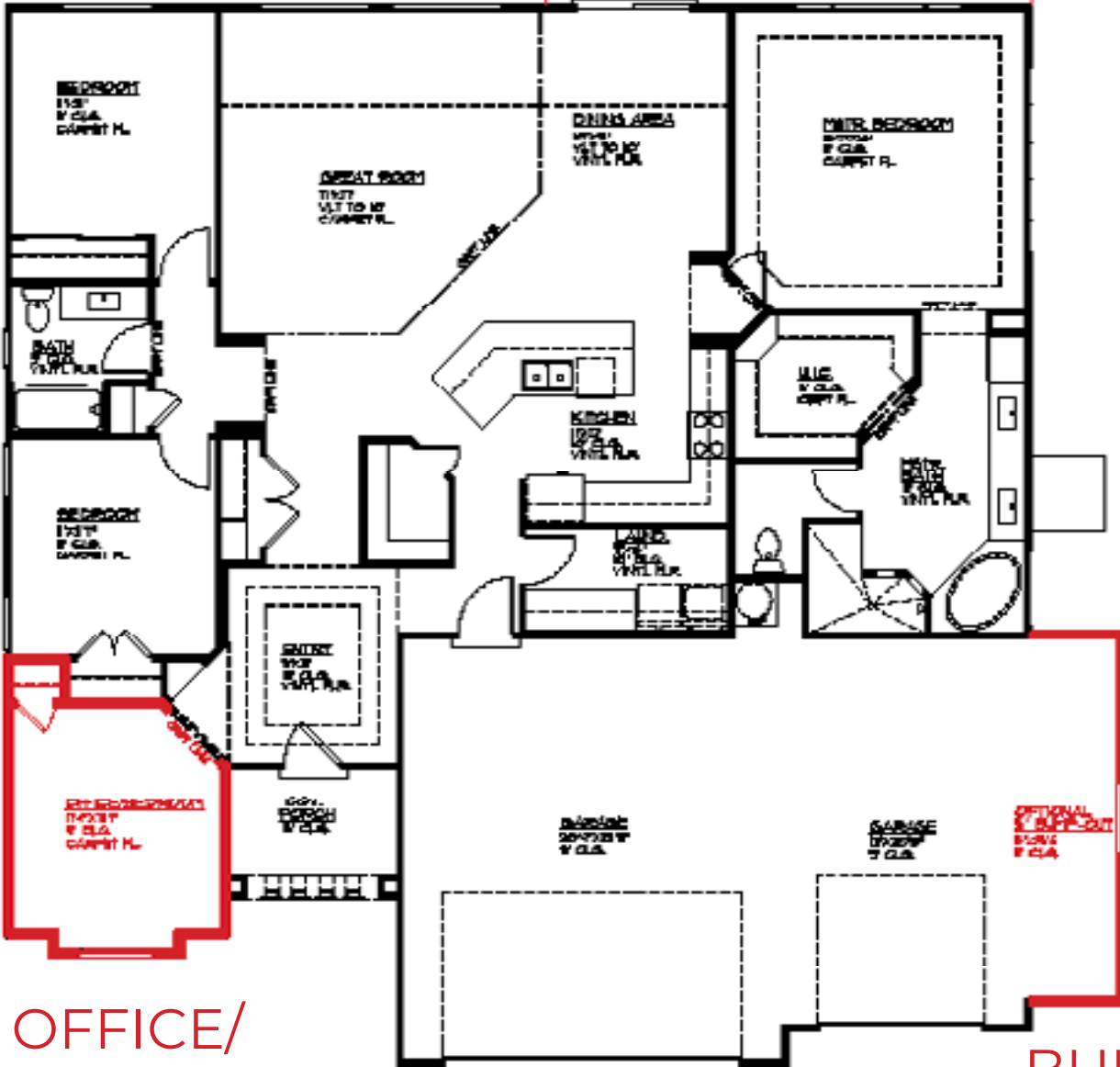
2866 S Varano Way  
St. George, UT  
435.216.1220

Cody Ence 435.680.7700  
Connor Calaway 435.619.9281  
Shane Calder 435.703.5454

0

COVERED  
PATIO

OPTIONAL  
COV. PATIO  
34'x50'



OFFICE/  
BEDROOM

BUMP-OUT  
GARAGE

**MAIN FLOOR PLAN**  
TOTAL FLOOR AREA = 2044 SQ. FT.  
GARAGE AREA = 288 SQ. FT.  
TOTAL AREA = 2332 SQ. FT.