

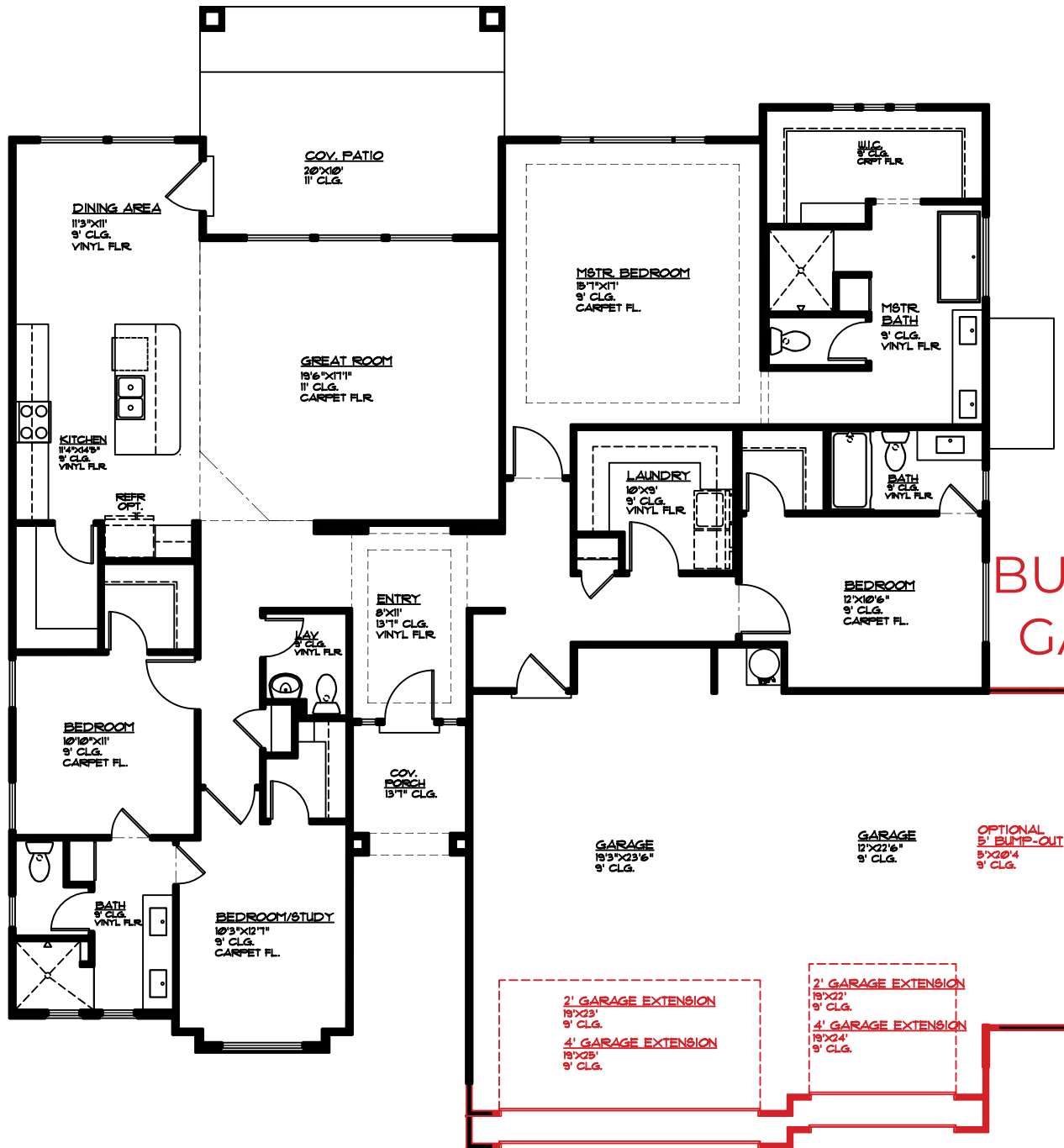


# Plan 2384 OPTIONS



2866 S Varano Way  
St. George, UT  
435.216.1220

Cody Ence 435.680.7700  
Connor Calaway 435.619.9281  
Shane Calder 435.703.5454



**BUMP-OUT  
GARAGE**

**GARAGE  
EXTENSIONS**

## MAIN FLOOR PLAN

MAIN FLOOR - 2384 SQ. FT.  
GARAGE AREA - 788 SQ. FT.  
5' GARAGE BUMP-OUT 105 SQ. FT.  
2' GARAGE EXTENSION 64 SQ. FT.  
4' GARAGE EXTENSION 128 SQ. FT.