

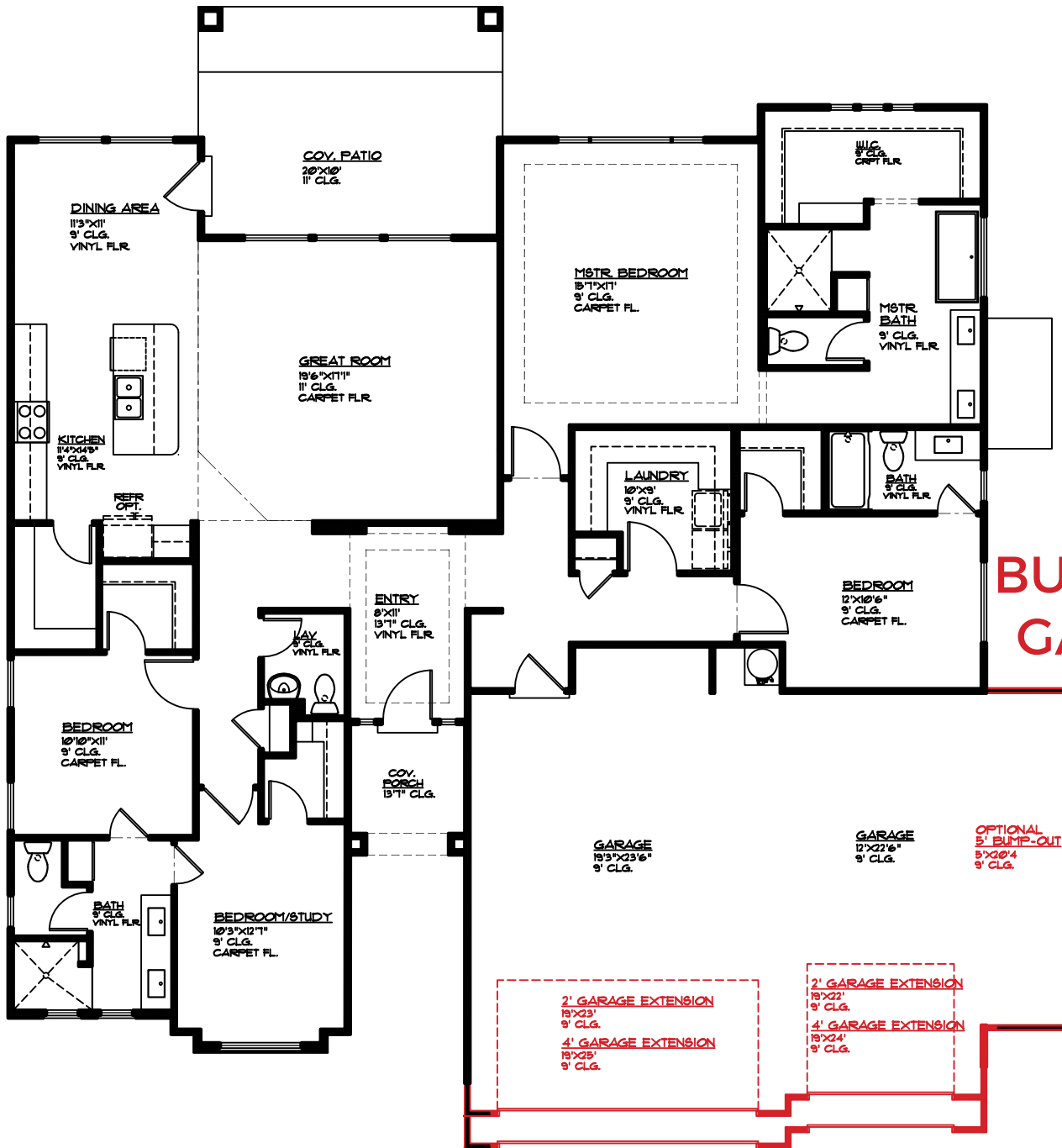


Plan 2384 OPTIONS



2866 S Varano Way
St. George, UT
435.216.1220

Cody Ence 435.680.7700
Brady Palmer 801.318.5060



**BUMP-OUT
GARAGE**

**GARAGE
EXTENSIONS**

MAIN FLOOR PLAN

MAIN FLOOR - 2384 SQ. FT.
GARAGE AREA - 788 SQ. FT.
5' GARAGE BUMP-OUT 105 SQ. FT.
2' GARAGE EXTENSION 64 SQ. FT.
4' GARAGE EXTENSION 128 SQ. FT.