



UNDER CONSTRUCTION QUICK MOVE-IN



HOMES LOCATED AT:

Lot #48
Arvo Lane
St. George, Utah 84770



\$445,500

2004 SQUARE FEET

Prairie

4 Bed | 3 Bath | 3 Car Garage

INCLUDED FEATURES:

- Upgraded kitchen backsplash
- Granite counter top
- Premium carpet pad
- Full landscaping
- Gas cook top
- Upgraded two-tone paint
- Colonial style cabinets

MLS # 20-

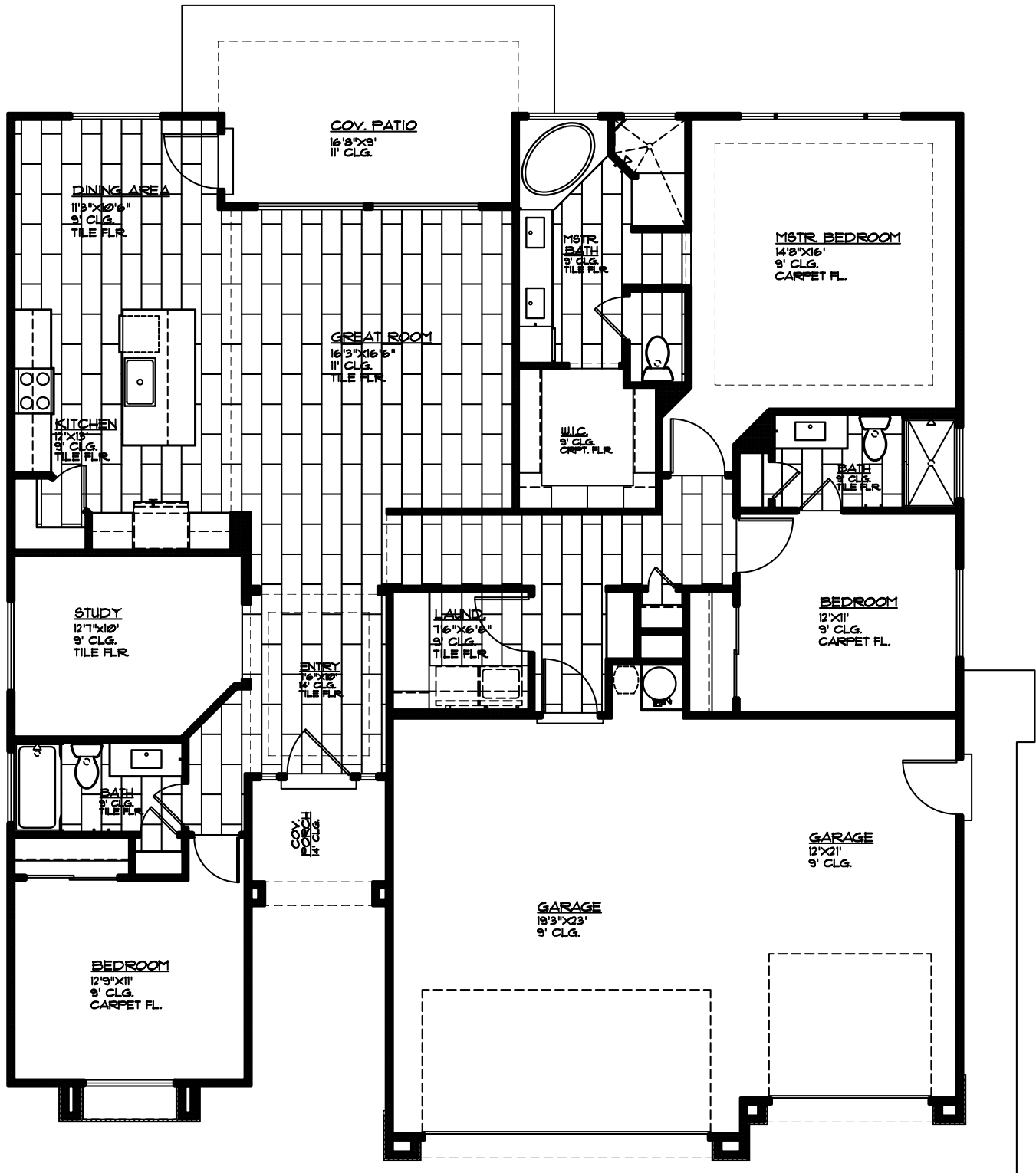
FOR FURTHER DETAILS CONTACT:

Cody Ence 435.680.7700 Brady Palmer 801.318.5060 Don Leavitt 435.669.2022

MARKETED BY ENCE REALTY - VISIT US TODAY OR GO ONLINE AT: WWW.ENCEHOMES.COM



UNDER CONSTRUCTION QUICK MOVE-IN



MAIN FLOOR PLAN

MAIN FLOOR 2004 SQ. FT.
GARAGE AREA 168 SQ. FT.
COV. PORCH 53 SQ. FT.
COV. PATIO 141 SQ. FT.