



Plan 1758 ELEVATIONS



498 S. Deep Creek
Dr. Washington, Utah
84790



Arbor



Bamboo



Willow



Hawthorne

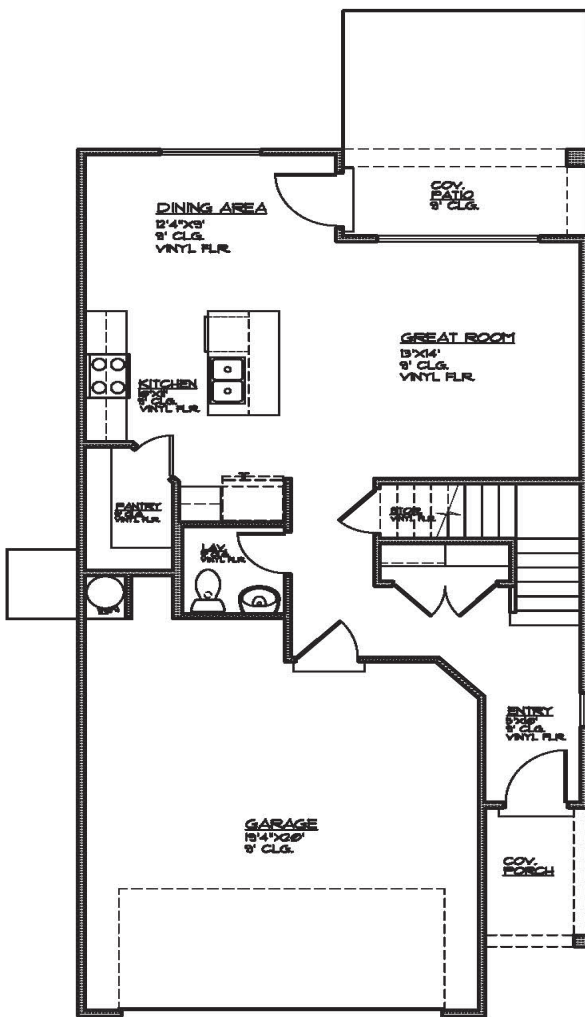


Plan 1758 FLOOR PLAN

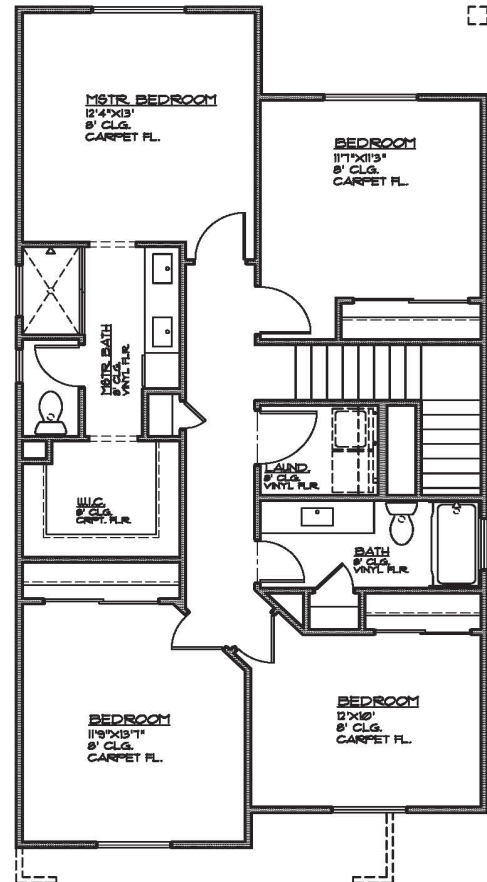


498 S. Deep Creek
Dr. Washington, Utah
84790

1758 Sqft • 4 Beds • 2.5 Baths • 2 Garages • 25' ► x 50' ▲



MAIN FLOOR PLAN
 MAIN FLOOR - 630 SQ. FT.
 GARAGE AREA - 440 SQ. FT.
 COV. PORCH - 40 SQ. FT.
 COV. PATIO - 60 SQ. FT.



UPPER FLOOR PLAN
 UPPER FLOOR - 1068 SQ. FT.