



# Plan 1530 ELEVATIONS



498 S. Deep Creek  
Dr. Washington, Utah  
84790



Arbor



Bamboo



Willow



Hawthorne

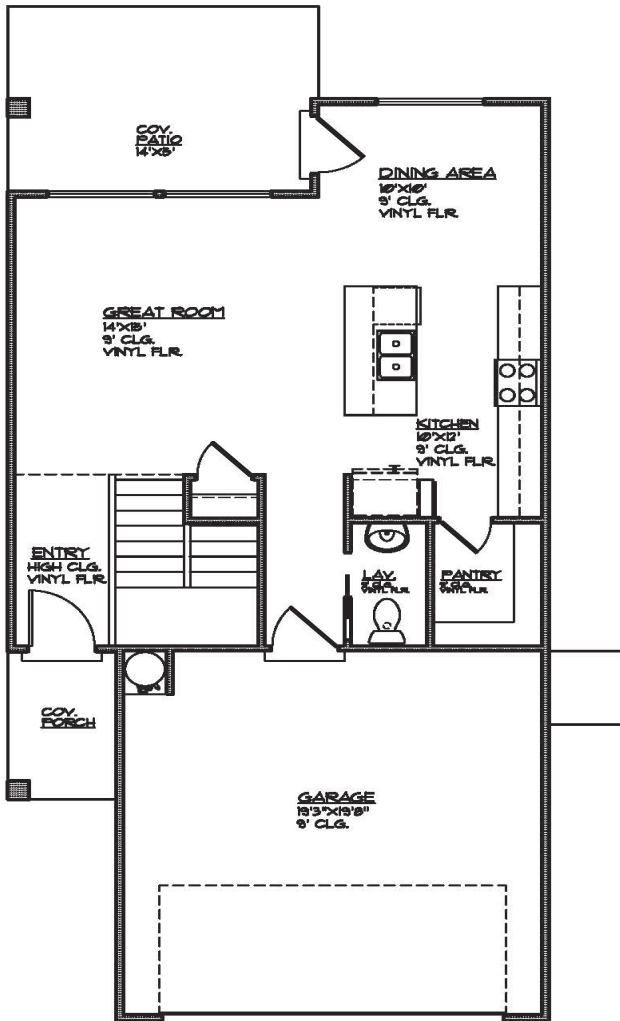


# Plan 1530 FLOOR PLAN



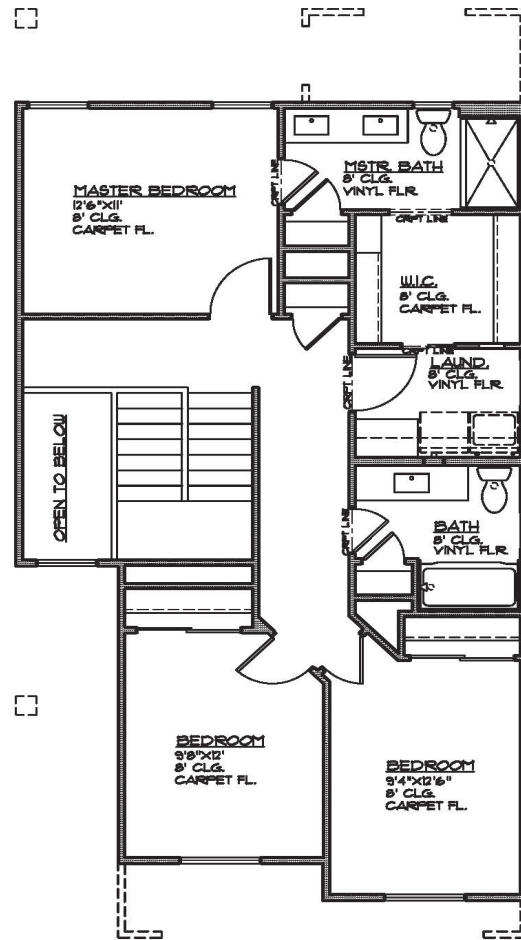
498 S. Deep Creek  
Dr. Washington, Utah  
84790

1530 Sqft • 3 Beds • 2.5 Baths • 2 Garages • 25' ▶ x 50' ▲



### MAIN FLOOR PLAN

MAIN FLOOR - 670 SQ. FT.  
GARAGE AREA - 410 SQ. FT.  
COV. PORCH - 40 SQ. FT.  
COV. PATIO - 10 SQ. FT.



### UPPER FLOOR PLAN

UPPER FLOOR - 858 SQ. FT.